

Ceantar Beardasach na Gleannta

Crinniú Eolais Pobal

An tSean Bheairic, An Fál Carrach

22ú Aibreán 2026



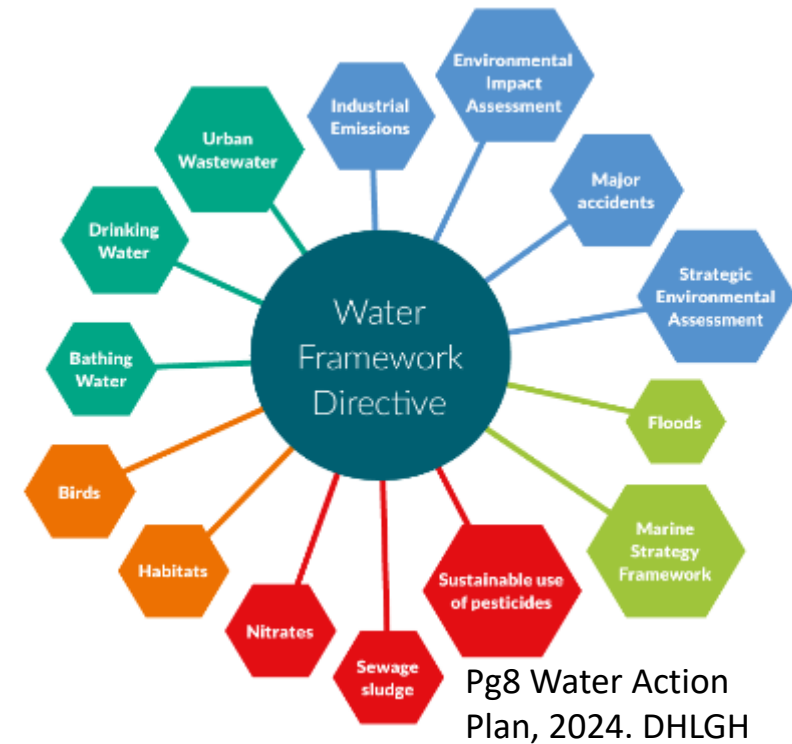
Co-funded by
the European Union

Waters of **LIFE**

About LAWPRO

LAWPRO's three core functions:

- 1. Coordination** on behalf of local authorities and public bodies.
 - *Regional Committees (incl. cross-border representation).*
 - *Nationwide Catchment Management Plan Template*
- 2. Catchment science and management** to inform decision making:
 - *Working in Priority Areas for Action (PAA)*
 - *Building capacity within Local Authority sector through knowledge sharing and training.*
- 3. Community engagement** at a local level and nationwide.
Advocating for a healthy water environment to deliver multiple benefits for health and wellbeing, biodiversity, climate, and local communities.



“Water is not a commercial product like any other but, rather, a heritage which must be protected, defended and treated as such”
WFD, 2000/60/EC

Meeting structure

- Presentation
 - Patsy Ryan – Catchment Scientist LAWPRO
 - Shaun Roarty – ASSAP Advisor Teagasc
 - Trish Murphy – ACRES Donegal
 - Lisa McDaniel – Community Water Officer LAWPRO
- Questions and Answers
 - 10 - 20 minutes
- Stand Engagement
 - 30 - 60 minutes
- We have a **sign-up** sheet at the LAWPRO table if you want to be kept up to date with our work e.g. newsletter

What do we mean by water quality?

EU Water Framework Directive

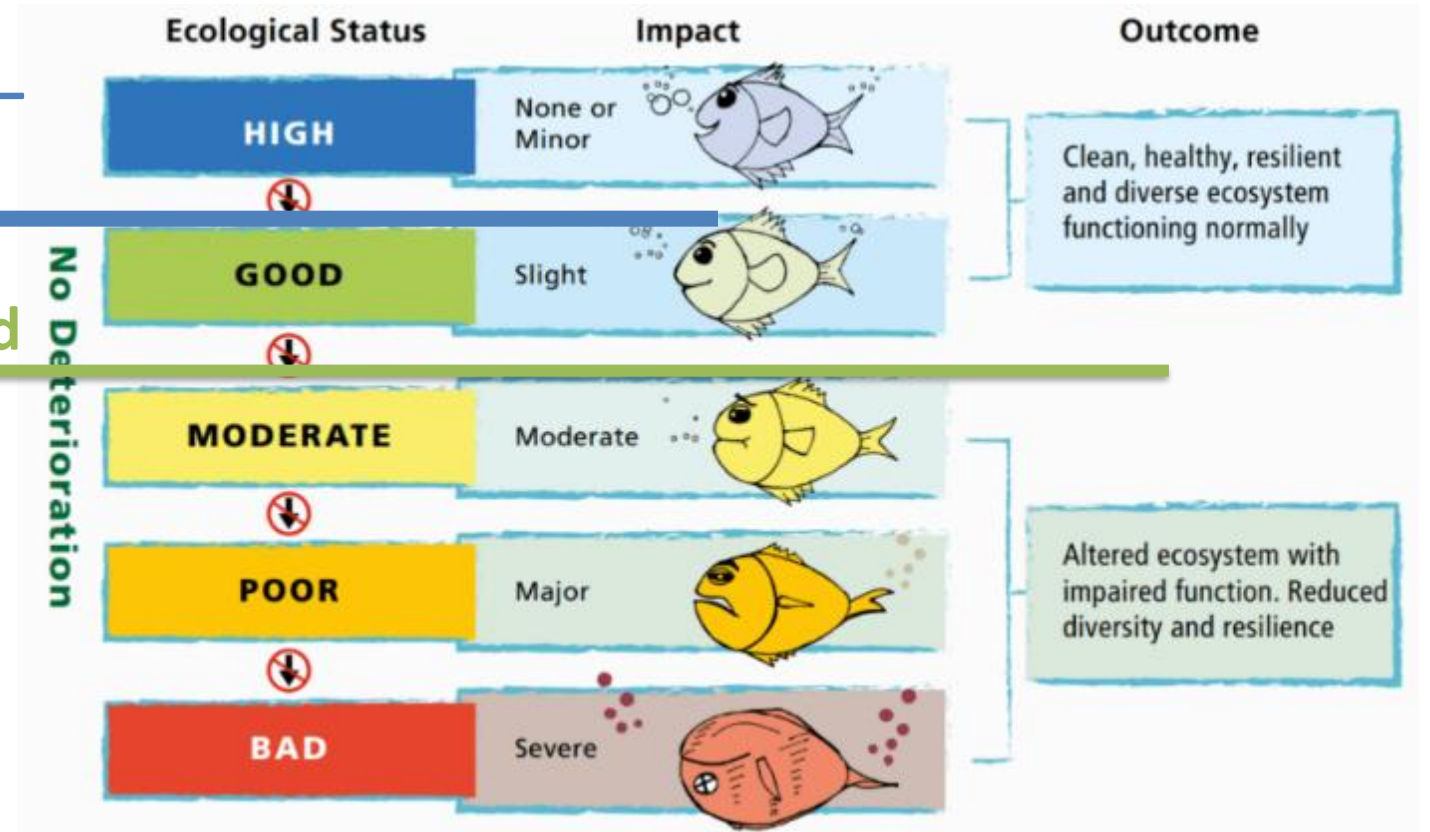
5 Leibhéal Éiceolaíoch
 &
 Tionchar ar an
 timpeallacht

3 measúnú i gcomhar stádas

- Éiceolaíoch
- Fisiceach-ceimiceach
- Cainníochtúil

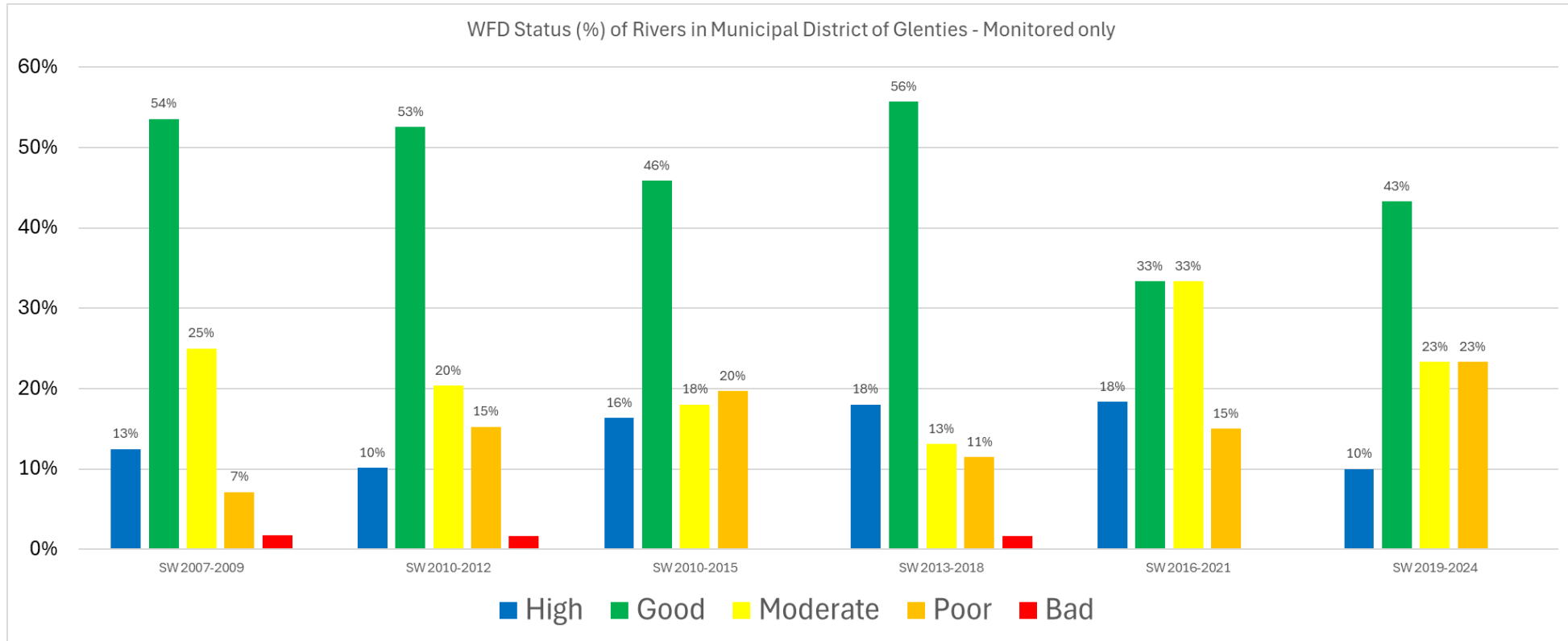
**No Decline –
 Blue Dots**

At least Good



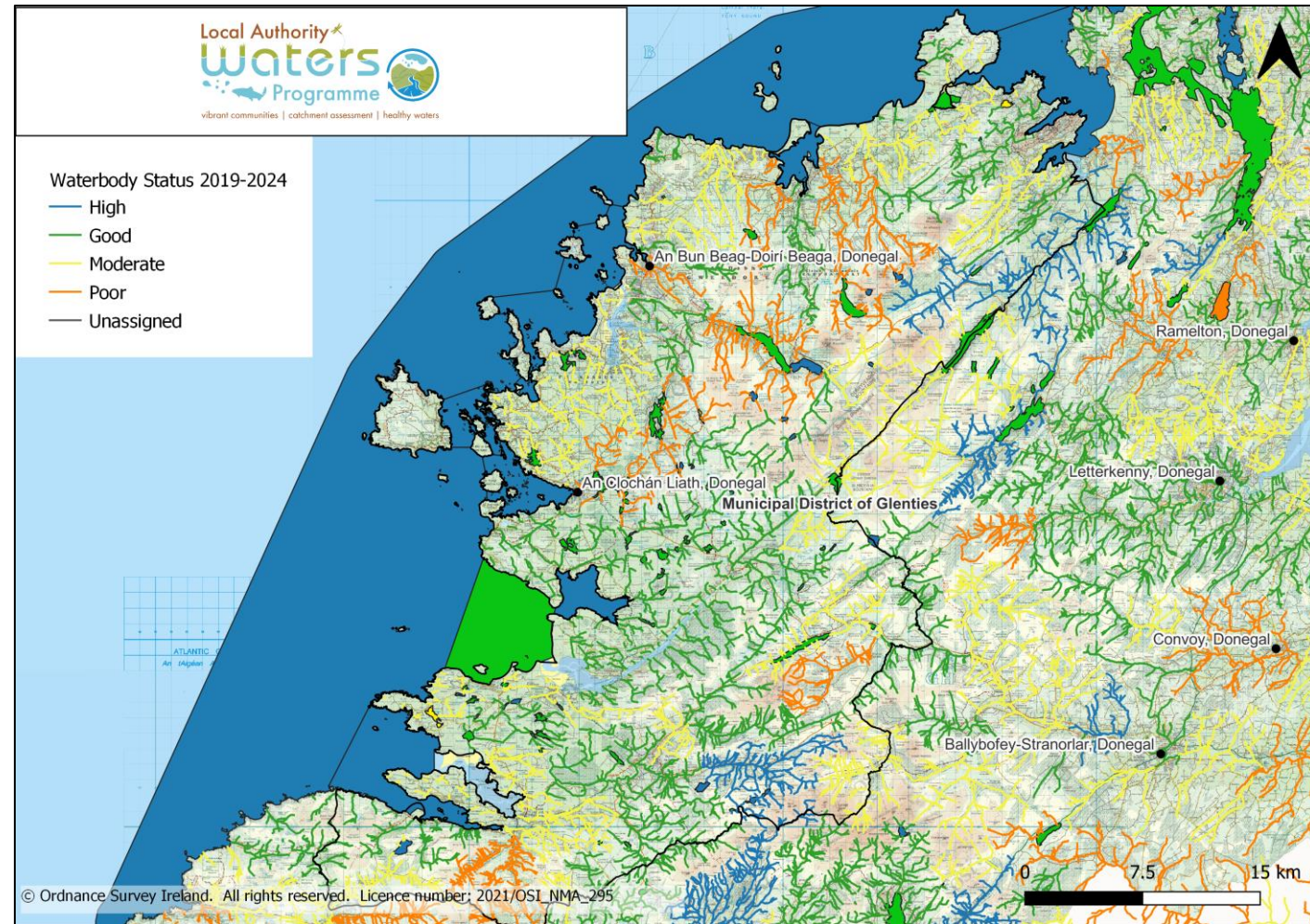
All surface waters must achieve at least Good Ecological Status by 2027

Water quality in Glenties MD



Water Quality in Glenties MD

- **High** – 2 rivers and 14 lakes
- **Good** – ~25 rivers, 41 lakes
- **Moderate** – ~20 rivers, 3 lakes
- **Poor** - ~11 rivers, 0 lakes
- **Bad** - 0



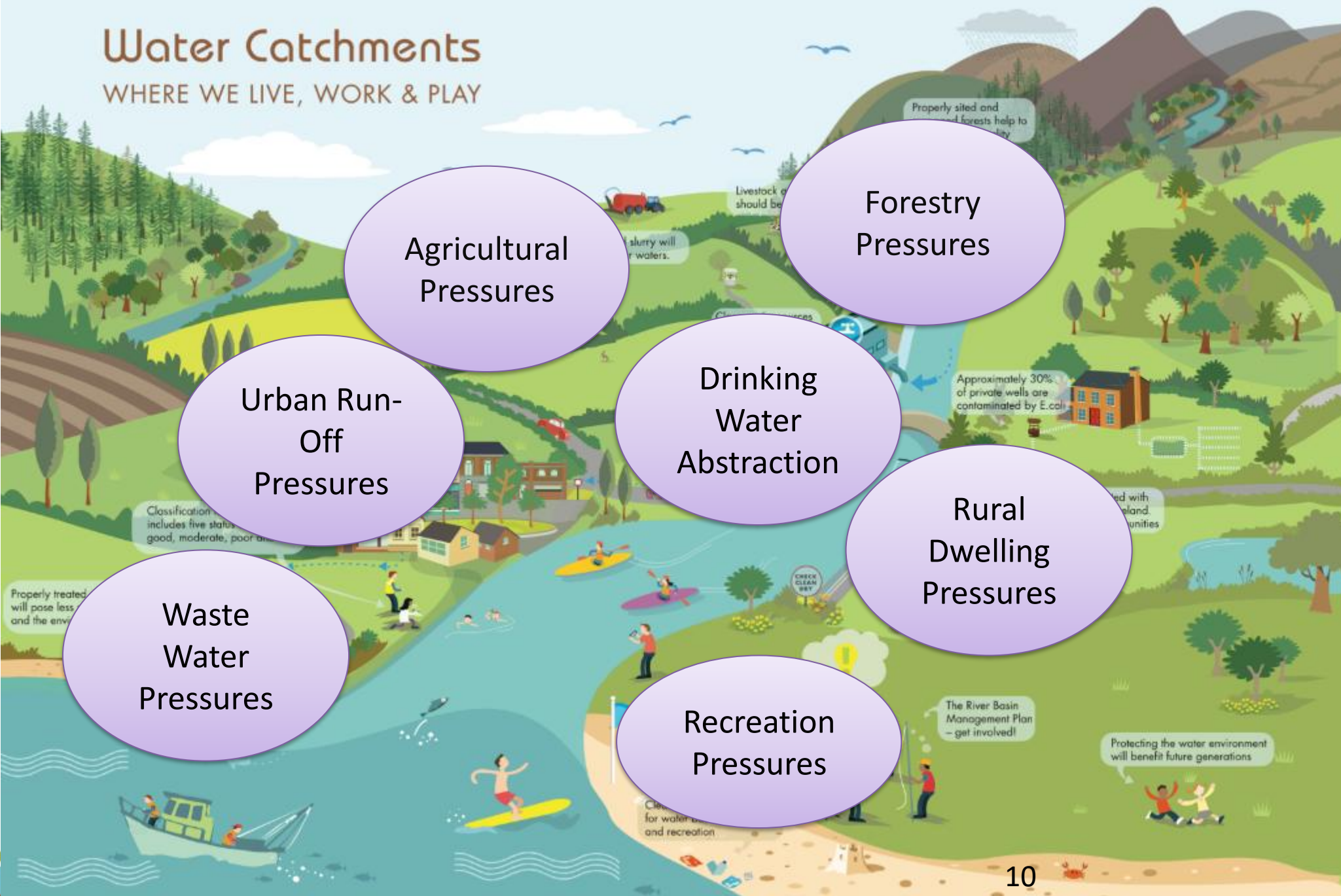
[Catchments.ie](https://catchments.ie) - Water, from source to sea.

**What impacts our
water?**



Water Catchments

WHERE WE LIVE, WORK & PLAY



Agricultural Pressures

Forestry Pressures

Urban Run-Off Pressures

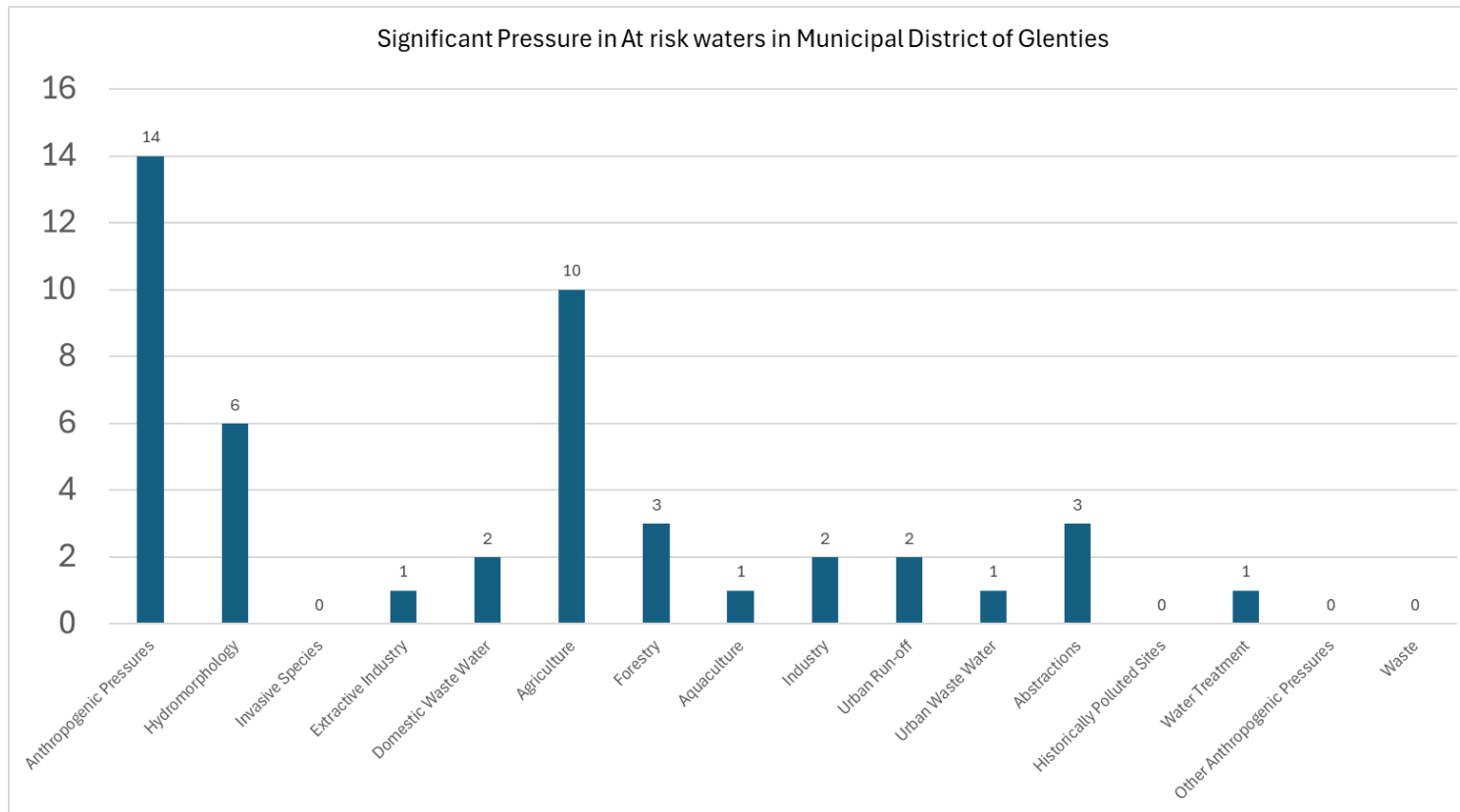
Drinking Water Abstraction

Rural Dwelling Pressures

Waste Water Pressures

Recreation Pressures

Preliminary Assessment of likely Pressures in the Glenties MD (for 2019-2024)



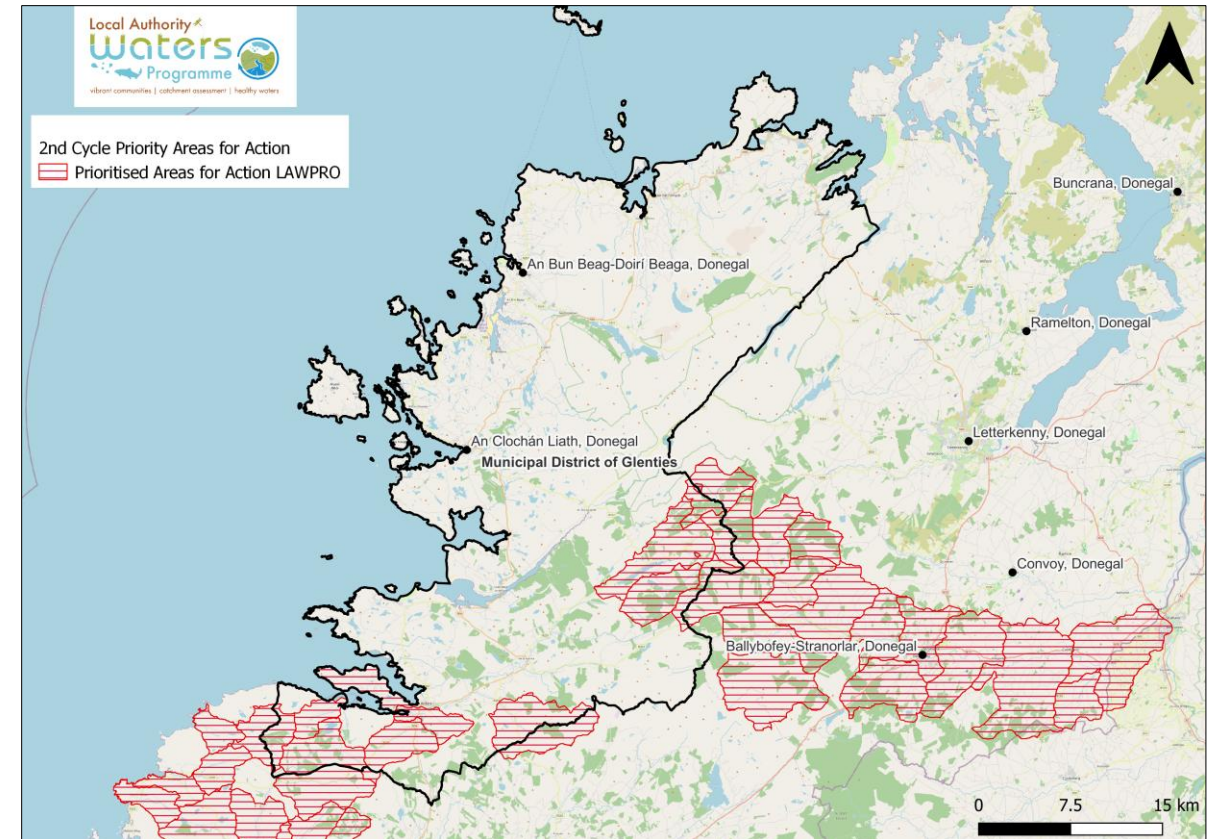
- Anthropogenic
 - (e.g high temperature's Owenwee (Doochary), Gweedore_010, Clady_010)
- Hydromorphology
 - Shape and flow of river (e.g Dams, barriers, weirs, channelisation – Clady_010)
- Extractive Industry
 - Sediment and ammonia release from turf cutting/ quarries (Corveen_010)
- Domestic Waste Water
 - E.g Septic tank issues (Catheen_010)
- Agriculture
 - E.g Chemical pollution such as sheep dips
- Forestry
 - Sediment from clearfelling (Stracashel_020)
- Urban Run-off
 - E.g Phosphate and ammonia run-off (Catheen_010 and Dungloe_020)
- UWWT
 - E.g Nutrient loss Faymore_010

What are we are doing?



LAWPRO Priority Areas for Action (2nd Cycle)

- Donegal South West and Murlins
 - Catchment Assessment mostly complete
- River Finn
 - Catchment Assessment finished in the upper reaches
 - Further assessment required for the lower reaches in 2026



All Areas for Action (3rd Cycle)

- **Areas for Restoration**

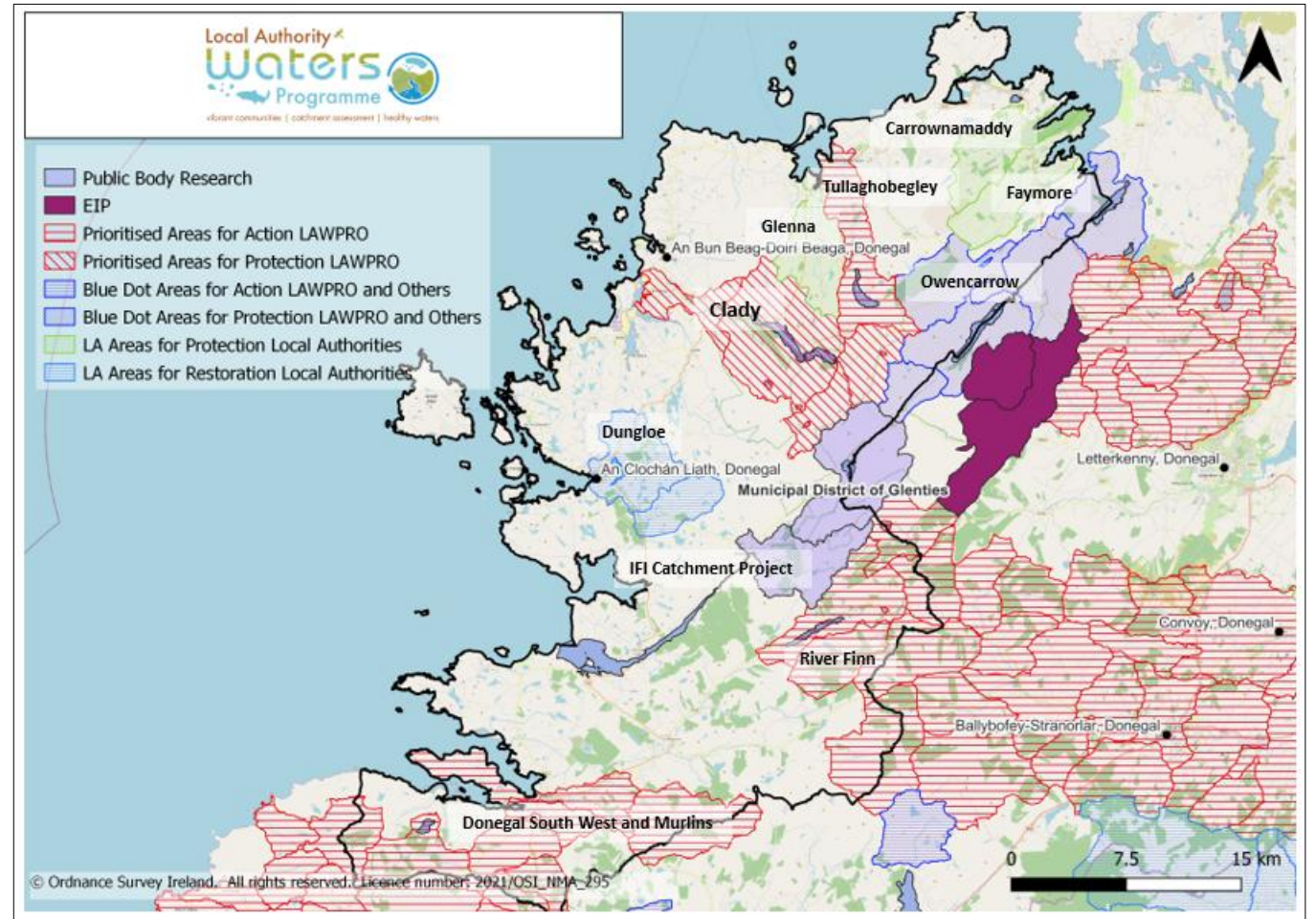
- Dungloe (Donegal County Council)
- Donegal South West and Murlins (LAWPRO)
- River Finn (LAWPRO)
- Tullaghobegley (LAWPRO)

- **Areas for Protection**

- Clady (LAWPRO)
- Owencarrow (Blue Dot) (LAWPRO)
- Glenna (Donegal County Council)
- Carrownamaddy (Donegal County Council)

- **Catchment Projects**

- IFI National Climate Change Mitigation Research - Gweebarra



Local Catchment Assessment

Finding issues on the ground



Biological sampling - invertebrates



Field chemistry and field observations



River walks



Urban assessments



Chemistry sampling



Biological sampling - vegetation

Referrals Process

- When we find issues, we let people know
 - Agriculture, we refer to ASSAP
 - Forestry, we refer to Forest Service
 - Licensed discharges, we refer to Local Authority or Environmental Protection Agency etc.
- Measures can be used then to address the impact

Where ASSAP came from

- **Collaborative approach programme between stakeholders**

- Regulation v Support – Acceptance of **need for both**

- EPA

- Dept. Housing

- LAWPRO / Local Authorities

- DAFM - NAP

- Farmer Organisations Support

- Agri Catchments Programme

- DSI – Dairy Industry Initiative



River Basin Management Plans

How ASSAP operates

- Key Principles of ASSAP
 - ASSAP programme provides farm advice and support only
 - Voluntary and collaborative
- ASSAP service available to all farmers in an ‘Area for Action’
 - Teagasc
 - Dairy Co-Ops
 - Meat Industry
- Catchment Teams (LAWPRO) carry out in stream assessments = referrals
- Advisor focused farm visits based on referrals



Pressure source types

- Point sources



- Diffuse Sources



Agricultural Farm Pressures/ Pathways



- Phosphate (Run-off)
- Sediment (Bare soil)
- Toxic Impacts e.g. Cypermethrin
- Nitrate (Leaching)

ASSAP Farmyard Management Advice

Silage Pits

- Adequate Effluent Collection
- Minimise Silage Waste

Minimise Point Sources of Nutrient

Cattle Housing

- Adequate Slurry Storage
- Adequate FYM Storage
- Collection of Seepage



Yards

- Minimise soiled water areas
- Adequate collection of soiled water
- Concrete Surface Soundness

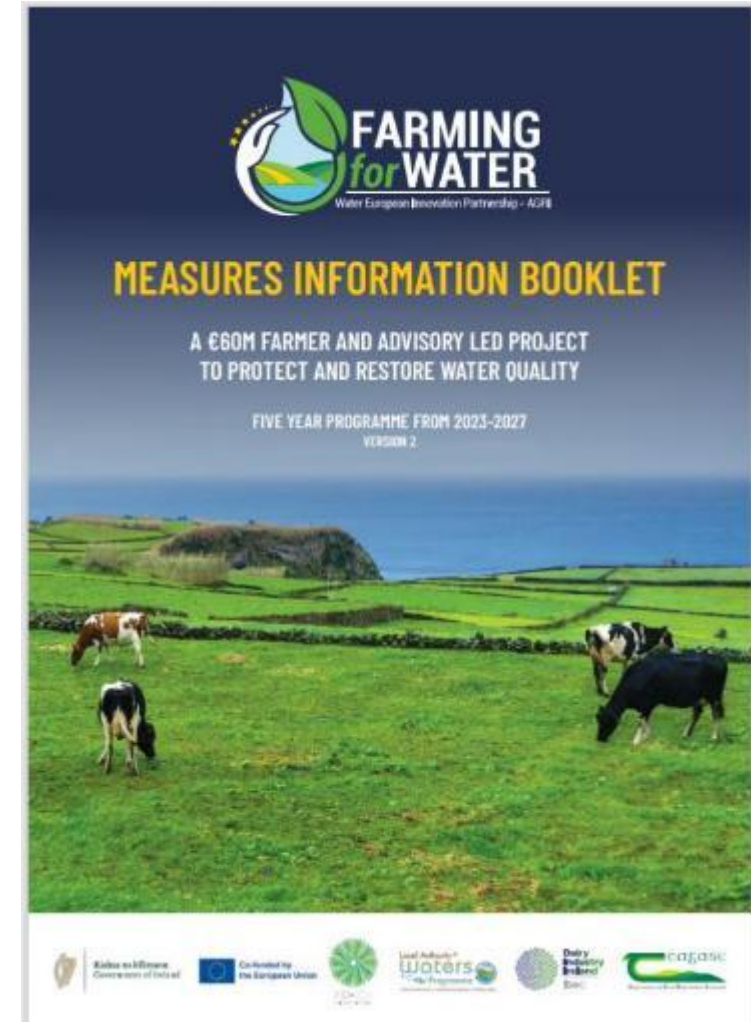
Clean Water Controls

- Drainpipes & Gutters
- Diversion Manholes

What is the Farming for Water EIP?

The Farming for Water project, aims to tackle water quality issues while promoting sustainable agricultural practices and delivering environmental benefits.

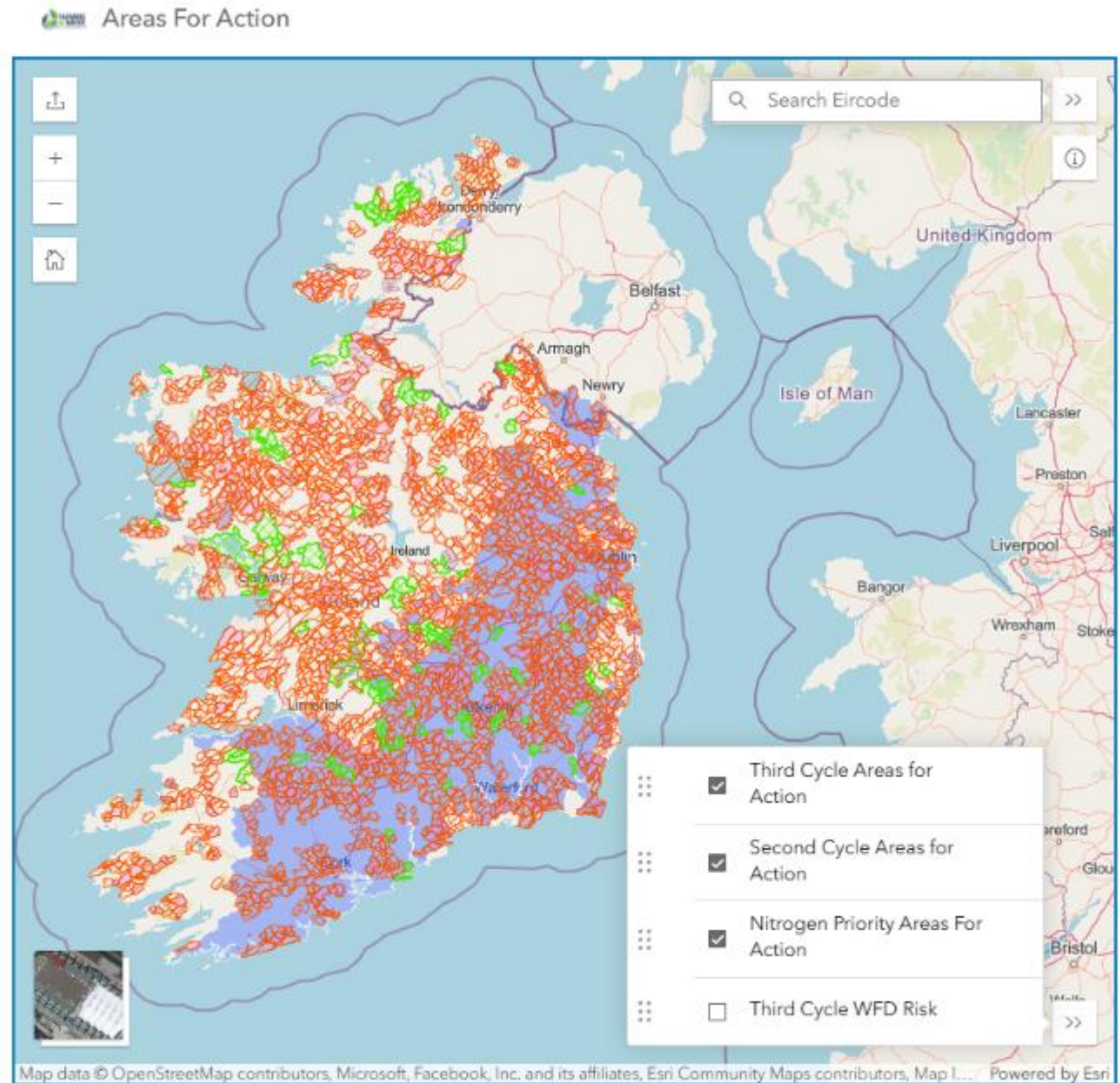
- **Collaboration & Innovation:** The project brings together farmers, researchers, policymakers, and other stakeholders to co-develop practical, scalable solutions that go beyond regulatory requirements.
- **Funding & Support:** With €50 million from DAFM and the European Commission for farmer payments and €10 million in administrative support from DHLGH, the initiative is well-funded to support on-the-ground actions.
- **Leadership & Timeline:** Led by the Local Authority Waters Programme (LAWPRO) in partnership with Teagasc and Dairy Industry Ireland, the programme launched in March 2024 and will run until 2027, engaging a wide network of collaborators including other supporting stakeholders.



Key Points

- **Prioritisation of Entry into the Project**
 - focus on specific areas based on risk levels.
- **Mapped Areas for Action:** Selected areas [Farming for Water website](https://farmingforwater.ie/).
- **Risk-Based Selection:** Entry into the project is guided by the ASSAP Advisor and is based scientific assessments of agricultural pressures on water bodies.
- **Research projects** being developed which will validate the measures being tested as part of the Farming for Water EIP.

<https://farmingforwater.ie/>



ACRES

DONEGAL

CO-OPERATION PROGRAMME

Agri-Climate Rural
Environmental Scheme

supporting

Biodiversity, Water & Climate

2023-2027



Aims '...to deliver significant long-term environmental improvement through participation by a significant number of farmers on the most appropriate land, with each making a strong improvement on their farm.' DAFM

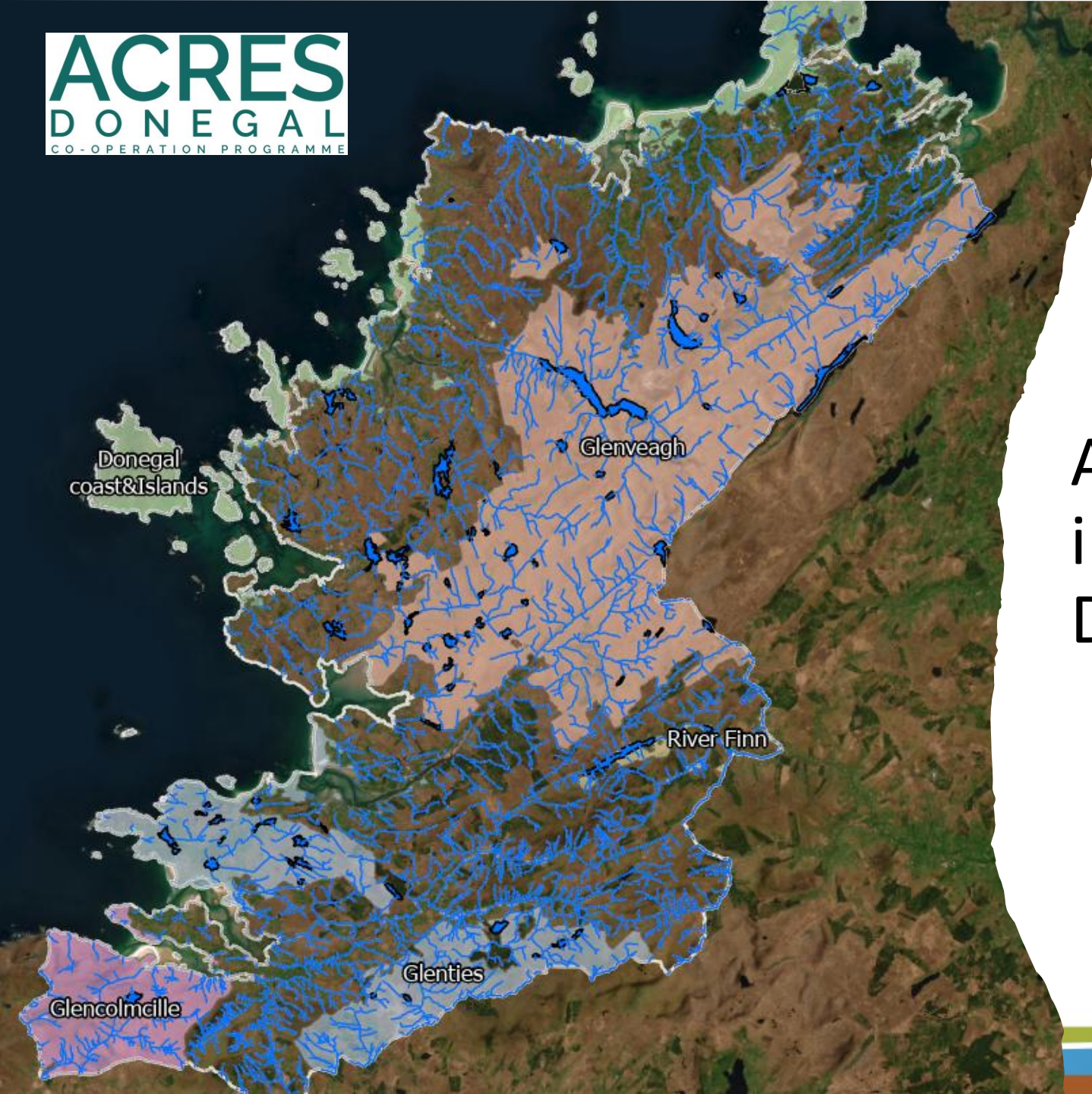
ACRES Donegal, Drumfries, Clonmany

Tel: 087 338 1548

Email: info@acresdonegal.ie

Website: www.acresdonegal.ie





ACRES Co-operation Zone in Glenties Municipal District



Community Engagement

- Lisa McDaniel is the Community Water Officer for County Donegal
- Our work with Communities
 - Funding:
 - Community Water Development Fund
 - Catchment Support Fund
 - Small Grants and Event Scheme
 - Capacity Building
 - Project Delivery: Guide development and management of local projects to improve water quality
 - Citizen Science Stream Index: Encourage collection of water quality data



Case Study

Cloughaneely Angling Association

- 2017 – Initial Meeting with CAA to discuss Cloughaneely Catchments
- LAWPRO have supported CAA in various initiatives, including:
 - Catchment Management Plan
 - Strategic Plan
 - Mountain Lakes Study
 - Catchment Management Group
 - Community Water Development Fund : Hydromorphology Study 2025
 - Catchment Support Fund : Ongoing running costs





Upper Tullaghobegley
bank protection and
habitat enhancement

Tree Planting
Fencing



Wild Trout Trust

Walk Over Survey



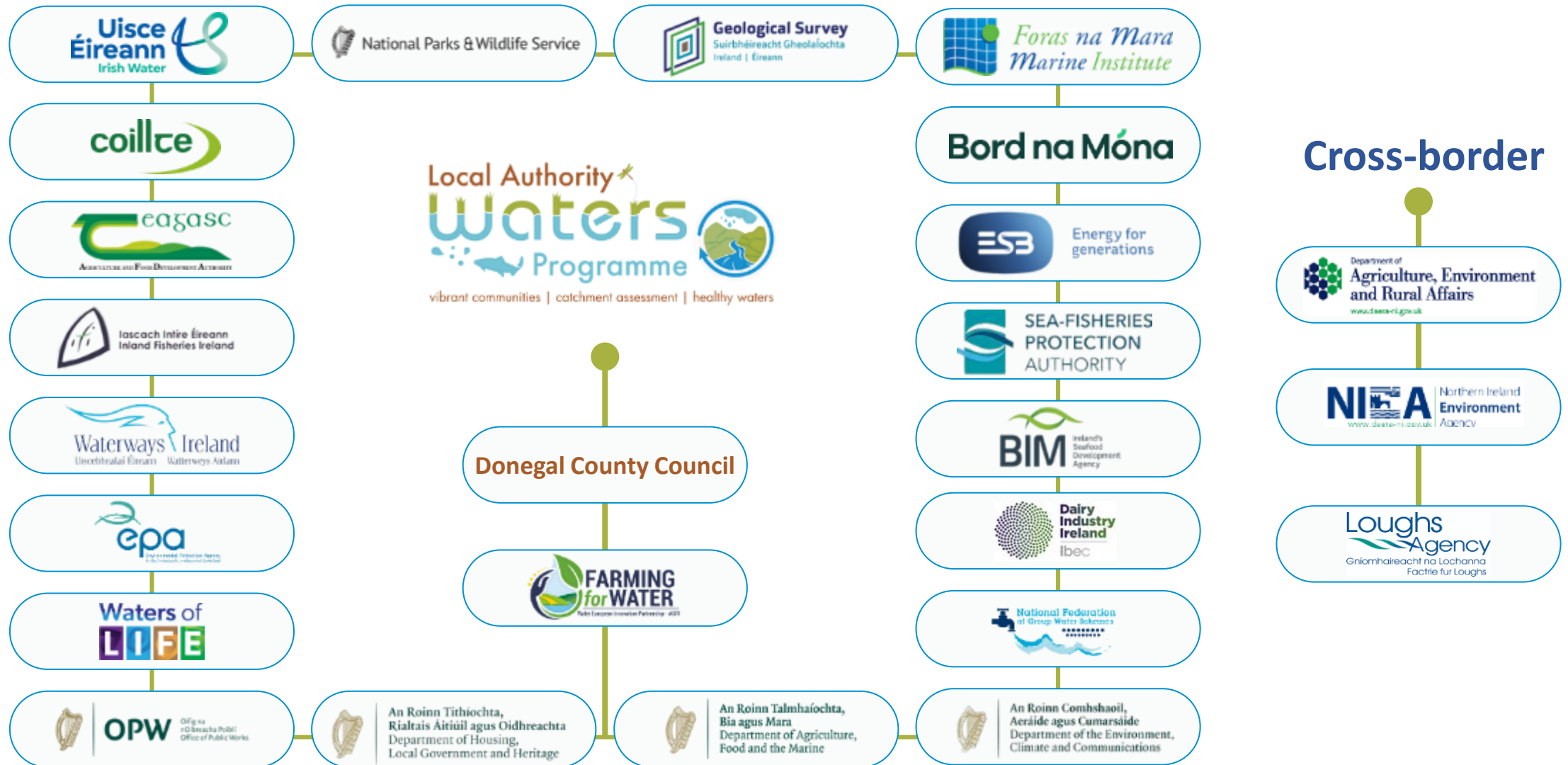
CBEC

Hydromorphology Study

Tullaghobegley Projects



Collaborative multi-agency approach to improve Water Quality



“Water is the driving force of all nature”

Leonardo da Vinci



Collaboration is key to success!!



Q and A



Meet the room

- **LAWPRO**
 - Éanna Hyland (Senior Community Water Officer)
 - Sinead Finn (Senior Community Water Officer)
 - Gary O’Connell (Catchment Science Manager)
 - Lisa McDaniel (Community Water Officer)
 - Patsy Ryan (Catchment Scientist)
- **ASSAP** - Shaun Roarty
- **Farming for Water EIP** – John Doherty
- **ACRES Donegal** – Trish Murphy

www.lawwaters.ie

www.catchments.ie

