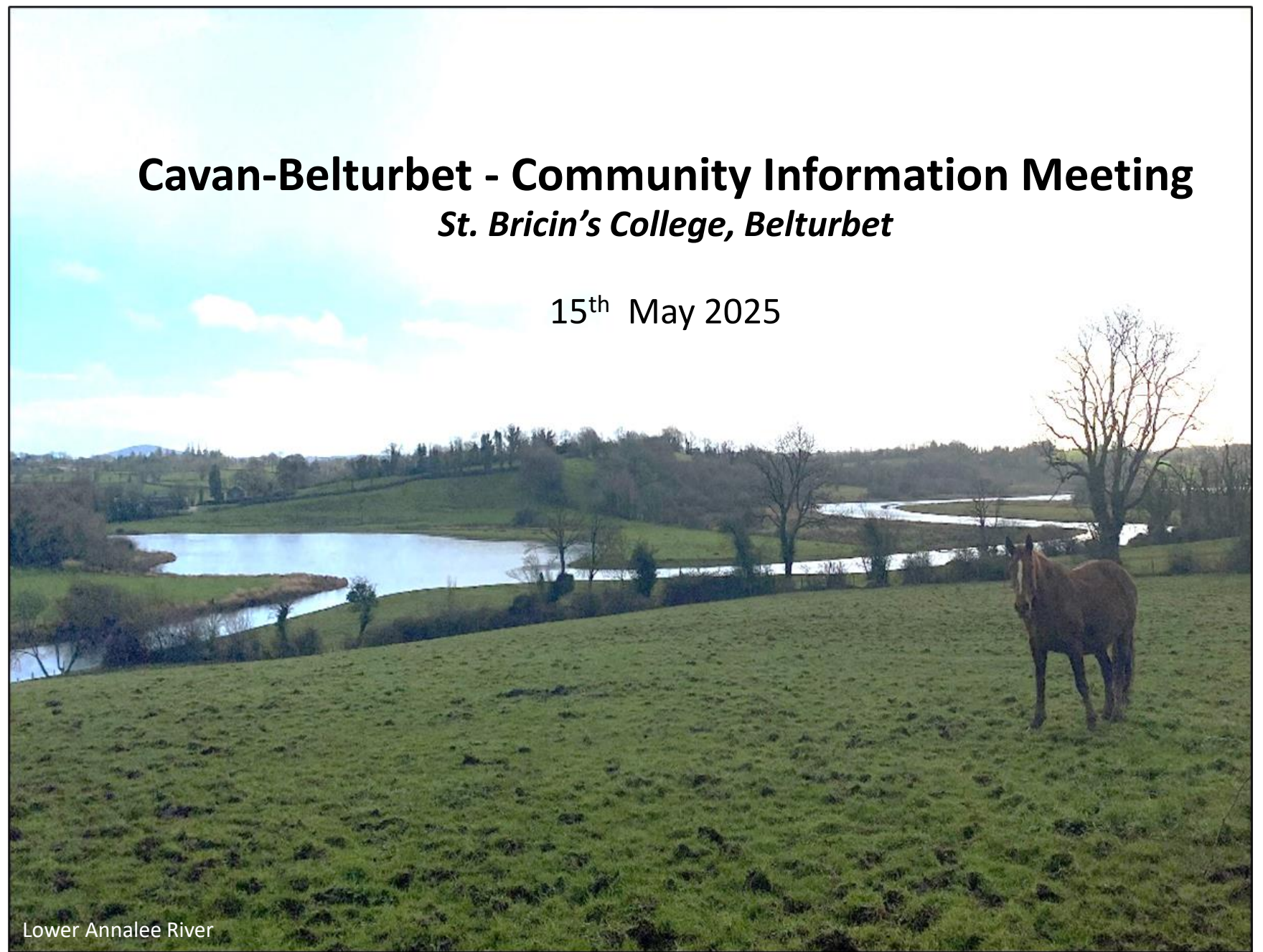


Cavan-Belturbet - Community Information Meeting


St. Bricin's College, Belturbet

15th May 2025



Lower Annalee River

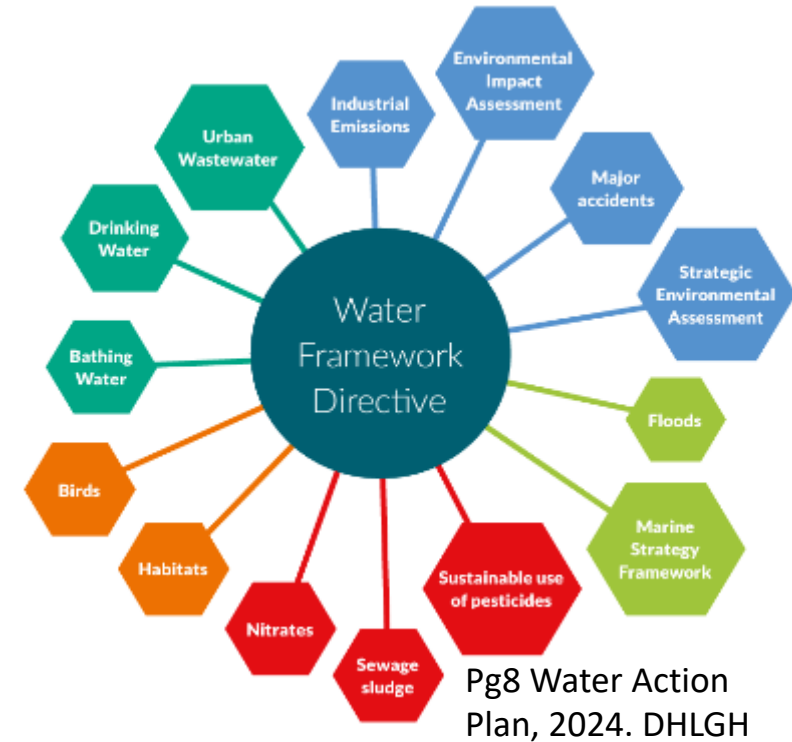
Meeting structure

- Presentation
 - 15 - 20 minutes
 - Questions and Answers
 - 10 - 20 minutes
 - Stand Engagement
 - 30 - 60 minutes
 - We have a **sign-up** sheet at the LAWPRO table if you want to be kept up to date with our work e.g. newsletter
- 

About LAWPRO

LAWPRO's three core functions:

- 1. Coordination** on behalf of local authorities and public bodies.
 - *Regional Committees (incl. cross-border representation).*
 - *Nationwide Catchment Management Plan Template*
- 2. Catchment science and management** to inform decision making:
 - *Working in Priority Areas for Action (PAA)*
 - *Building capacity within Local Authority sector through knowledge sharing and training.*
- 3. Community engagement** at a local level and nationwide.
Advocating for a healthy water environment to deliver multiple benefits for health and wellbeing, biodiversity, climate, and local communities.



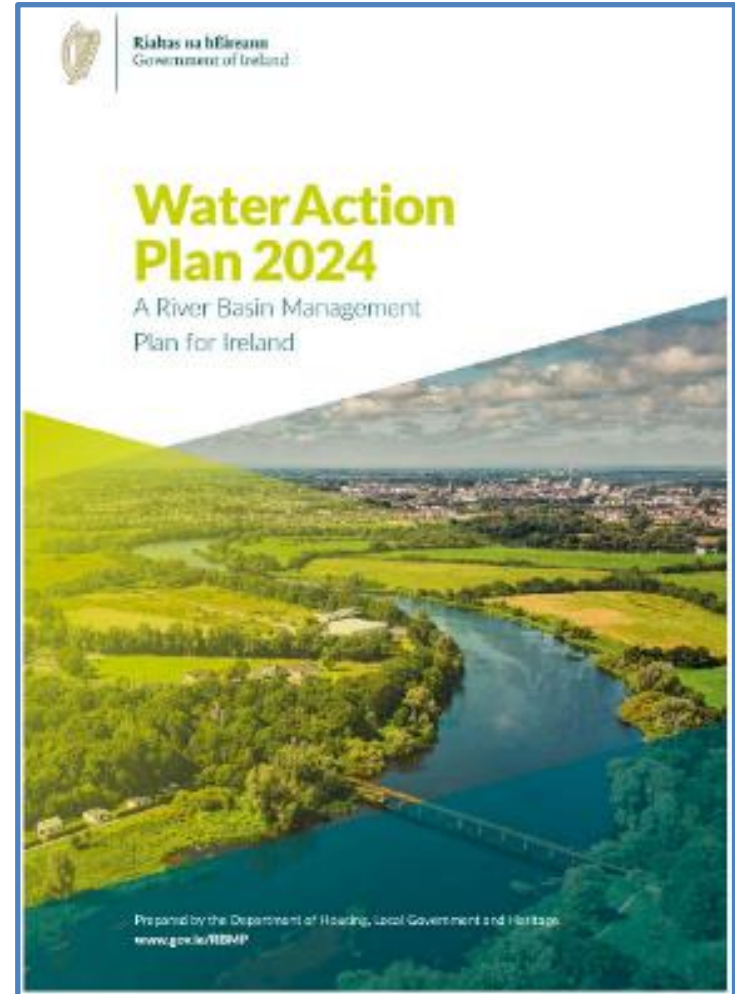
Water Action Plan 2024

Launched September 2024

- Government commitment to protecting & restoring Ireland's natural waters by complying with the requirements of the Water Framework Directive
- Accelerate the identification and implementation of the **right measures in the right places** to both restore and protect all water bodies



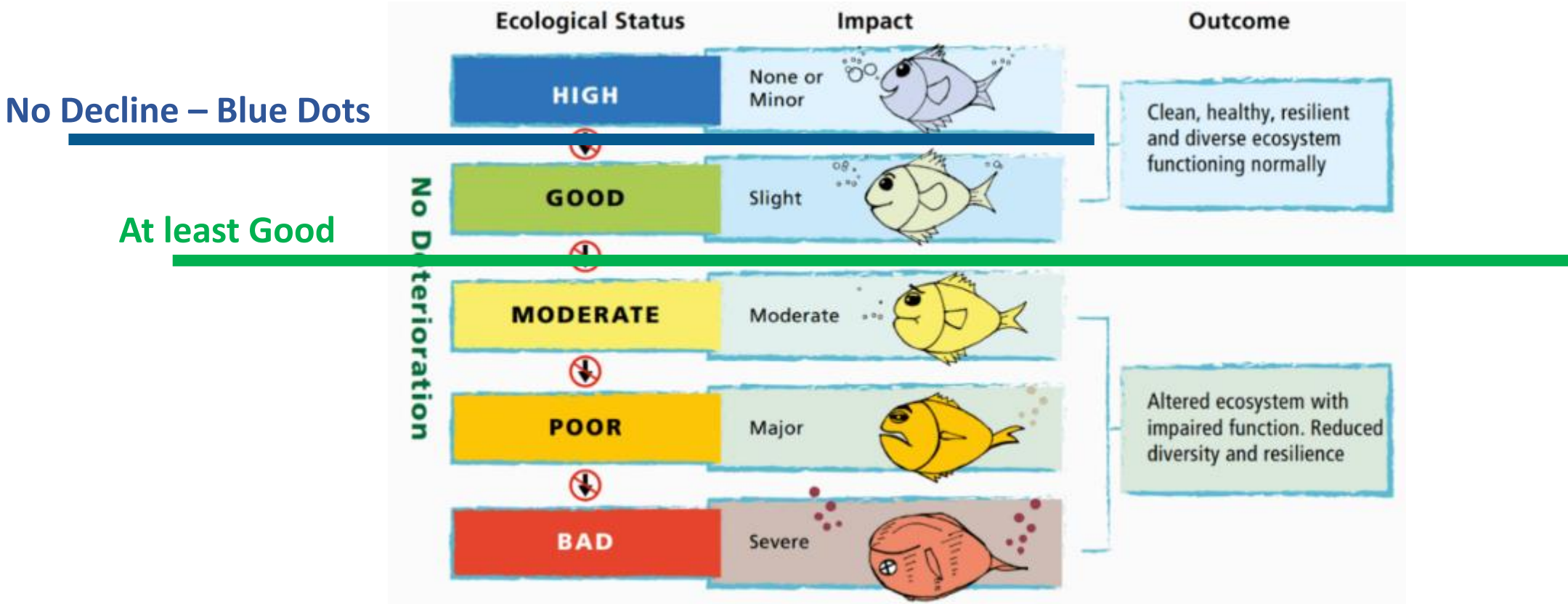
“Water is not a commercial product like any other but, rather, a heritage which must be protected, defended and treated as such” WFD, 2000/60/EC



gov.ie - River Basin Management Plan 2022 - 2027

What do we mean by water quality?

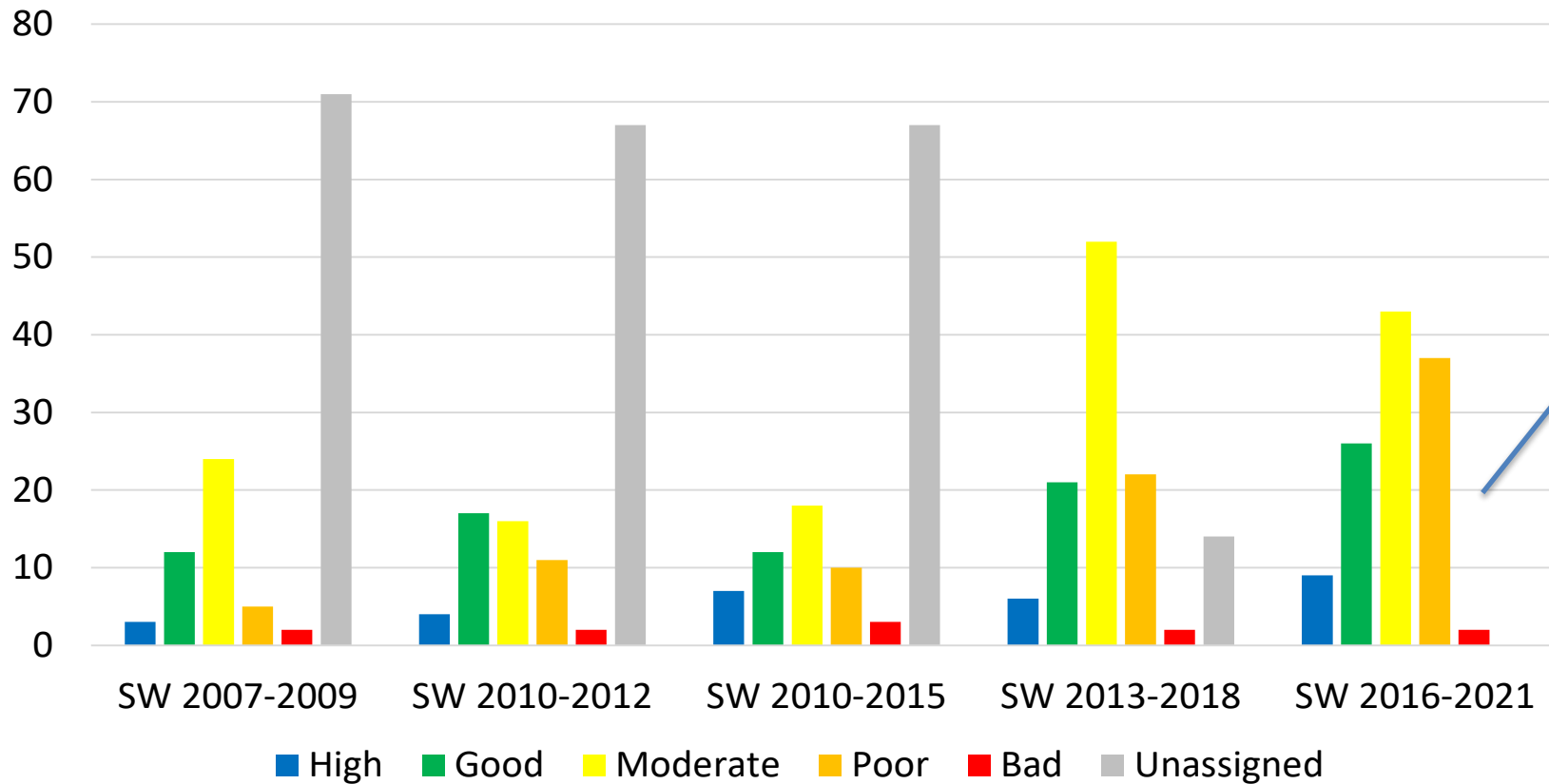
EU Water Framework Directive



All surface waters must achieve at least Good Ecological Status by 2027

Water quality in Cavan-Belturbet MD

Ecological Status of Rivers & Lakes in Cavan-Belturbet MD over time



Most recent WFD Status Assessment (2016-2021) of river waterbodies in the Cavan- Belturbet MD 117 Waterbodies (WBs)

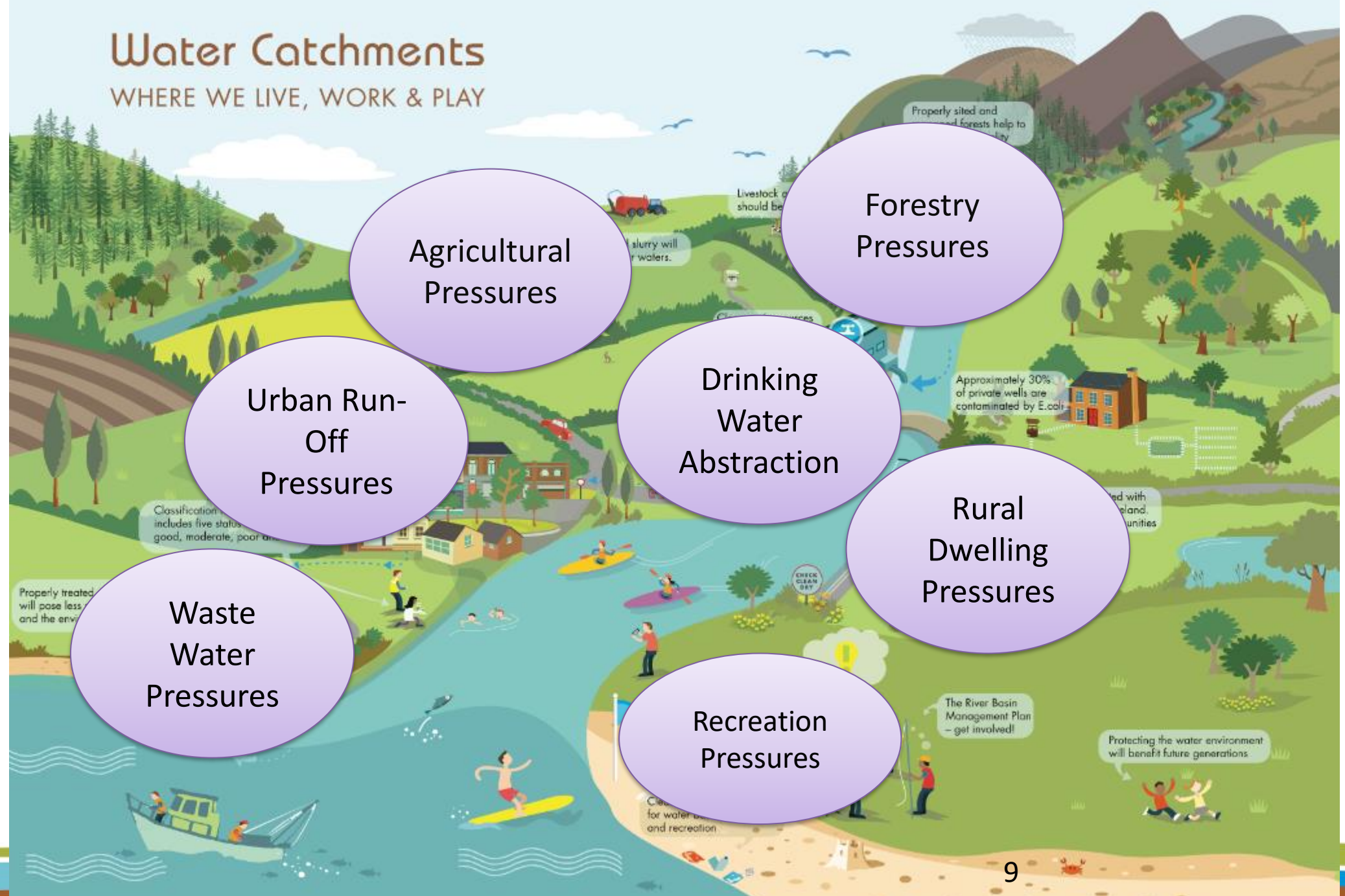
- **High** – 9 WBs
- **Good** – 26 WBs
- **Moderate** – 43 WBs
- **Poor** - 37 WBs
- **Bad** – 2 WBs

What impacts our water?



Water Catchments

WHERE WE LIVE, WORK & PLAY



Agricultural Pressures

Forestry Pressures

Urban Run-Off Pressures

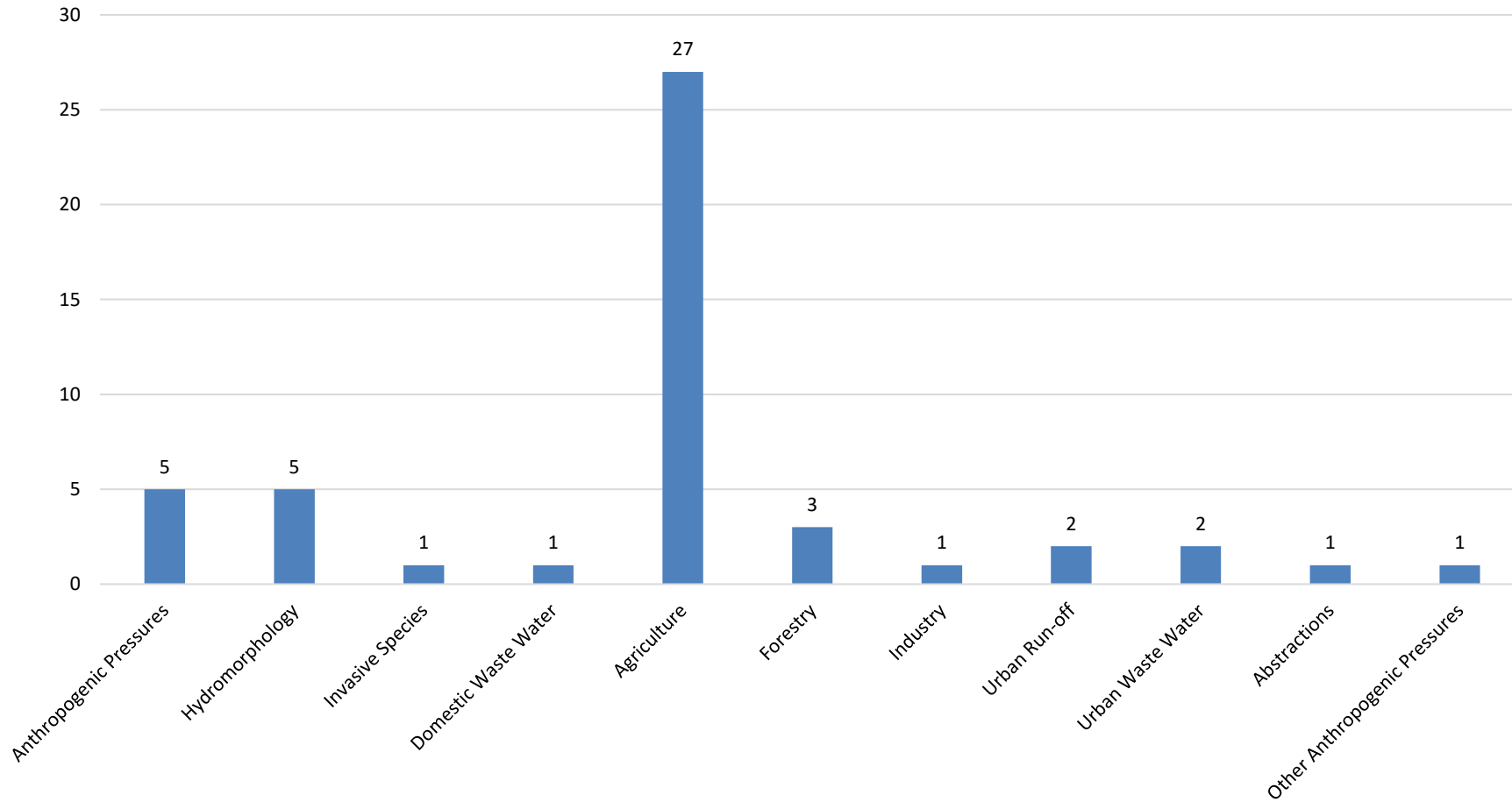
Drinking Water Abstraction

Rural Dwelling Pressures

Waste Water Pressures

Recreation Pressures

EPA preliminary assessment of likely pressures impacting *At Risk* waterbodies in the Cavan-Belturbet MD



- Agriculture
 - Most common land use
- Anthropogenic Pressures
 - Unknown in most cases
- Hydro-morphology
 - Shape and flow of river.
 - LAWPRO will assess for all sections

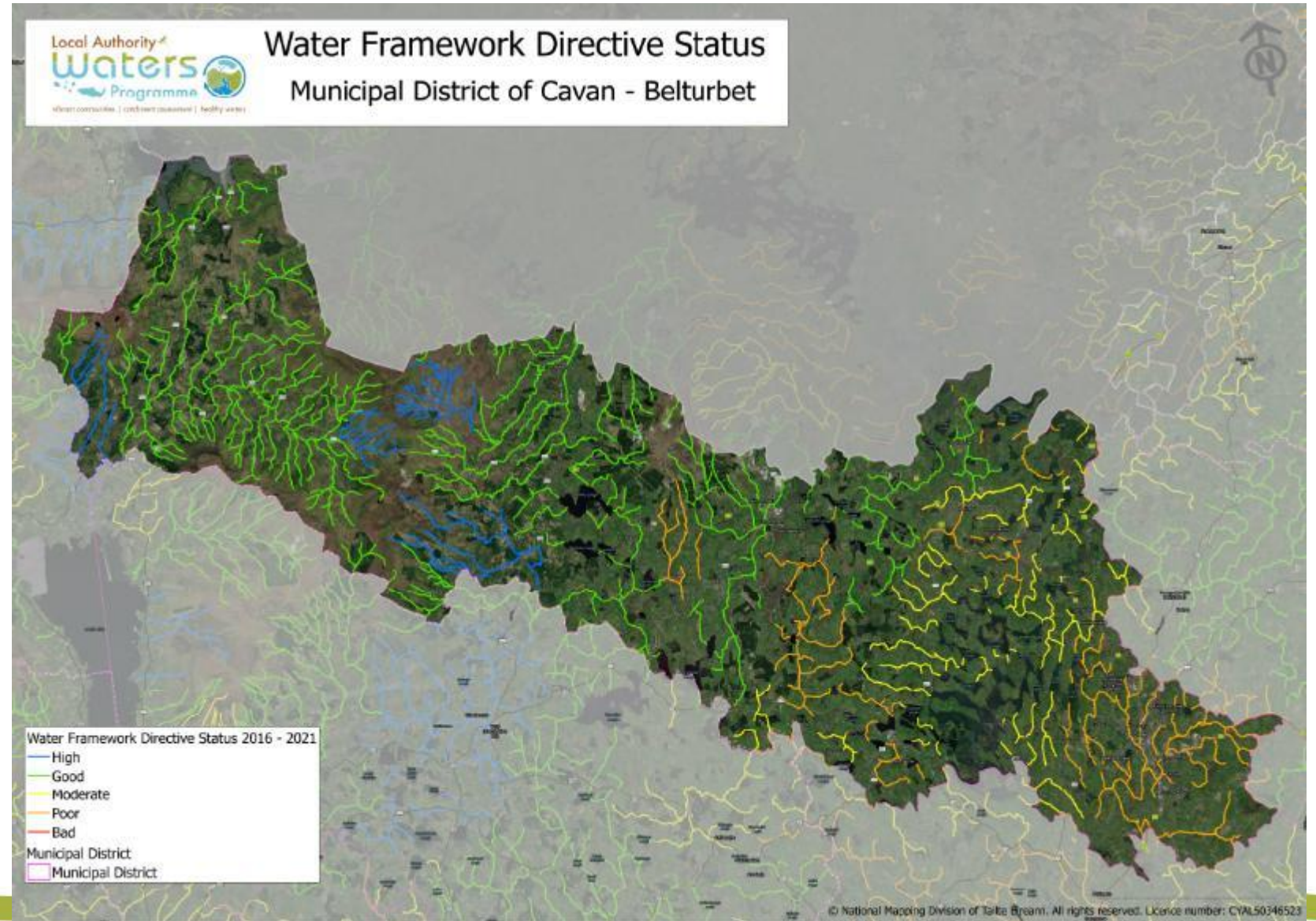
What are we are doing



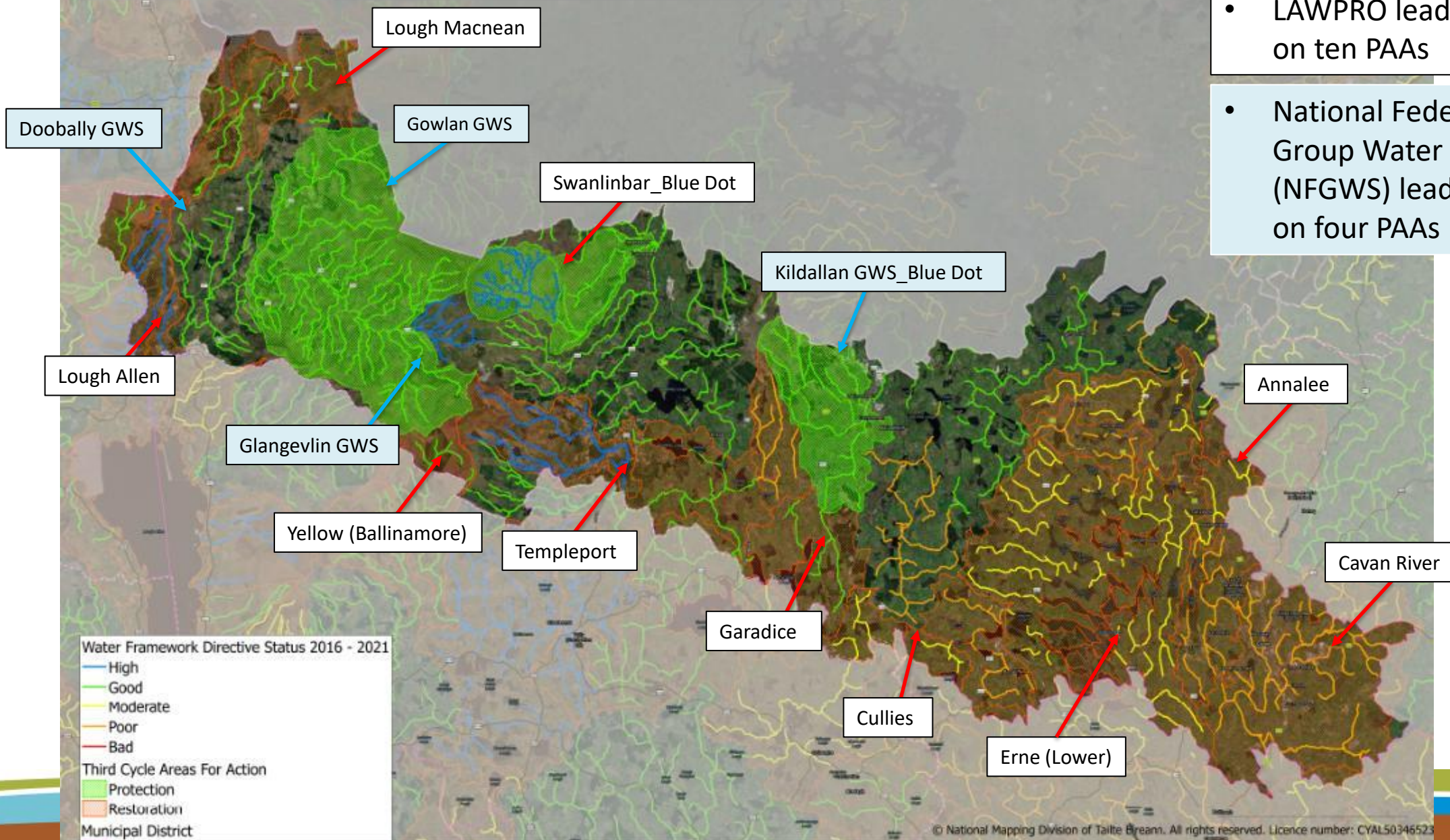
Priority Areas for Action (PAAs) in the Cavan-Belturbet MD

- 50 River waterbodies
- 67 Lake waterbodies

That intersect with or are contained within the Cavan-Belturbet MD



Priority Areas for Action (PAAs) in the Cavan-Belturbet MD



- LAWPRO lead organisation on ten PAAs

- National Federation of Group Water Schemes (NFGWS) lead organisation on four PAAs

Local Catchment Assessment finding issues on the ground



Field chemistry and field observations



Biological sampling - invertebrates



River walks



Urban assessments



Chemistry sampling



Biological sampling - vegetation

Referrals Process

- When we find issues, we let people know
 - Agriculture, we refer to ASSAP
 - Forestry, we refer to Forest Service
 - Licensed discharges, we refer to Local Authority or Environmental Protection Agency etc.
- Measures can be used then to address the impact

What is The ASSAP?

- Agricultural Sustainability Support and Advisory Programme
- Focus is on improving water quality in Priority Areas for Action (PAA)
- Provides free & confidential farm advice and acceptance is voluntary
- Industry, government, farm orgs collaboration
- 44 Advisors - 20 Teagasc, 24 from Dairy Co-ops
- Work in collaboration with Local Authority Waters Programme (LAWPRO)
- LAWPRO – scientific investigation; LCA, desk study, chemical, biological, hydro morphology etc., assess streams
- Provide referrals to advisors to focus farm visits



CARBERY



An Roinn Tithíochta,
Rialtais Áitiúil agus Oidhreacht
Department of Housing,
Local Government and Heritage



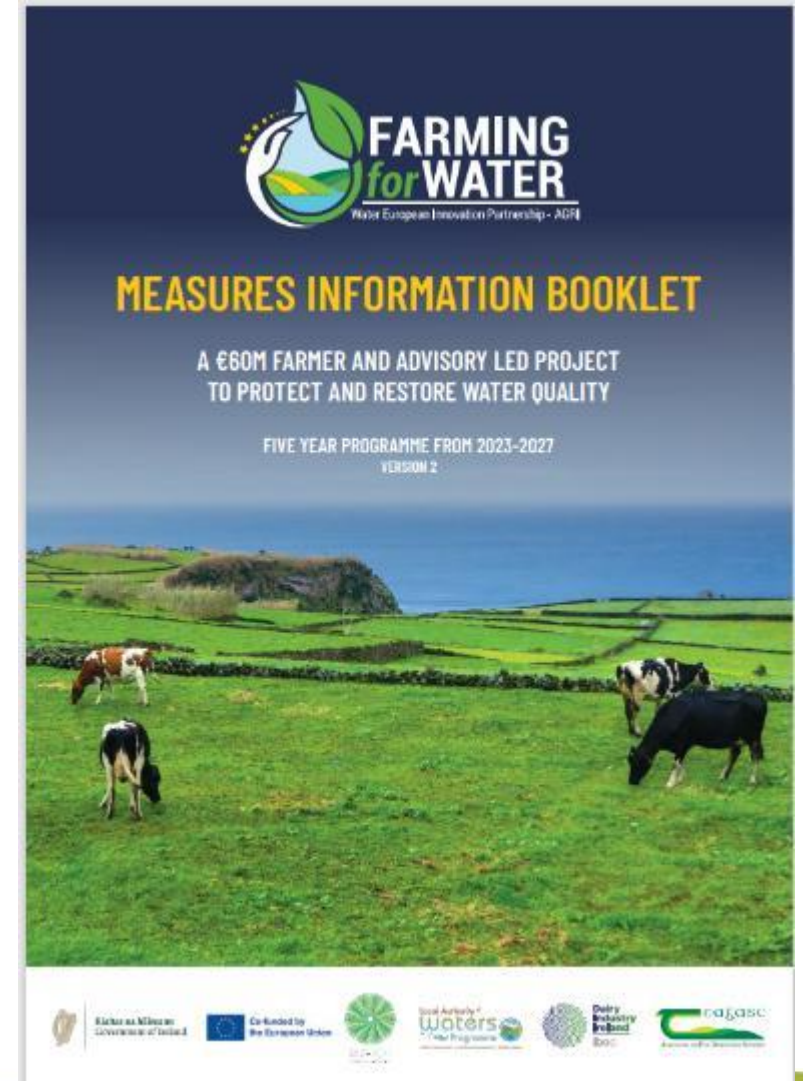
An Roinn Talmhaíochta,
Bia agus Mara
Department of Agriculture,
Food and the Marine



What is the Farming for Water EIP?

The Farming for Water project, aims to tackle water quality issues while promoting sustainable agricultural practices and delivering environmental benefits.

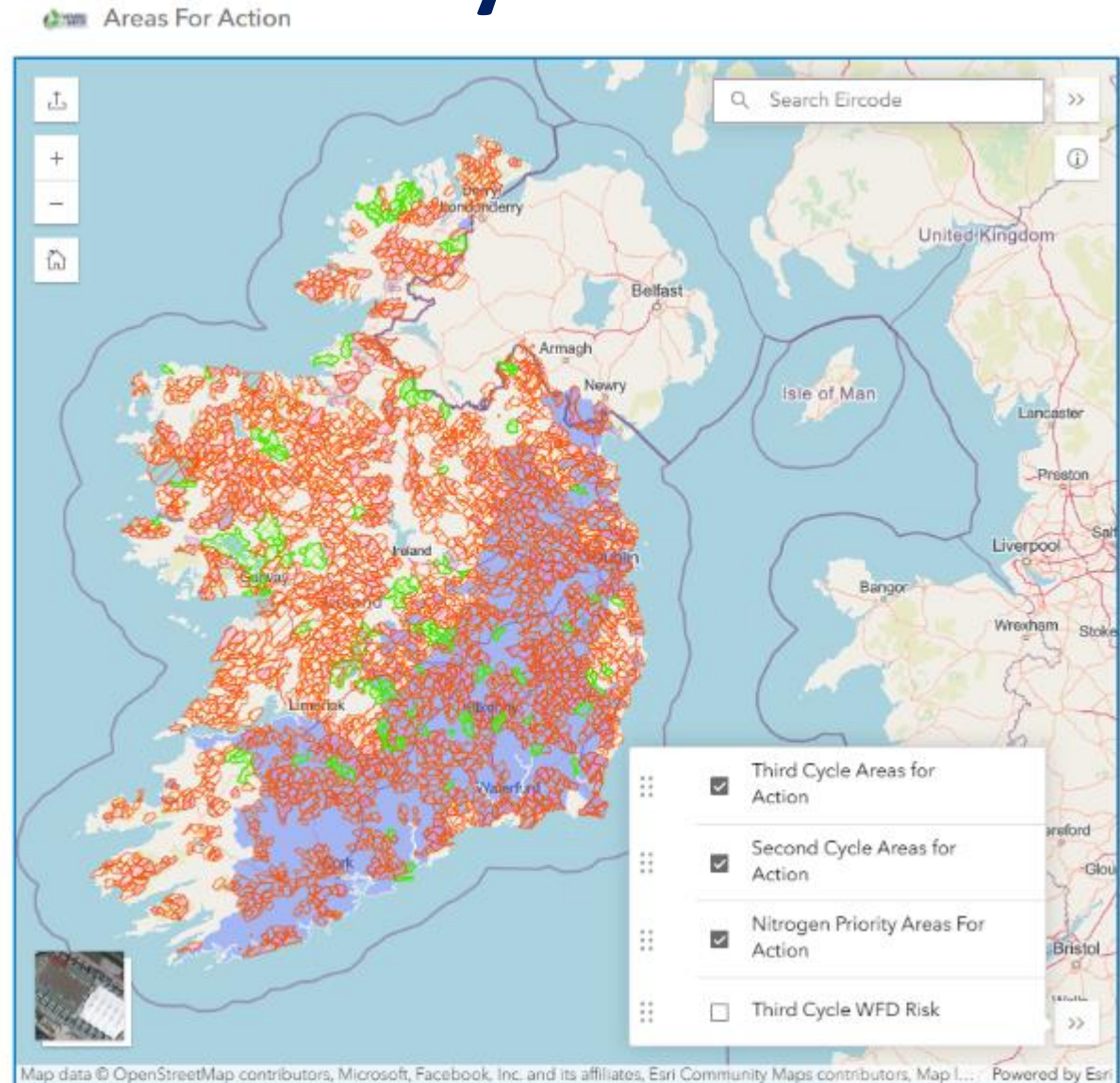
- **Collaboration & Innovation:** The project brings together farmers, researchers, policymakers, and other stakeholders to co-develop practical, scalable solutions that go beyond regulatory requirements.
- **Funding & Support:** With €50 million from DAFM and the European Commission for farmer payments and €10 million in administrative support from DHLGH, the initiative is well-funded to support on-the-ground actions.
- **Leadership & Timeline:** Led by the Local Authority Waters Programme (LAWPRO) in partnership with Teagasc and Dairy Industry Ireland, the programme launched in March 2024 and will run until 2027, engaging a wide network of collaborators including other supporting stakeholders.



- **Prioritisation of Entry into the Project**
 - focus on specific areas based on risk levels.
- **Mapped Areas for Action:** Selected areas [Farming for Water website](https://farmingforwater.ie/).
- **Risk-Based Selection:** Entry into the project is guided by the ASSAP Advisor and is based scientific assessments of agricultural pressures on water bodies.
- **Research projects** being developed which will validate the measures being tested as part of the Farming for Water EIP.

<https://farmingforwater.ie/>

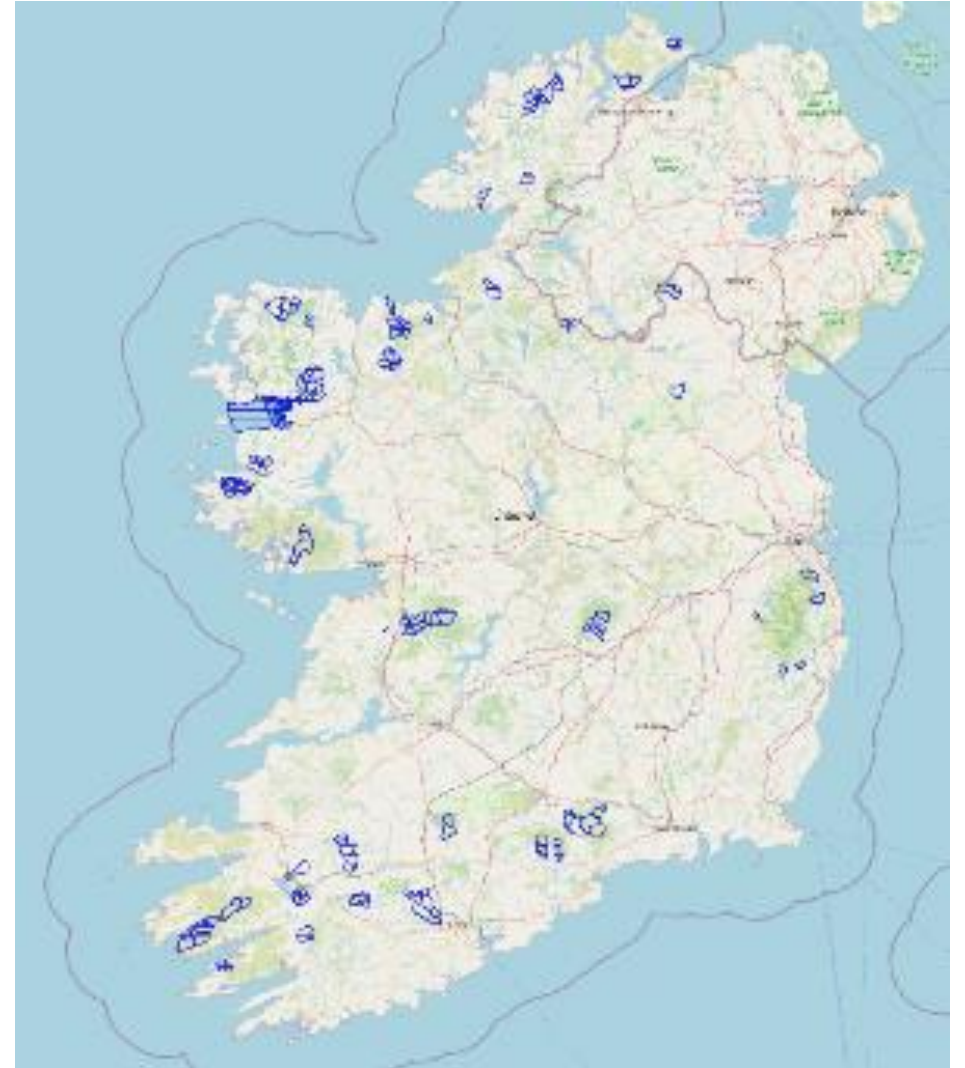
Key Points





Blue Dot Catchment Programme

- Blue Dot waters are our best quality waters
- Blue Dots = High Ecological Status Objective
- Currently there are 402 Blue Dots
 - Majority along the Western seaboard, Wicklow and upland areas of the Midlands and South
 - There are 2 Blue Dots in County Cavan (Swanlinbar & Chapel Lake Stream)
- Why Should we Protect Blue Dots?
 - Protect some of our most iconic and threatened species Salmon, Arctic Char, Freshwater Pearl Mussels among many others
 - Act as an arc, sensitive species can recolonise other waterbodies as we improve water quality
 - Societal wellbeing, ecosystem services like clean water or vital natural sites for recreation



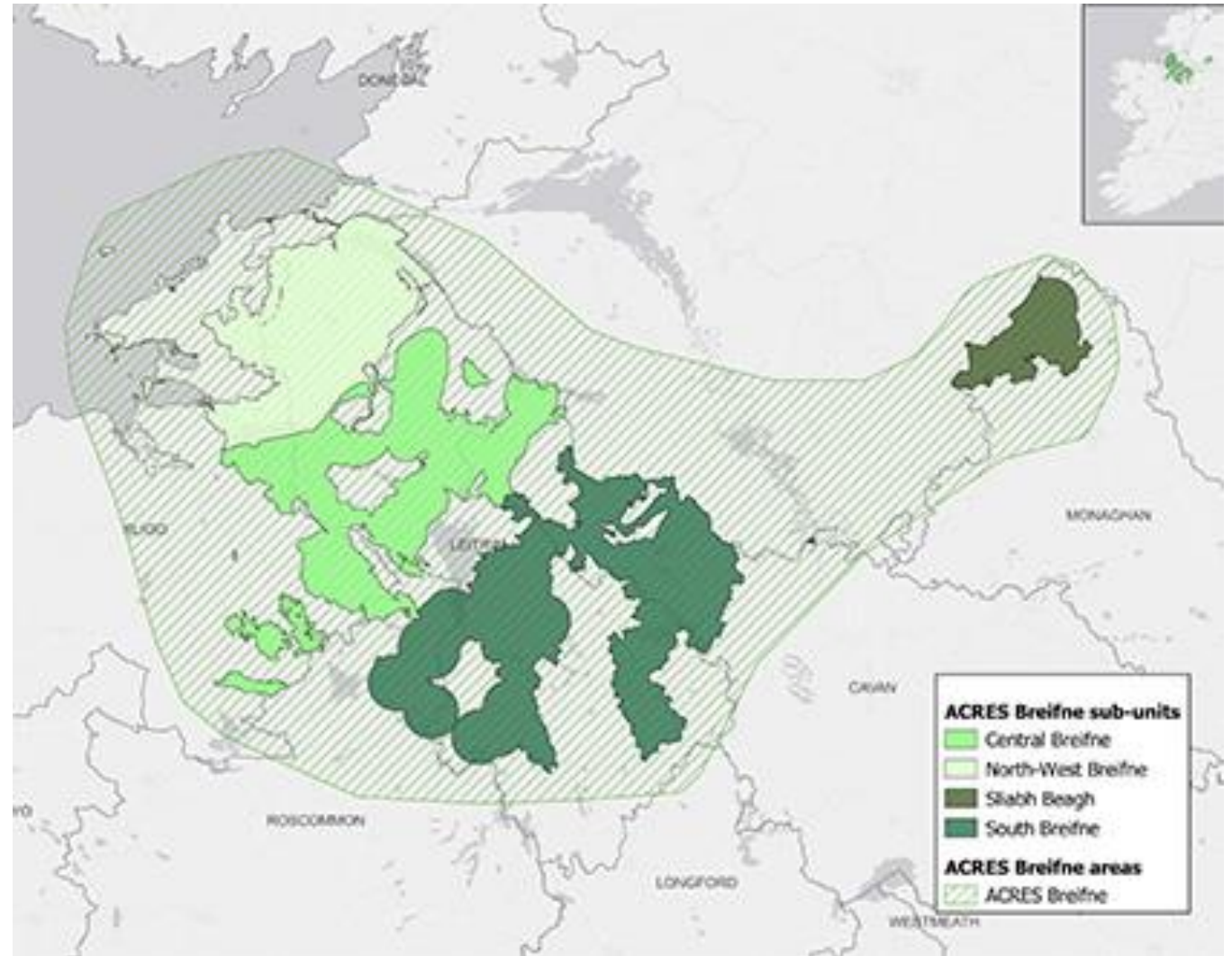
<https://lawaters.ie/blue-dot-programme/>



ACRES: General and CP

- [ACRES Co-operation approach](#): available to farmers in eight high-priority geographical areas, who opt to undertake measures, as well as bespoke farm, and landscape actions (ACRES Breifne- South Breifne & Central Breifne).
- [ACRES General](#): available nationally (outside of the high priority geographical area defined for the ACRES Co-operation approach) and offers a range of actions for individual farmers, both targeted and general.

<https://acresireland.ie/breifne/>



Community Engagement

- Eoghan Connaughton is the Community Water Officer for the Border Region covering counties Cavan, Monaghan and Louth
- Our work with Communities
 - Community Water Development Fund
 - Catchment Support Fund
 - Small Grants

 - Capacity Building
 - Project Delivery
 - Citizen Science Stream Index

Eoghan Connaughton

085 850 0303

econnaughton@lawaters.ie

Community Actions in Cavan

- St Bricin's 'Environmental Science' Lecture
- Mullagh Sports Partnership
- West Cavan Bog Association
- Virginia Town Team

Eoghan Connaughton

085 850 0303

econnaughton@lawaters.ie

Community Actions in Cavan

- Friends of Castle Lake
- Friends of the Upper Annalee
- More actions in Cavan - Belturbet

Eoghan Connaughton

085 850 0303

econnaughton@lawaters.ie

Collaborative multi-agency approach to improve Water Quality



“Water is the driving force of all nature”

Leonardo da Vinci



Collaboration is key to success!!



Q and A



Meet the room

- **LAWPRO**
 - Andy Hallewell (Senior Community Water Officer)
 - Eoghan Connaughton (Community Water Officer)
 - Luke Kenny (Community Water Officer)
 - Vicky Veerkamp (Technical Lead)
 - Alice Reynolds (Catchment Scientist)
- **ASSAP/Farming for Water EIP**
- **ACRES**

www.lawwaters.ie

www.catchments.ie



Contact Details

