



River Moy

# Ballina MD - Community Information Meeting

*Ballina*


17<sup>th</sup> June 2025



Co-funded by  
the European Union

Waters of **LIFE**

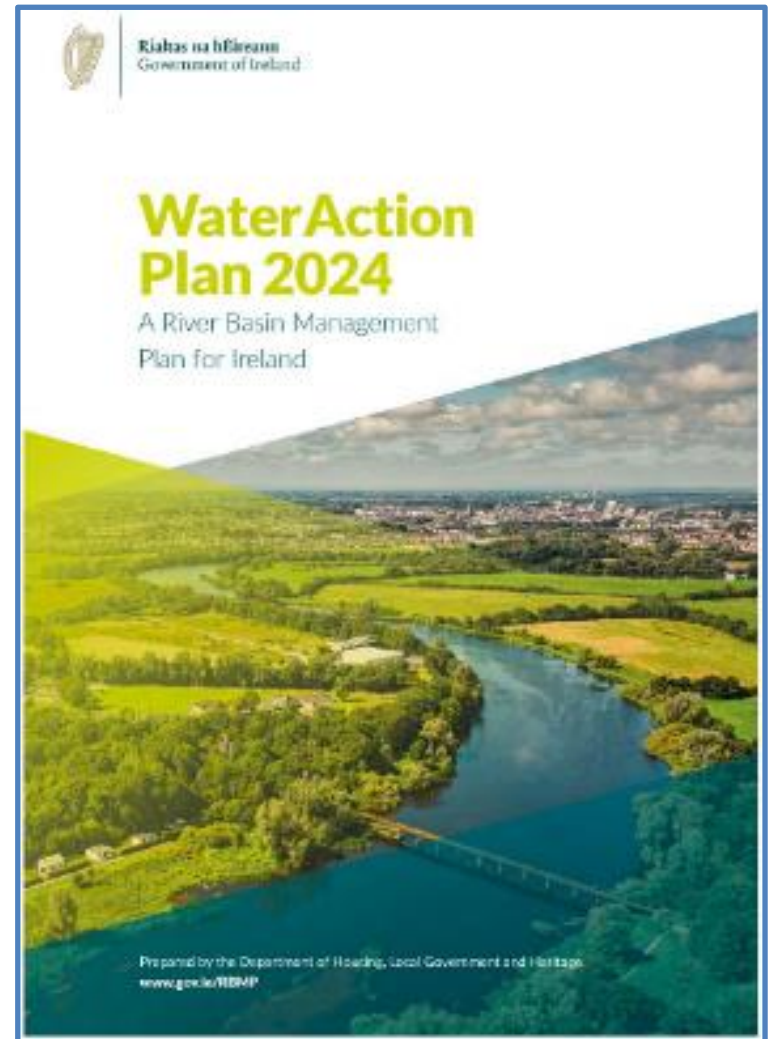
# Meeting structure

- Presentation
    - 15 - 20 minutes
  - Questions and Answers
    - 10 - 20 minutes
  - Stand Engagement
    - 30 - 60 minutes
  - We have a **sign-up** sheet at the LAWPRO table if you want to be kept up to date with our work e.g. newsletter
- 

# Water Action Plan 2024

## Launched September 2024

- Government commitment to protecting & restoring Ireland's natural waters by complying with the requirements of the Water Framework Directive
- Accelerate the identification and implementation of the **right measures in the right places** to both restore and protect all water bodies



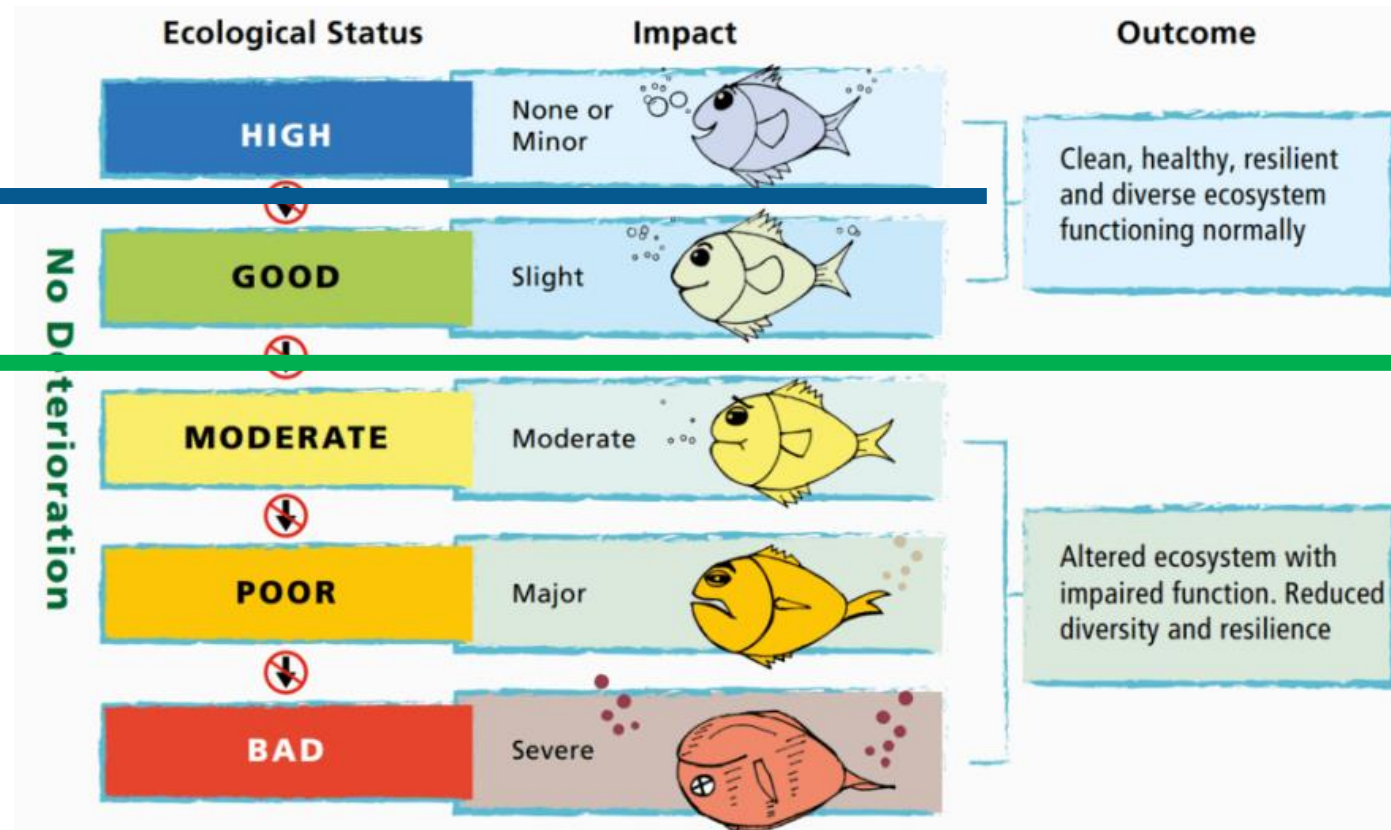
[gov.ie](http://gov.ie) - River Basin Management Plan 2022 - 2027

# What do we mean by water quality?

## EU Water Framework Directive

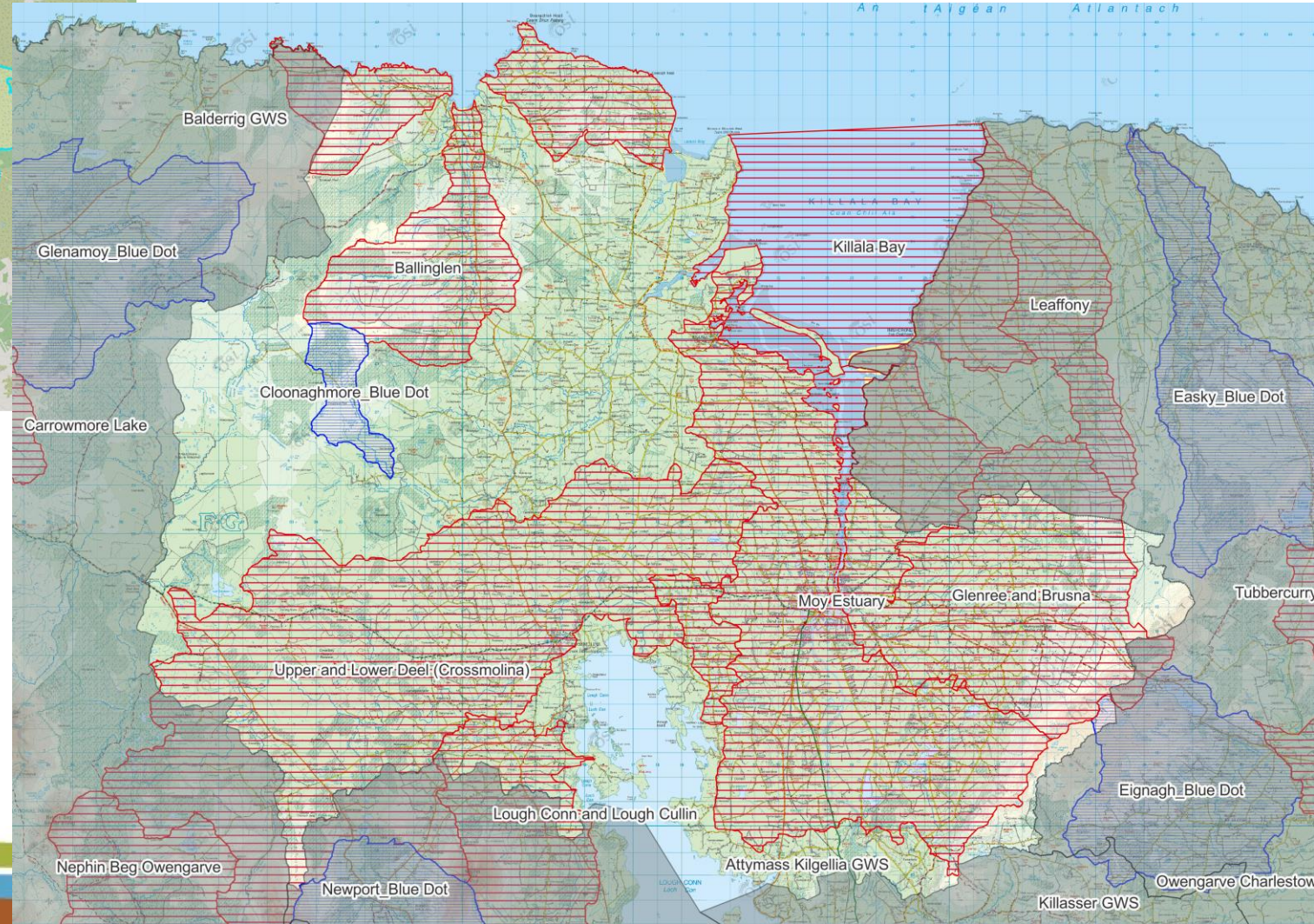
No Decline –  
Blue Dots

At least Good



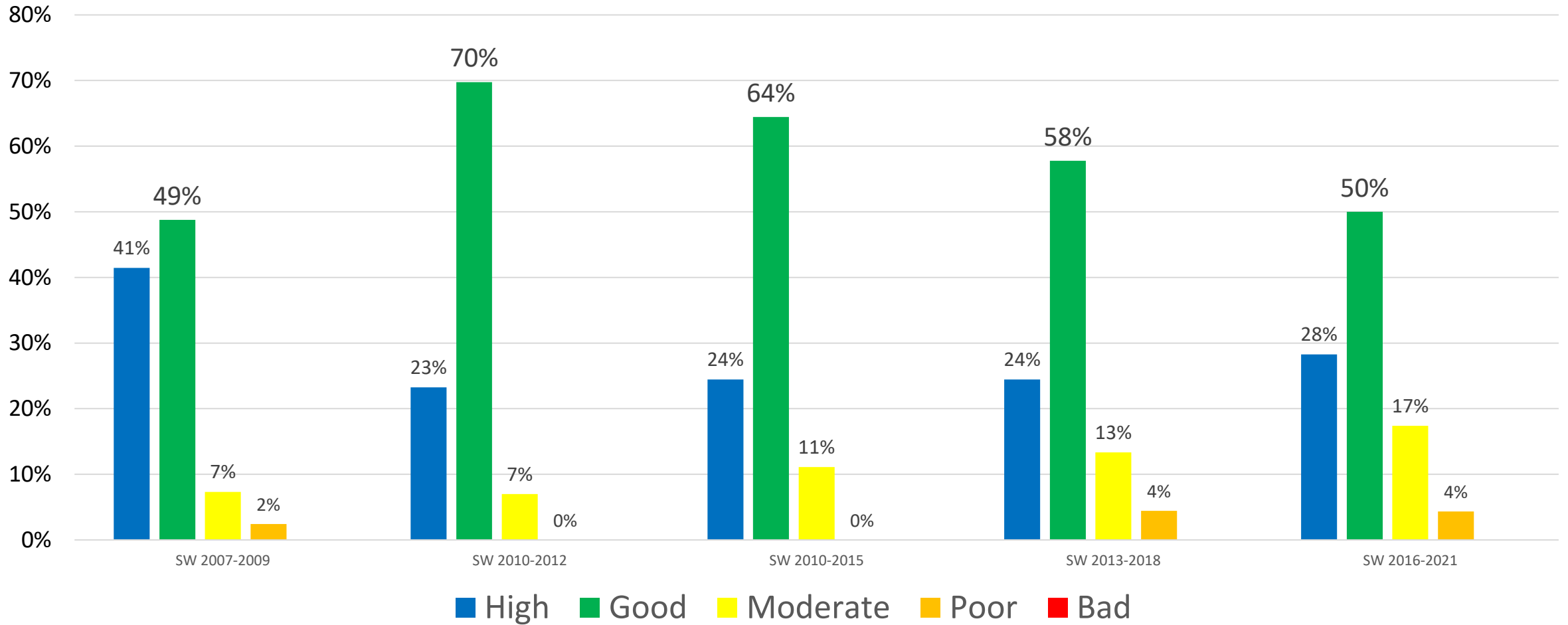
All surface waters must achieve at least Good Ecological Status by 2027

# Municipal District of Ballina



# Water quality in Ballina MD

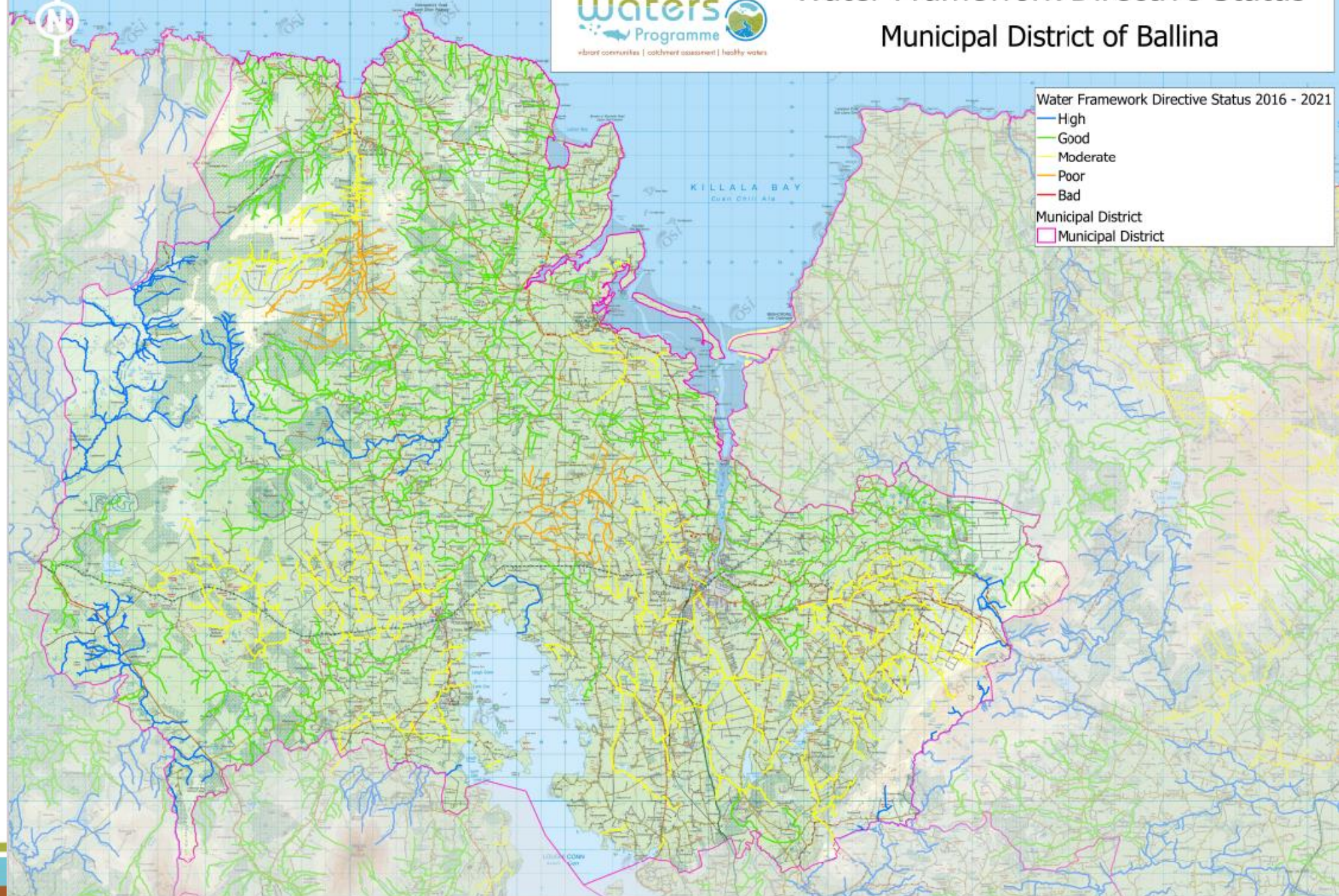
WFD Status (%) of Rivers in Municipal District of Ballina - Monitored only





# Water Framework Directive Status

## Municipal District of Ballina





# Water Framework Directive Status

## Municipal District of Ballina

Water Framework Directive Status 2016 - 2021

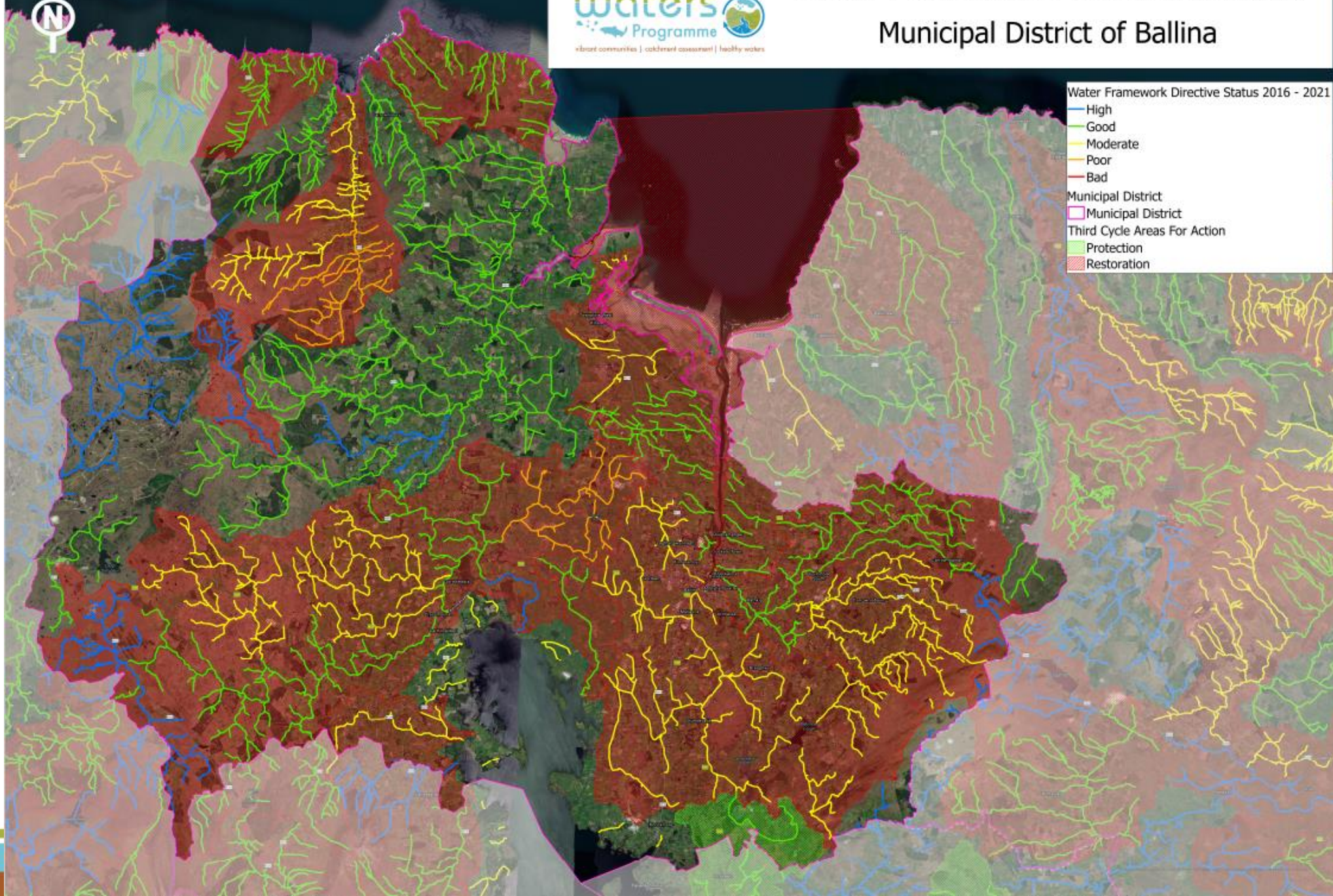
- High
- Good
- Moderate
- Poor
- Bad

Municipal District

Municipal District

Third Cycle Areas For Action

- Protection
- Restoration

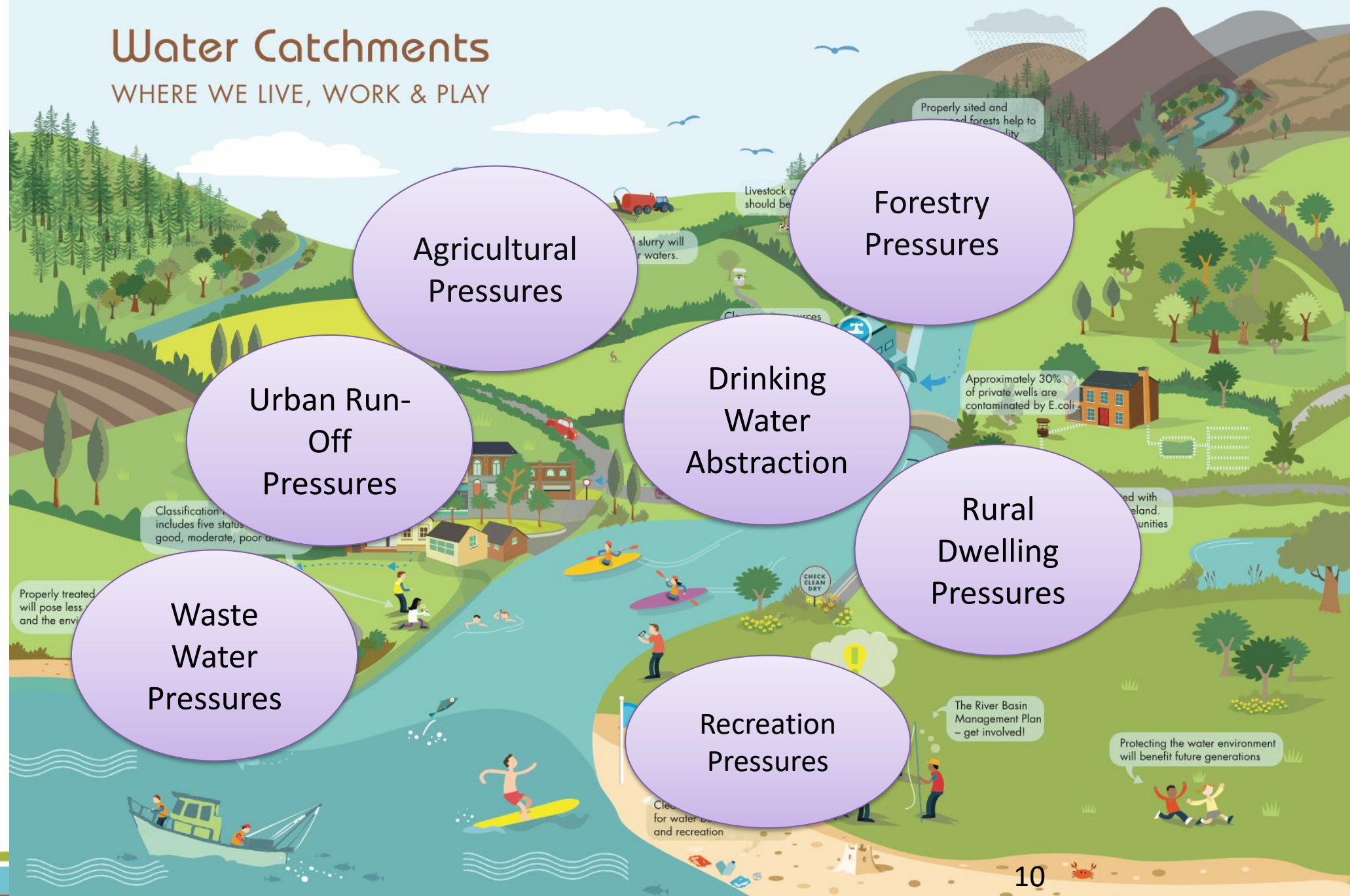


What impacts our water?



# Water Catchments

WHERE WE LIVE, WORK & PLAY



Agricultural Pressures

Forestry Pressures

Urban Run-Off Pressures

Drinking Water Abstraction

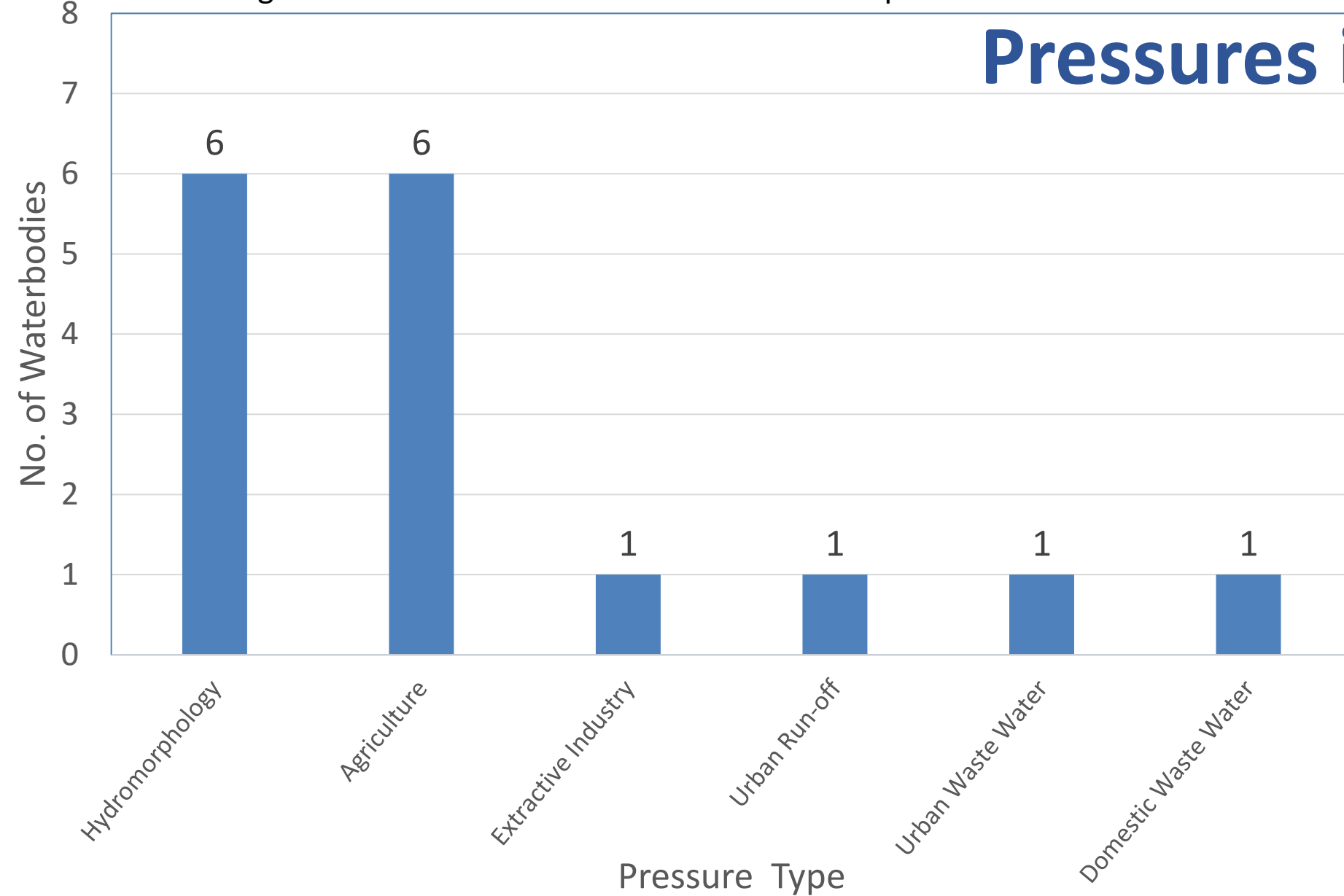
Rural Dwelling Pressures

Waste Water Pressures

Recreation Pressures

Significant Pressure in At risk waters in Municipal District of Ballina

# Pressures in Ballina MD



- Hydromorphology
  - Shape and flow
- Agriculture
  - Pasture



What are we are doing



- Areas for Action

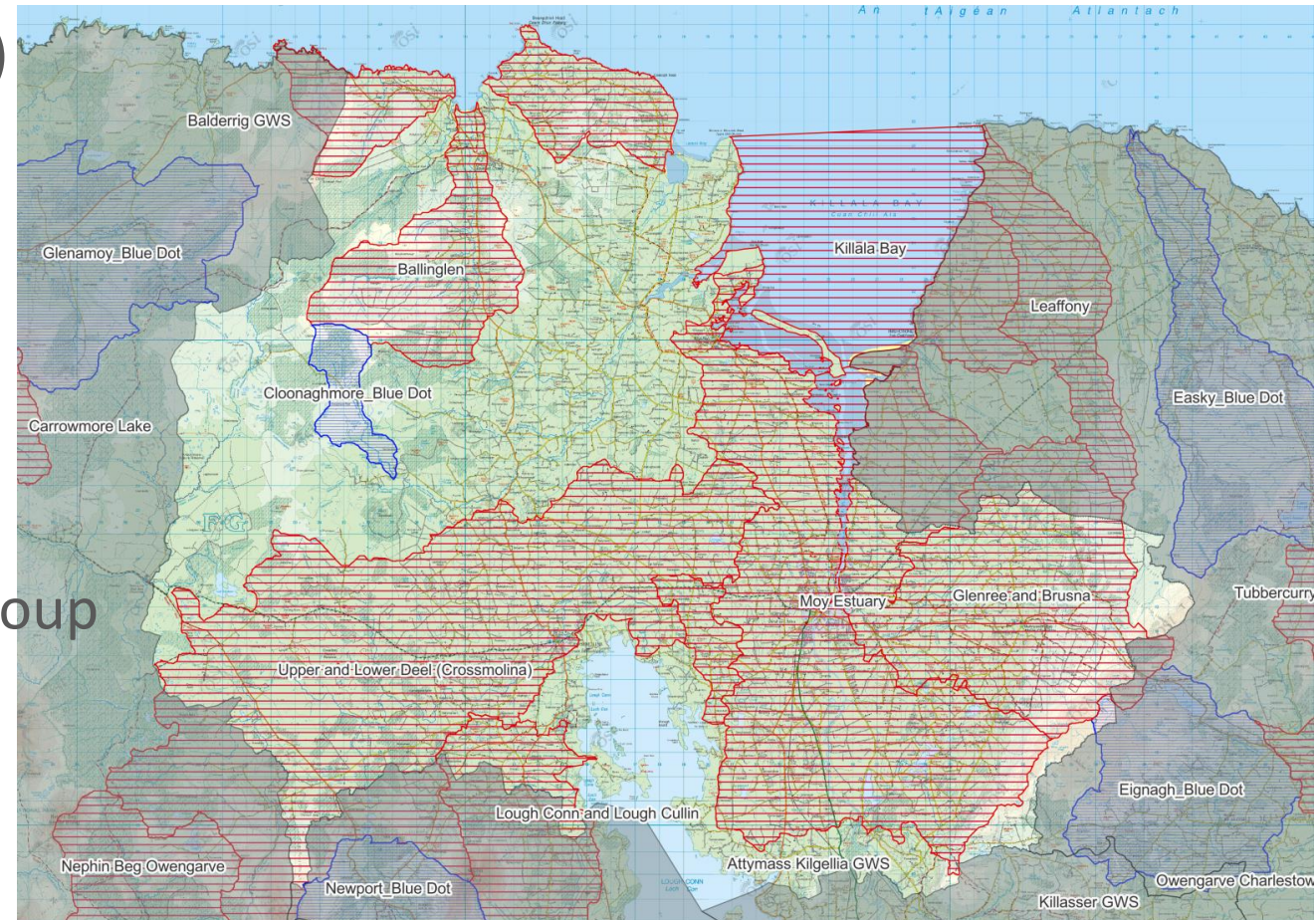
- Detailed assessment of water quality

- 7 LAWPRO Areas for Action (large red areas)

- Upper and Lower Deel
- Killala Bay
- Moy Estuary
- Lough Conn and Cullin
- Glenree and Brusna
- Ballinglen
- Cloonaghmore Blue Dot

- 1 areas led by the National Federation of Group Water Schemes)

- Attymass Kilgellia GWS



# Local Catchment Assessment Finding issues on the ground



Field chemistry and field observations



Biological sampling - invertebrates



River walks



Chemistry sampling



Biological sampling - vegetation

# Referrals

- When we find issues, we let people know
  - Hydromorphology – OPW, Local Authority, IFI
  - Agriculture, we refer to ASSAP
  - Licensed discharges, we refer to Local Authority, Environmental Protection Agency , Uisce Éireann etc.
- Measures can be used then to address the impact



# What is The ASSAP?

- Agricultural Sustainability Support and Advisory Programme
- Focus is on improving water quality in Priority Areas for Action (PAA)
- Provides free & confidential farm advice and acceptance is voluntary
- Industry, government, farm orgs collaboration
- 44 Advisors - 20 Teagasc, 24 from Dairy Co-ops
- Work in collaboration with Local Authority Waters Programme (LAWPRO)
- LAWPRO – scientific investigation; LCA, desk study, chemical, biological, hydro morphology etc., assess streams
- Provide referrals to advisors to focus farm visits



CARBERY



An Roinn Tithíochta,  
Rialtais Áitiúil agus Oidhreacht  
Department of Housing,  
Local Government and Heritage

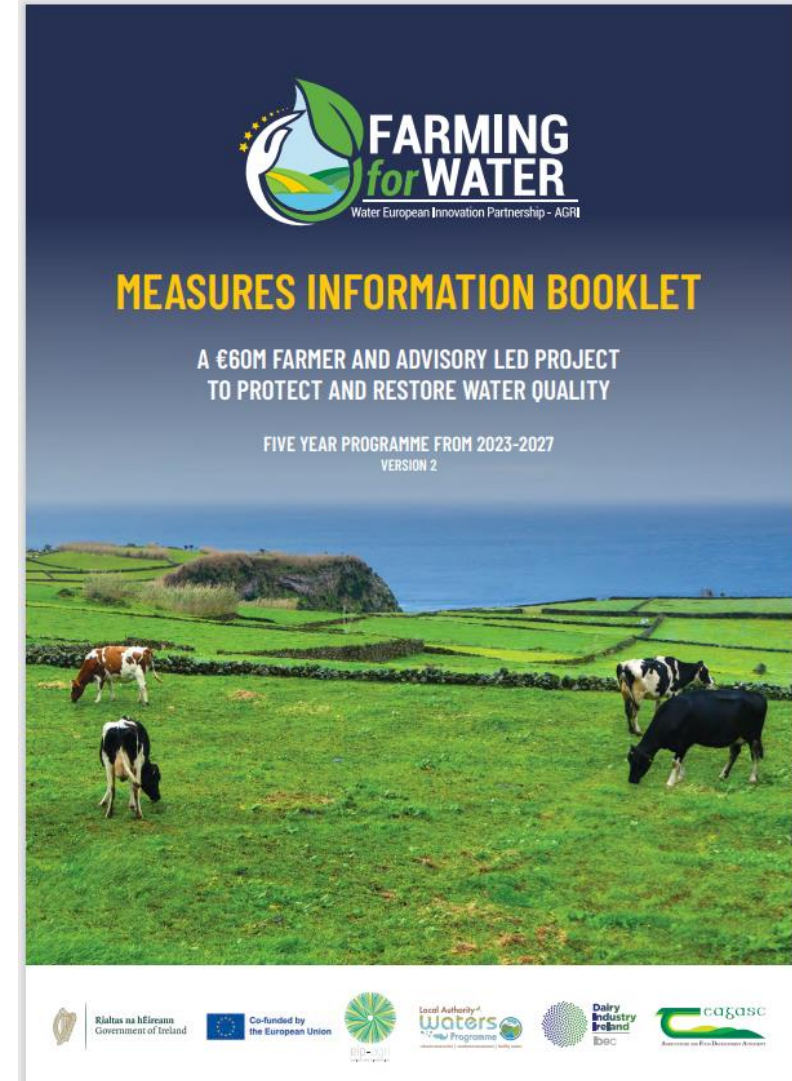


An Roinn Talmhaíochta,  
Bia agus Mara  
Department of Agriculture,  
Food and the Marine



**The Farming for Water project**, aims to tackle water quality issues while promoting sustainable agricultural practices and delivering environmental benefits.

- **Collaboration & Innovation:** The project brings together farmers, researchers, policymakers, and other stakeholders to co-develop practical, scalable solutions that go beyond regulatory requirements.
- **Funding & Support:** With €50 million from DAFM and the European Commission for farmer payments and €10 million in administrative support from DHLGH, the initiative is well-funded to support on-the-ground actions.
- **Leadership & Timeline:** Led by the Local Authority Waters Programme (LAWPRO) in partnership with Teagasc and Dairy Industry Ireland, the programme launched in March 2024 and will run until 2027, engaging a wide network of collaborators including other supporting stakeholders.



## Key Points

### Prioritisation of Entry into the Project

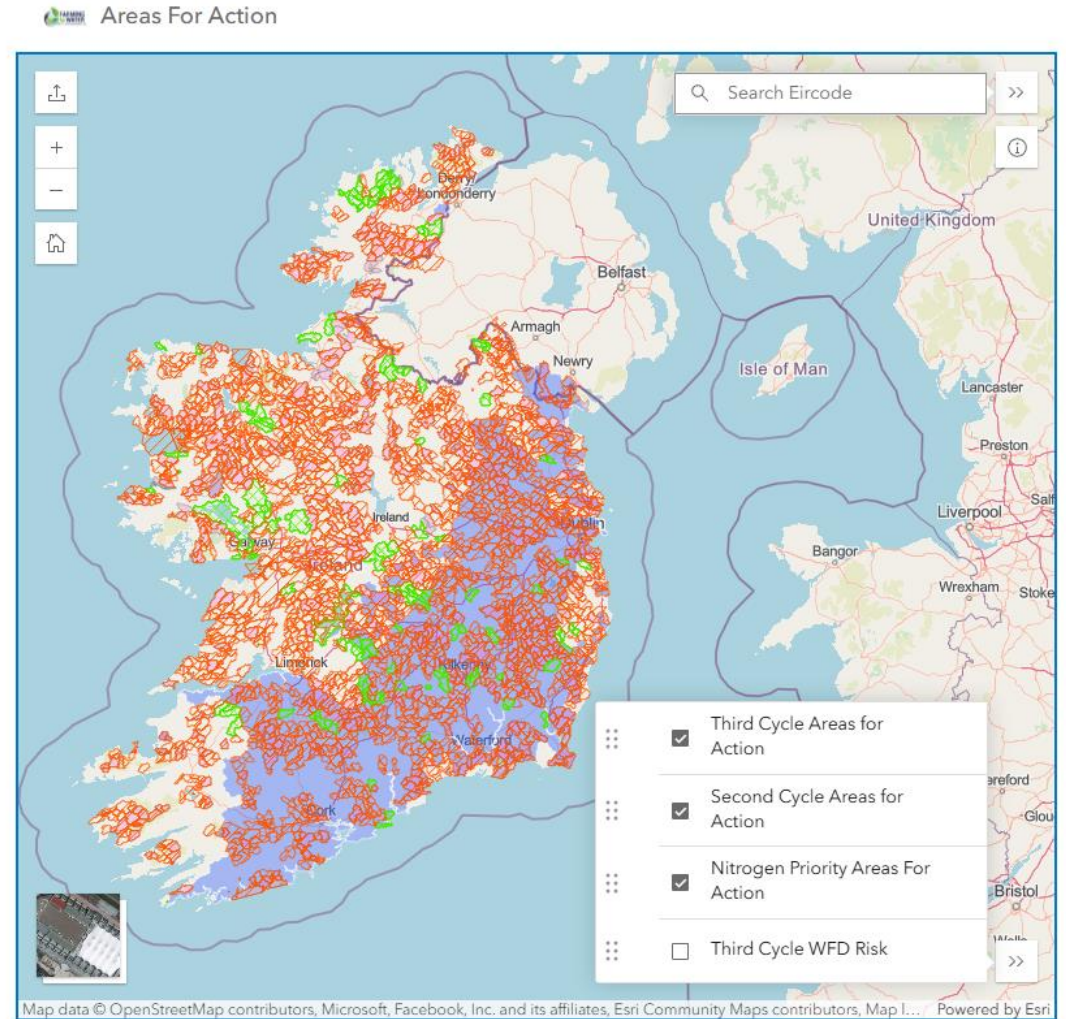
-focus on specific areas based on risk levels.

**Mapped Areas for Action:** Selected areas [Farming for Water website](https://farmingforwater.ie/).

**Risk-Based Selection:** Entry into the project is guided by the agricultural sustainability support and advisory programme and is based scientific assessments of agricultural pressures on water bodies.

**Research projects** being developed which will validate the measures being tested as part of the Farming for Water EIP.

<https://farmingforwater.ie/>



# Irish State Agencies involved in Water Management...



# Community Engagement

- Eanna Hyland is the Community Water Officer for Mayo
- Our work with Communities
  - Funding Community Water Development Fund
  - Catchment Support Fund
  - Small Grants
  - Capacity Building
  - Project Delivery
  - Citizen Science Stream Index
  - Talk to Eanna for more info



Collaboration is key to success



Q and A



# Meet the room

- LAWPRO – Eanna, Ailbhe
- ASSAP/Farming for Water EIP – Peter Comer
- Mayo County Council – Killian Farrell

[www.lawwaters.ie](http://www.lawwaters.ie)

[www.catchments.ie](http://www.catchments.ie)



## Contact Details

- Senior Catchment Scientist LAWPRO
    - Ailbhe Douglas [adouglas@lawwaters.ie](mailto:adouglas@lawwaters.ie)
  - Senior Executive Scientist Mayo County Council
    - Killian Farrell [kfarrell@mayococo.ie](mailto:kfarrell@mayococo.ie)
  - Community Water Officer LAWPRO
    - Eanna Hyland [ehyland@lawwaters.ie](mailto:ehyland@lawwaters.ie)
  - ASSAP advisor for the area
    - Peter Comer [Peter.Comer@teagasc.ie](mailto:Peter.Comer@teagasc.ie)
- 