



PROTECTING AND RESTORING KERRY'S NATURAL WATERS

Listowel - Community Information Meeting

Kerry Writers Museum, Listowel

10th June 2025

Co-funded by
the European Union

Waters of **LIFE**



Meeting structure

- Presentation
 - 15 - 20 minutes
- Questions and Answers
 - 10 - 20 minutes
- Stand Engagement
 - 30 - 60 minutes
- We have a **sign-up** sheet at the LAWPRO table if you want to be kept up to date with our work e.g. newsletter

Local Authority Waters Programme (LAWPRO)

- Shared Service across all Local Authorities
- 5 Regions – Border, West, Southwest, Southeast, and Midlands and east
 - (Clare, Limerick, Kerry and Cork = South-western region)
- 2016 – Communities team
- 2018 – Catchment Assessment team
- 2019 – Blue Dot Catchments Programme
- 2024 – Farming for Water EIP

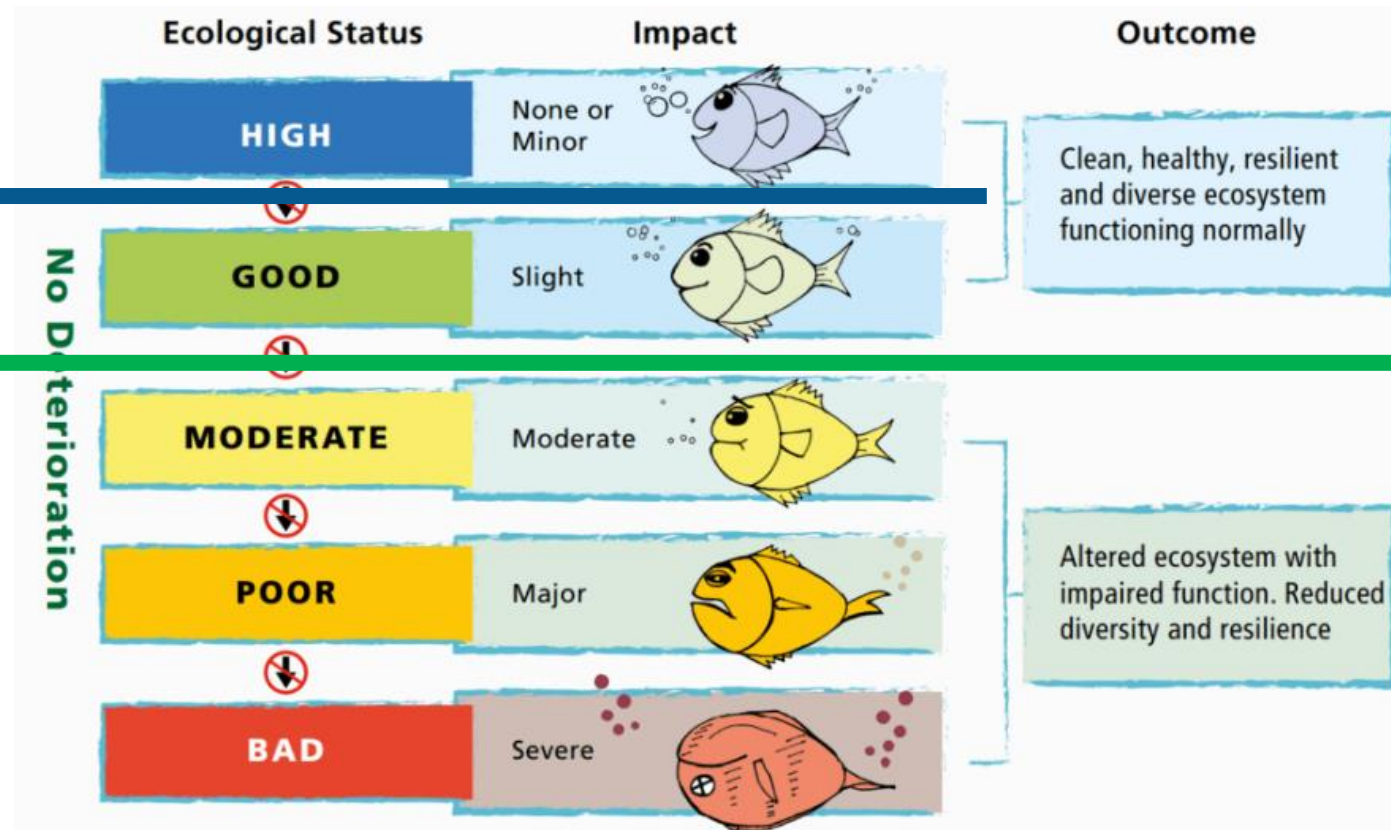


What do we mean by water quality?

EU Water Framework Directive

No Decline –
Blue Dots

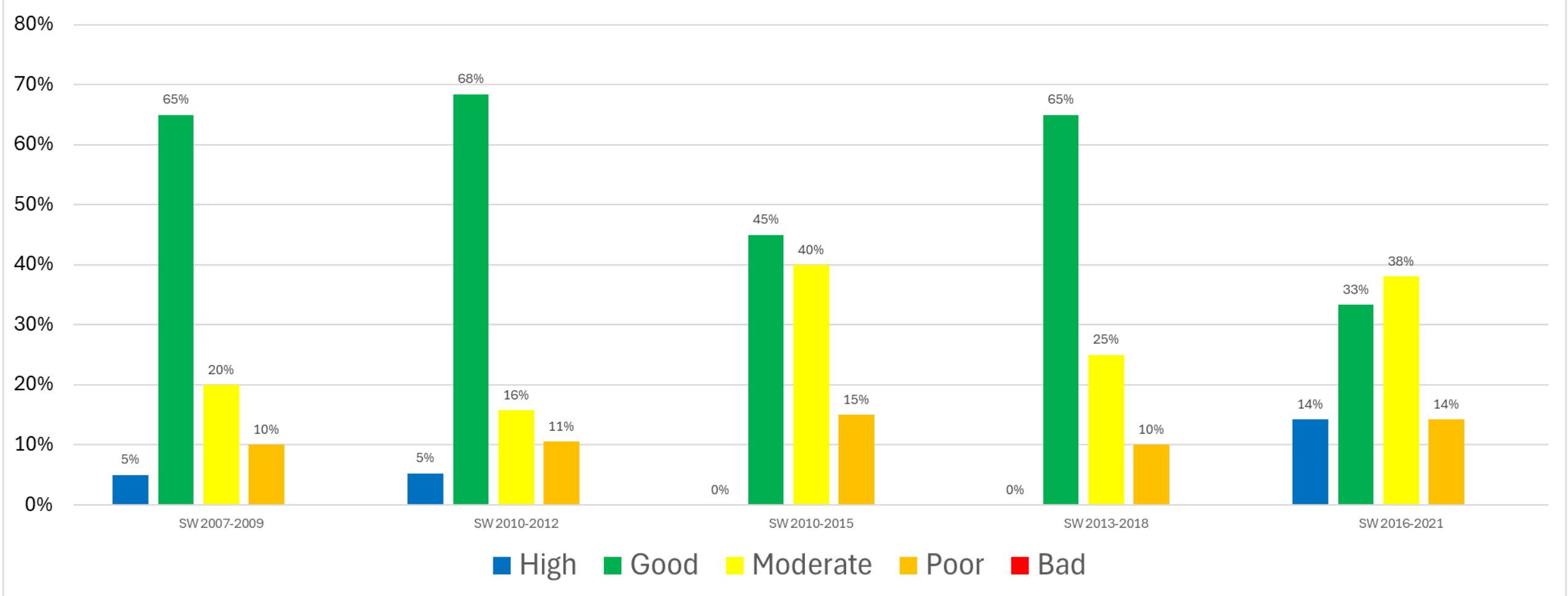
At least Good



All surface waters must achieve at least Good Ecological Status by 2027

Water quality in Listowel Municipal District

WFD Status (%) of Rivers in Municipal District of Listowel - Monitored only



Water Framework Directive Status

Municipal District of Listowel

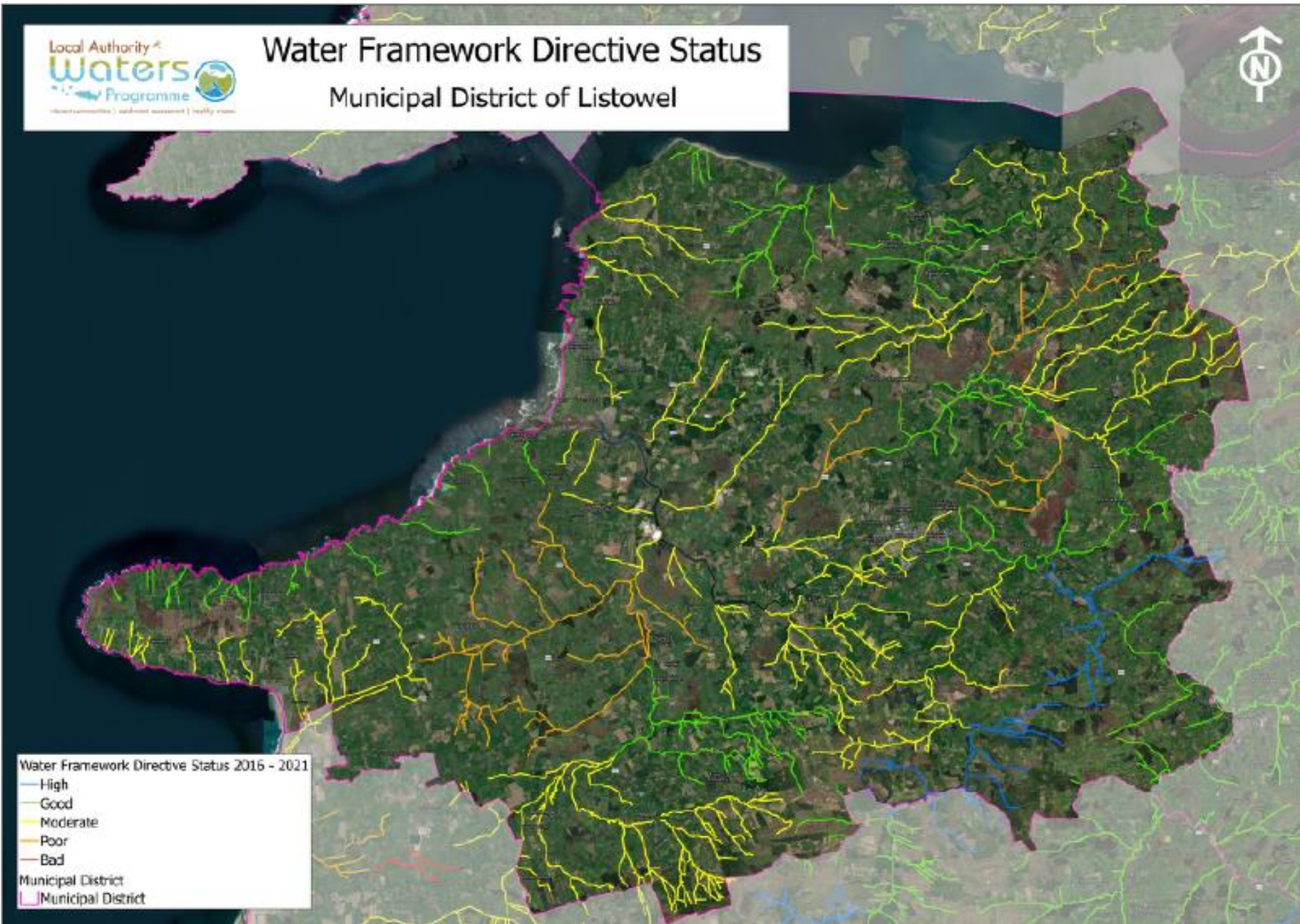


Water Framework Directive Status 2016 - 2021

- High
- Good
- Moderate
- Poor
- Bad

Municipal District

- Municipal District

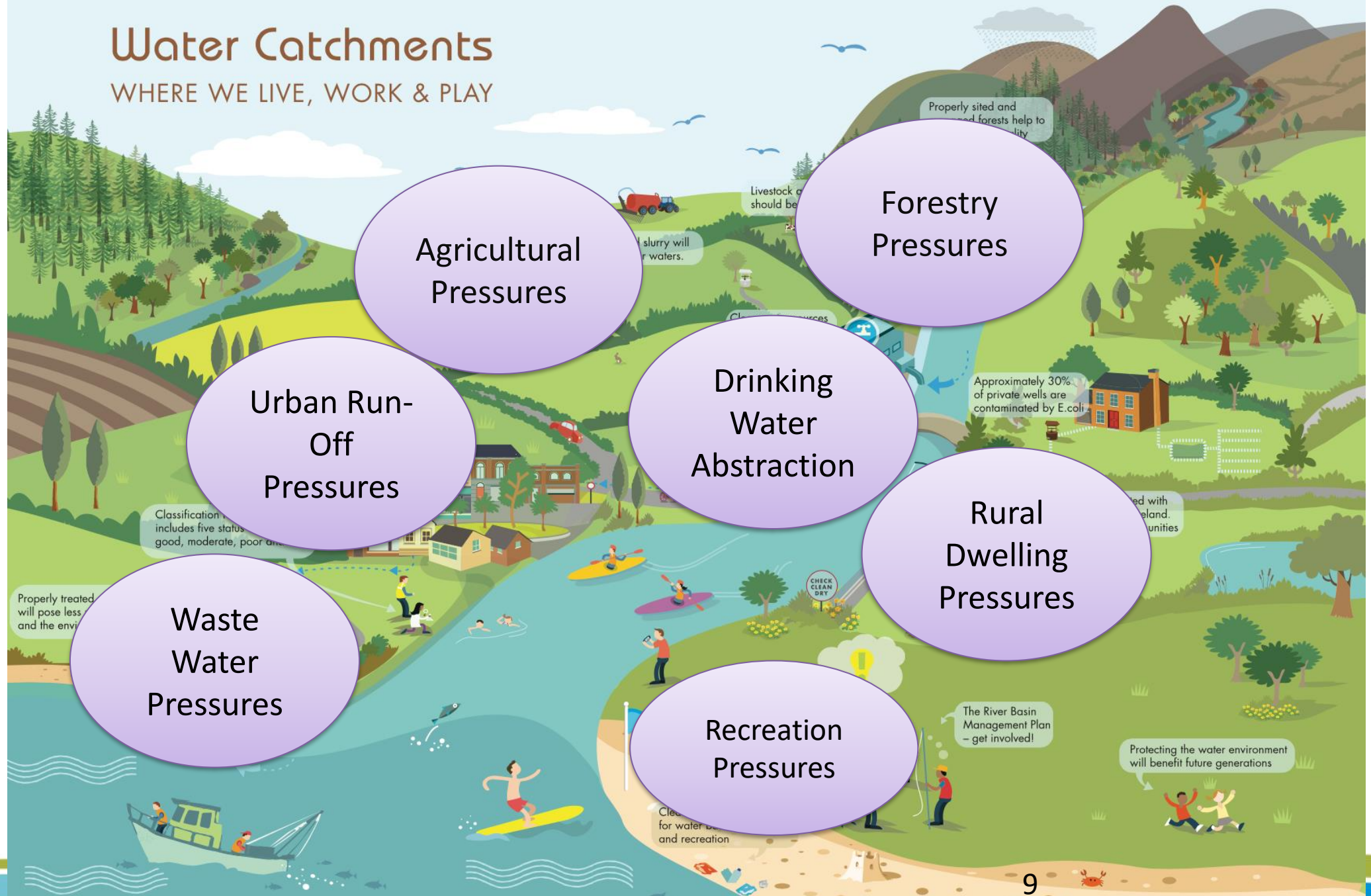


What impacts our water?



Water Catchments

WHERE WE LIVE, WORK & PLAY



Agricultural Pressures

Forestry Pressures

Urban Run-Off Pressures

Drinking Water Abstraction

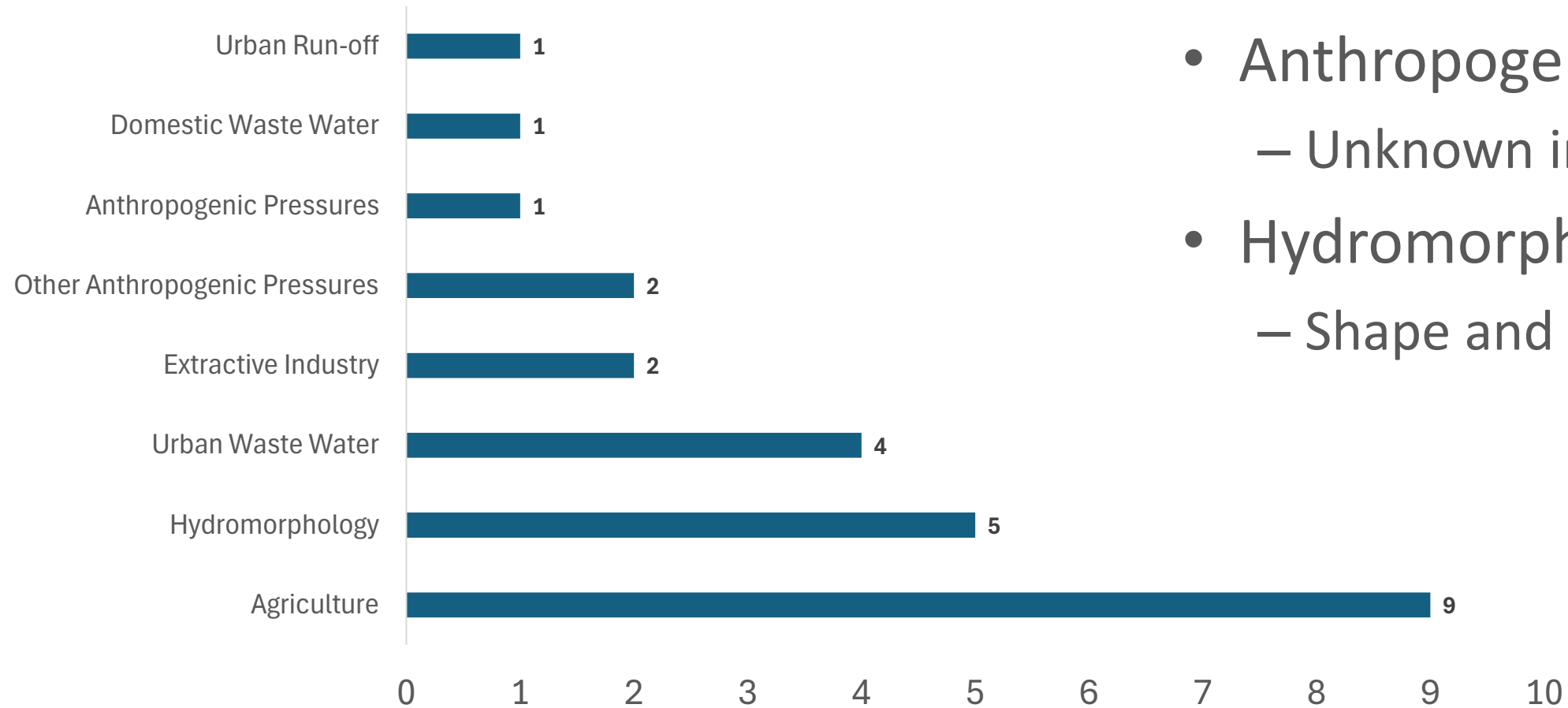
Rural Dwelling Pressures

Waste Water Pressures

Recreation Pressures

Pressures in Listowel Municipal District

Significant Pressure in At risk waters in Municipal District of Listowel



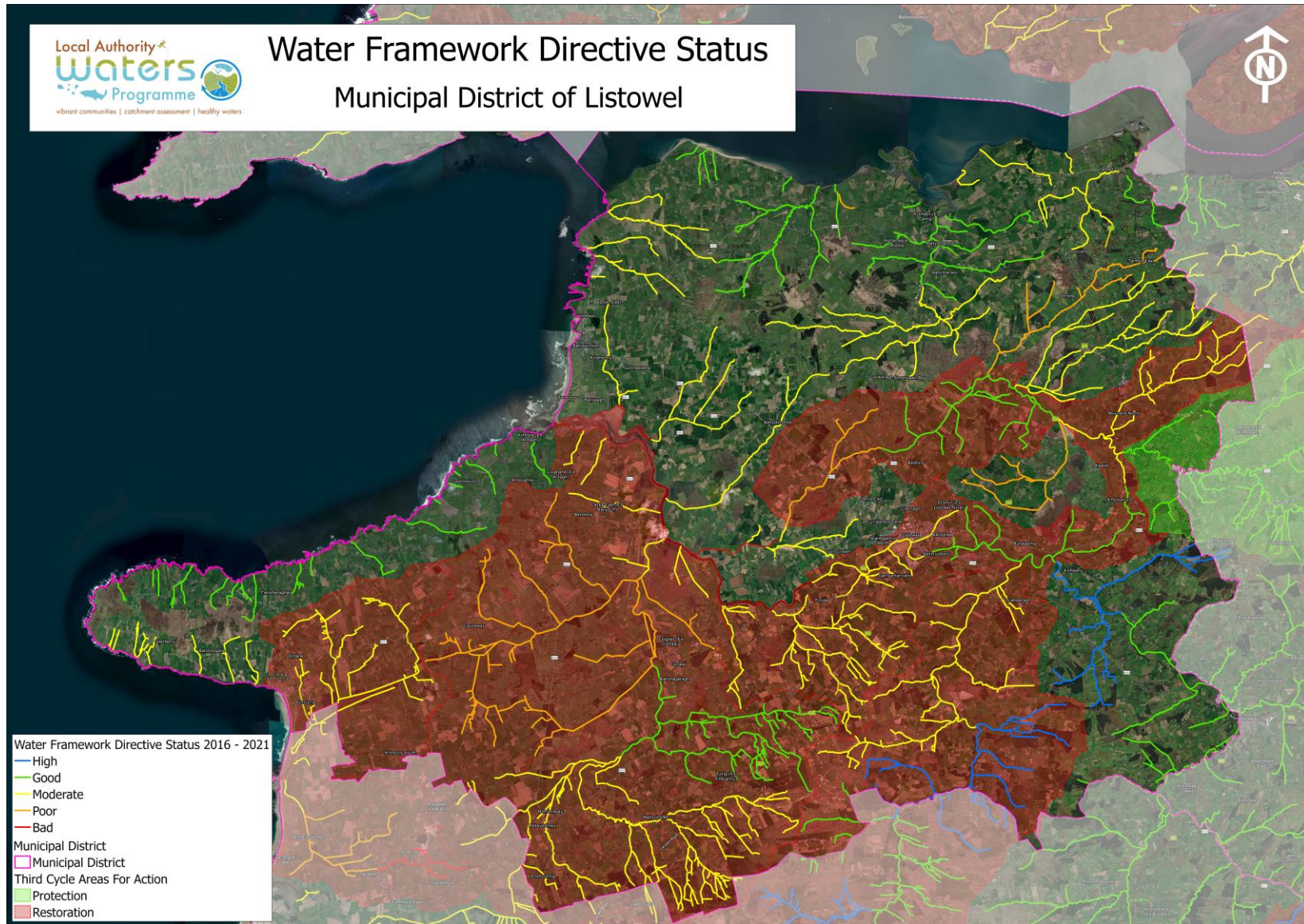
- Anthropogenic Pressures
 - Unknown in most cases
- Hydromorphology
 - Shape and flow



What are we are doing



- Priority Areas for Action
- Detailed assessment of water quality
- Four areas intersect Listowel
- 16 of 38 Rivers are in an Area for Action
- Mostly LAWPRO led – red areas



Local Catchment Assessment Finding issues on the ground



Field chemistry and field observations



Biological sampling - invertebrates



River walks



Chemistry sampling



Biological sampling - vegetation

Referrals

- When we find issues, we let people know
 - Agriculture, we refer to ASSAP
 - Forestry, we refer to Forest Service
 - Licensed discharges, we refer to Local Authority or Environmental Protection Agency etc.
- Measures can be used then to address the impact



What is The ASSAP?

- Agricultural Sustainability Support and Advisory Programme
- Focus is on improving water quality in Priority Areas for Action (PAA)
- Provides free & confidential farm advice and acceptance is voluntary
- Industry, government, farm orgs collaboration
- 44 Advisors - 20 Teagasc, 24 from Dairy Co-ops
- Work in collaboration with Local Authority Waters Programme (LAWPRO)
- LAWPRO – scientific investigation; LCA, desk study, chemical, biological, hydro morphology etc., assess streams
- Provide referrals to advisors to focus farm visits



CARBERY



An Roinn Tithíochta,
Rialtais Áitiúil agus Oidhreacht
Department of Housing,
Local Government and Heritage

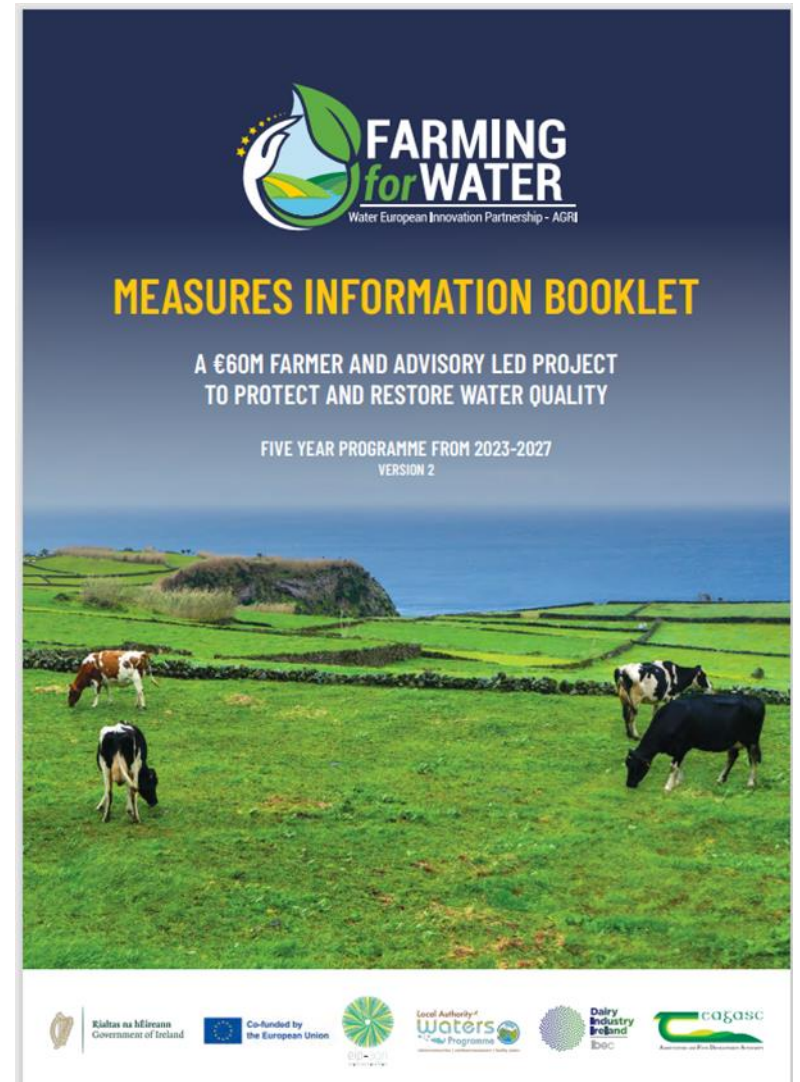


An Roinn Talmhaíochta,
Bia agus Mara
Department of Agriculture,
Food and the Marine



Farming for Water EIP

- Aims to tackle water quality issues while promoting sustainable agricultural practices and delivering environmental benefits
 - Led by LAWPRO in partnership with Teagasc and Dairy Industry Ireland
 - Launched in March 2024 and will run until end 2027
- Collaboration & Innovation
 - Farmers, researchers, policymakers, and others to co-develop practical, scalable solutions beyond regulatory requirements
- Funding & Support
 - €50 million from DAFM and the EC
 - €10 million in administrative support from DHLGH



Key Points

Prioritisation of Entry into the Project

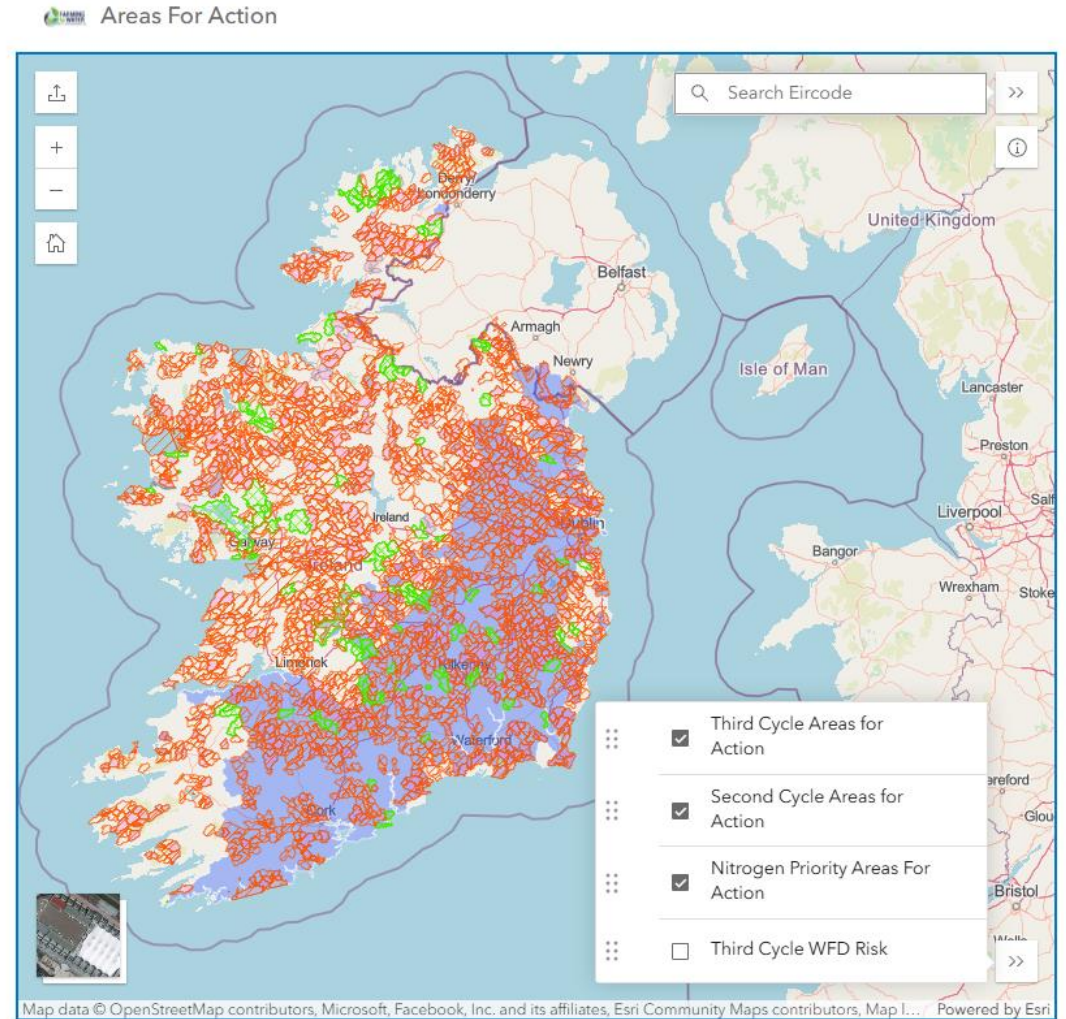
-focus on specific areas based on risk levels.

Mapped Areas for Action: Selected areas [Farming for Water website](https://farmingforwater.ie/).

Risk-Based Selection: Entry into the project is guided by the agricultural sustainability support and advisory programme and is based scientific assessments of agricultural pressures on water bodies.

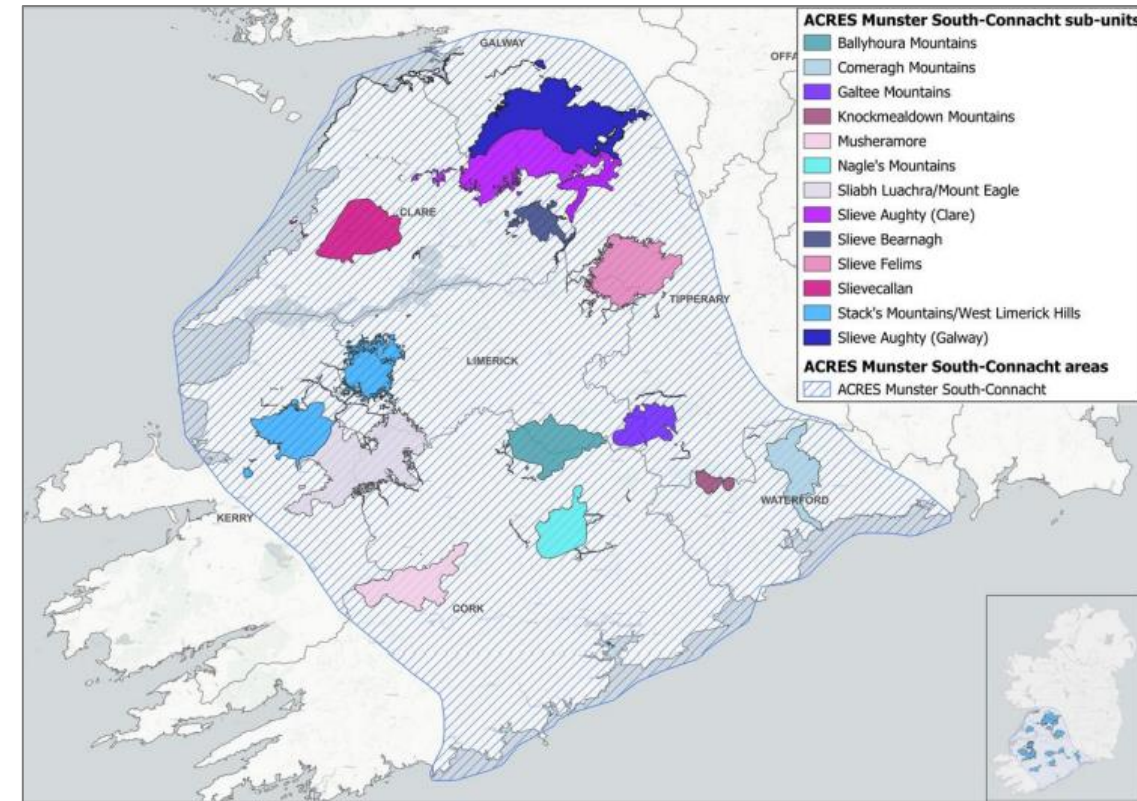
Research projects being developed which will validate the measures being tested as part of the Farming for Water EIP.

<https://farmingforwater.ie/>

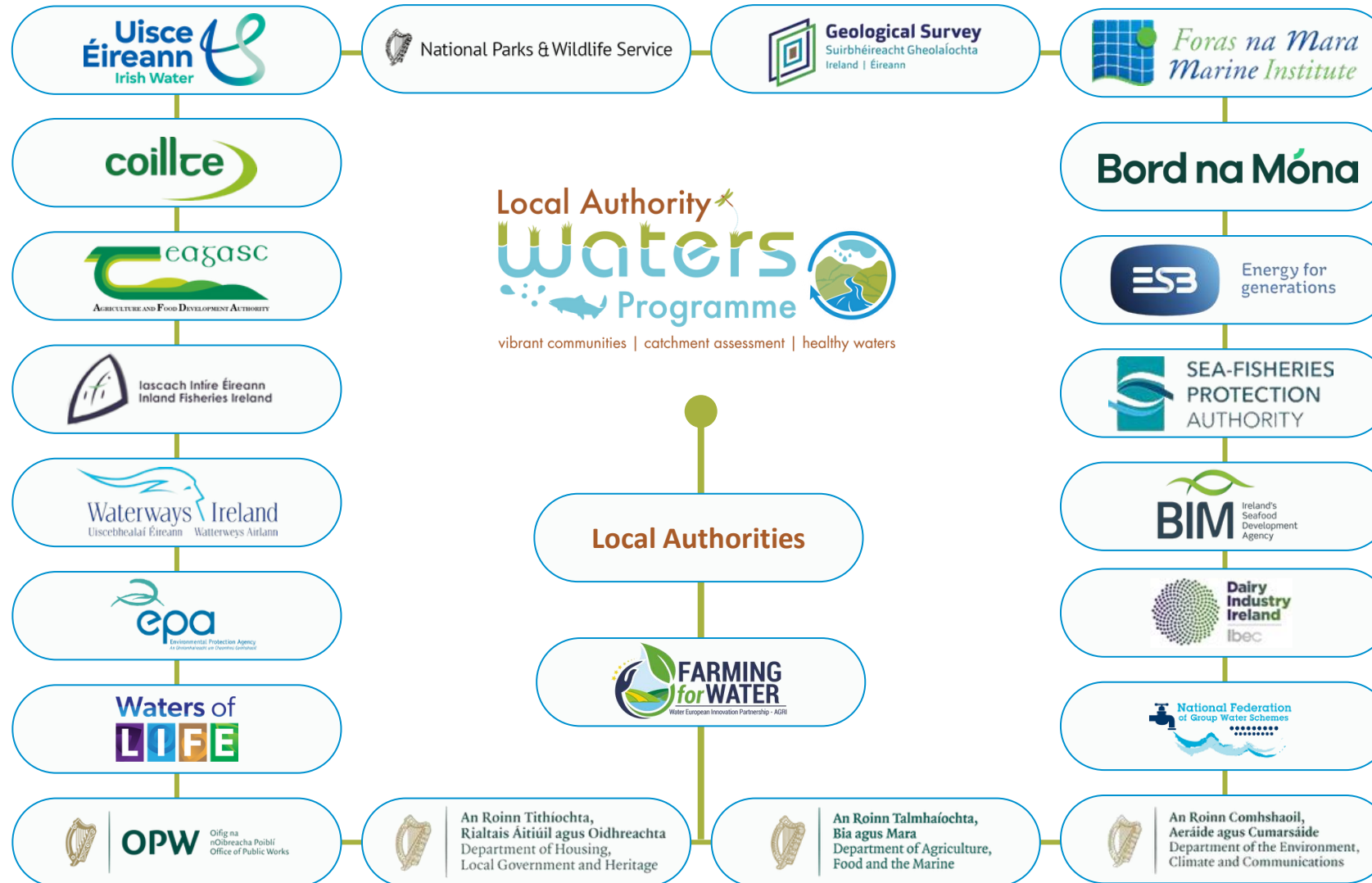


ACRES Cooperation Projects

- [ACRES Co-operation approach](#), available to farmers in eight high-priority geographical areas, who opt to undertake measures, as well as bespoke farm, and landscape actions.
- Part of Listowel is in an Area.
- <https://acresireland.ie/munster-south-connacht/>



Who's involved in Water?



Community Engagement

Bláthnaid O'Loughlin is the Community Water Officer for Kerry

- Our work with Communities
 - Engaging groups and communities
 - Project Delivery
 - Capacity Building
 - Education
 - Citizen Science
 - Blue Dot awareness
- Funding Opportunities
 - Community Water Development Fund
 - Catchment Support Fund
 - Small Grants and Events Scheme

Talk to Bláthnaid for more info





Asdee



Community Development

Community Projects

Asdee Development Assoc

From the Irish Eas Daoi, meaning the black waterfall

Very active in sustainability and Biodiversity projects

- Rainwater harvesting
- Pollinator planting on Shannon way
- Community garden

Supported by LAWPRO - River Walk and park project

- CWDF 2021 – Feasibility Study
- CWDF 2022 – Environmental Impact and Structural Survey
- CWDF 2023 – EIA for River walk
- CWDF 2024 – Design drawings for planning submission



Asdee River Walk and
Recreational Park

Feasibility Analysis 2021



ECOLOGICAL IMPACT ASSESSMENT



Prepared by
Thomas Sheehan MSc
on behalf of
Asdee Community Development Association
for the development of
a Recreation Park Trail River Walk at Asdee Village, Co. Kerry

01 August, 2023
SHEEHAN CONSULTANCY
Raglan, Moyvane North,
Listowel,
County Kerry
V31 VK20
sheehan.consultancy@gmail.com

November, 2024

KNOCKNAGOSHEL WATER MANAGEMENT REPORT

*Overview of Recommendations on Habitat and
Water Quality Enhancement Options
for Knocknagoshel Tidy Towns*



Community Projects

Knocknagoshel Environment and Angling Association
Active and water focused community development
organisation

- Biodiversity enhancement
- Community garden
- Education Projects
- Bog walkway

Supported by LAWPRO

- CWDF 2023 - Restoration of 'Aggie's Inch' riverside area
- CWDF 2024 – Knocknagoshel Water Management Study with FH Wetlands
- CSF 2025 – Successful application to increase capacity for implementing water projects such as village SUDS and community ICW project

Mainstreaming of Nature-based Solutions (NbS)

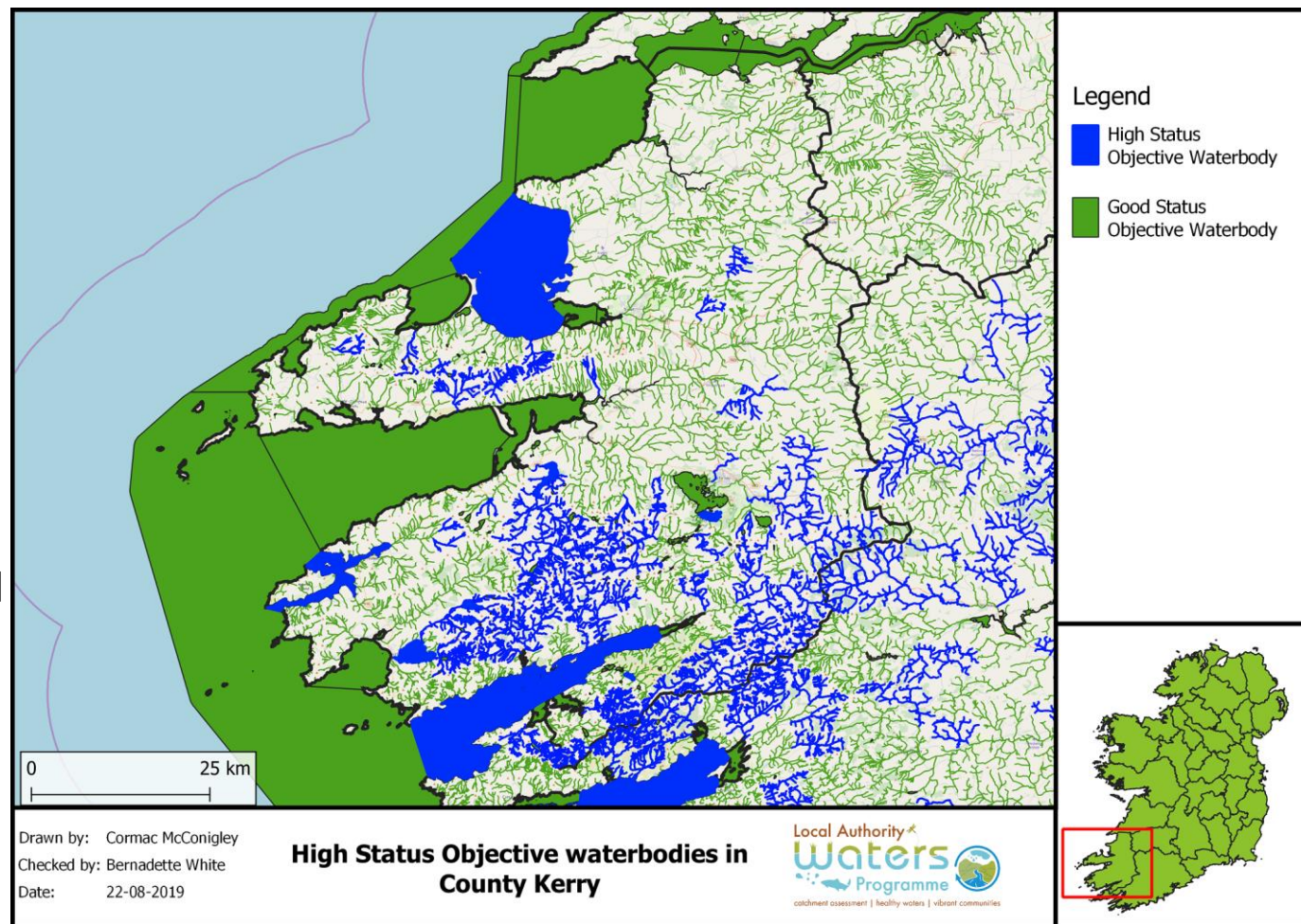
- 2 No. Nbs Engineers appointed in LAWPRO working in this area since 2024:
 - Tom Brennan SEE Tbrennan@lawaters.ie
 - Eamonn O’Connell SEE eoconnell@lawaters.ie
- Local Authority Engagement / Supports include
 - *Guidance Document for Planners Developers & Developer Agents*
- *Rainwater Management Plan – Guidance for Local Authorities 2024*
- Progression of National Strategy for NBS





Blue Dot Catchment Programme

- Blue Dots are waterbodies that **SHOULD** achieve high ecological status i.e. WFD objective is high status
 - Blue Dots = High Status Objective
- Currently there are 402 Blue Dots
 - Present in most counties – 68 in Kerry e.g. Smearlagh_020 near Lyrecrumpane
 - Majority along the Western seaboard, Wicklow and mountainous areas of the Midlands and South



Collaboration is key to success



Q and A



Meet the room

- LAWPRO – Bláthnaid, Niamh and DJ Lane
- ASSAP/Farming for Water EIP – James Lyons and Mairead Shore
- ACRES – Padraig Cronin
- Kerry County Council – Mick Boyce
- IFI – Jane Gilleran
- NPWS – Séan O’Brien

www.lawwaters.ie

www.catchments.ie



Contact Details

- Community Water Officer
 - Bláthnaid O’Loughlin - boloughlin@lawaters.ie
- Catchment Manager
 - Niamh Rogan – nrogan@lawaters.ie
- ASSAP advisor for the area
 - James Lyons - james.lyons@teagasc.ie