




Athlone MD - Community Information Meeting

TAUGHMACONNELL

27th May 2025

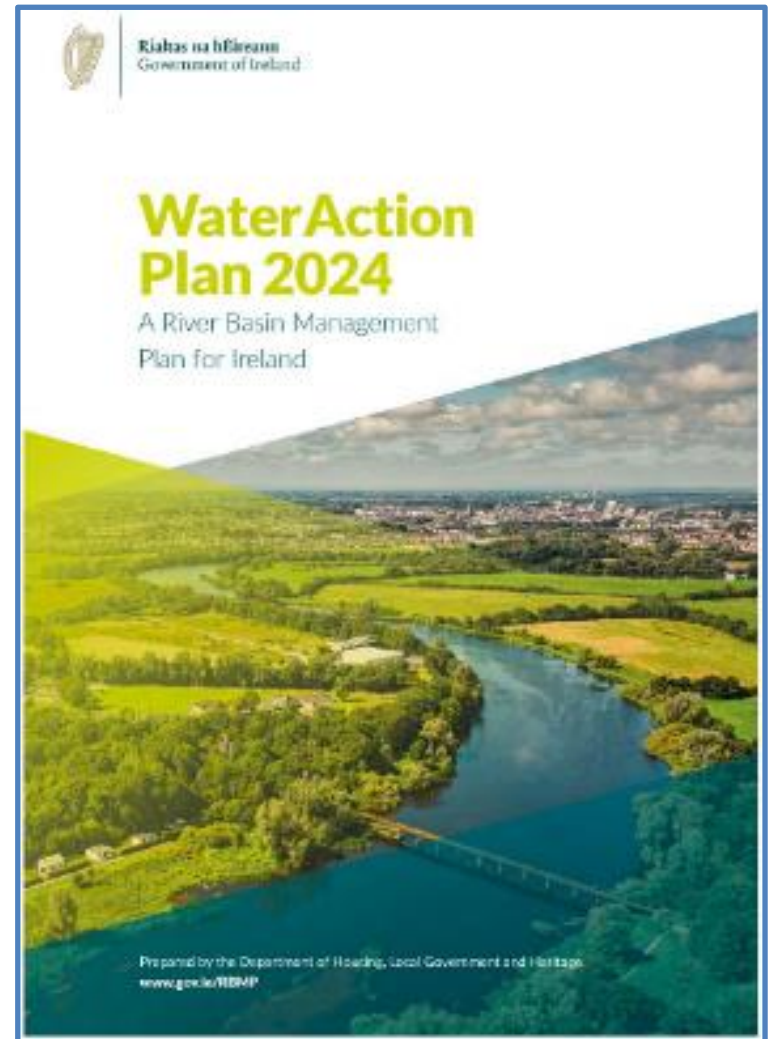
Meeting structure

- Presentation
 - 15 - 20 minutes
 - Questions and Answers
 - 10 - 20 minutes
 - Stand Engagement
 - 30 - 60 minutes
 - We have a **sign-up** sheet at the LAWPRO table if you want to be kept up to date with our work e.g. newsletter
- 

Water Action Plan 2024

Launched September 2024

- Government commitment to protecting & restoring Ireland's natural waters by complying with the requirements of the Water Framework Directive
- Accelerate the identification and implementation of the **right measures in the right places** to both restore and protect all water bodies



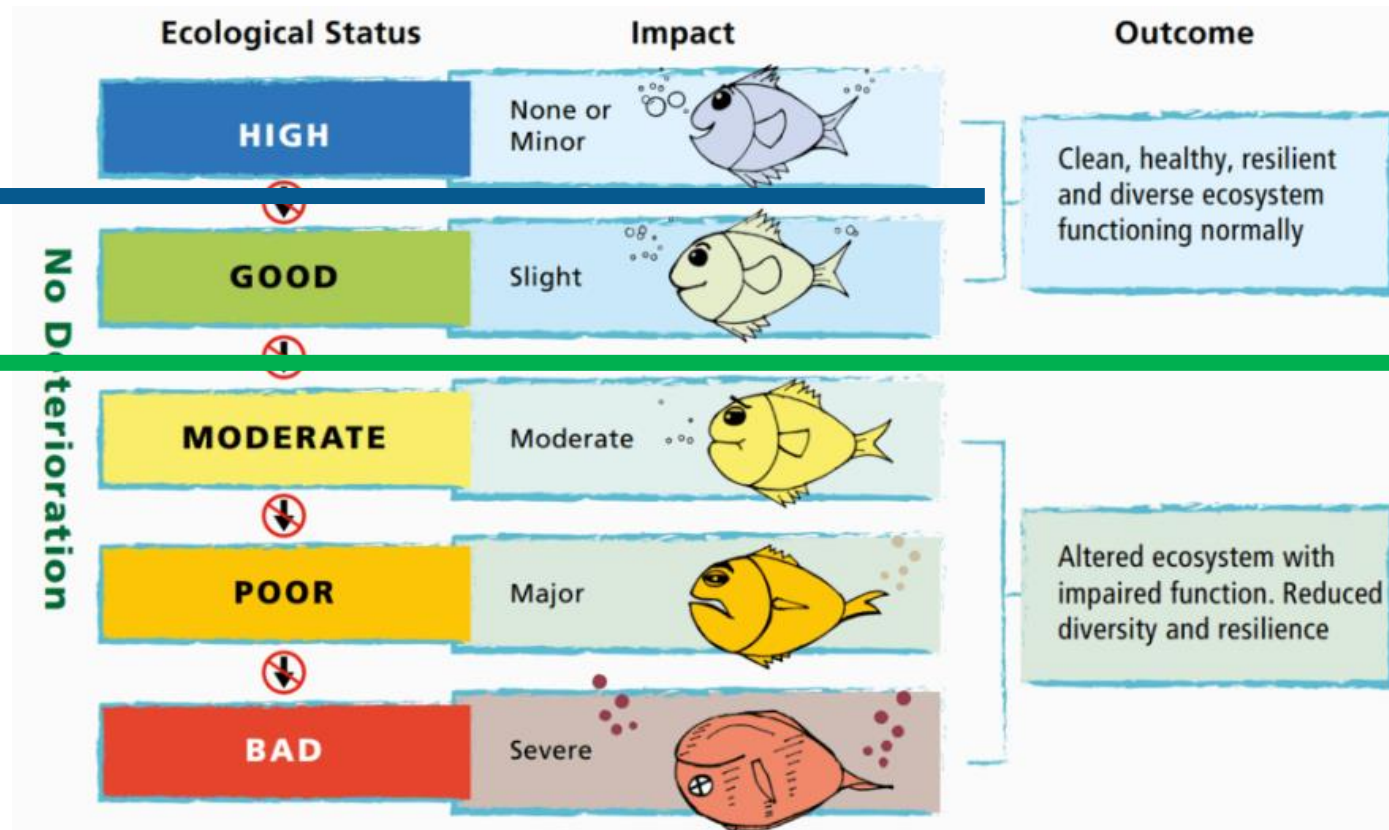
gov.ie - River Basin Management Plan 2022 - 2027

What do we mean by water quality?

EU Water Framework Directive

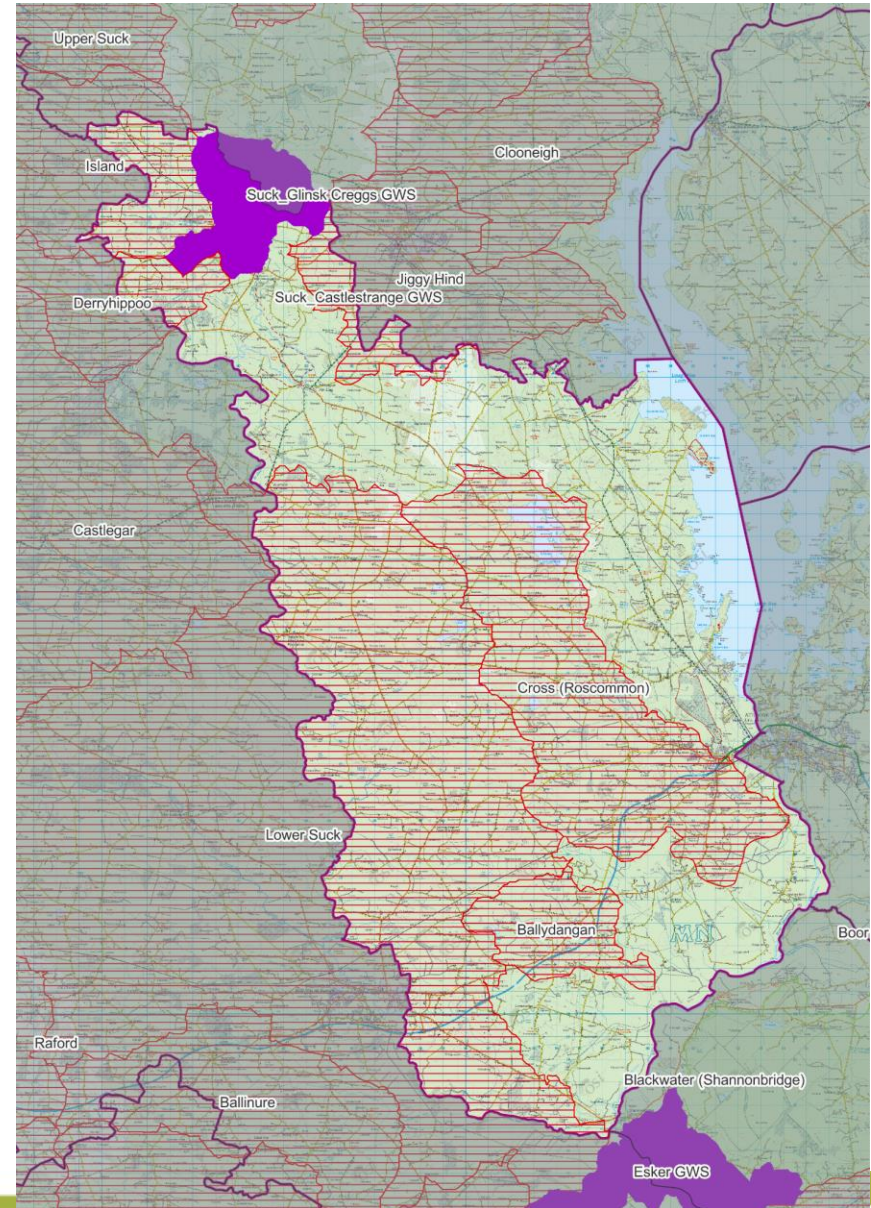
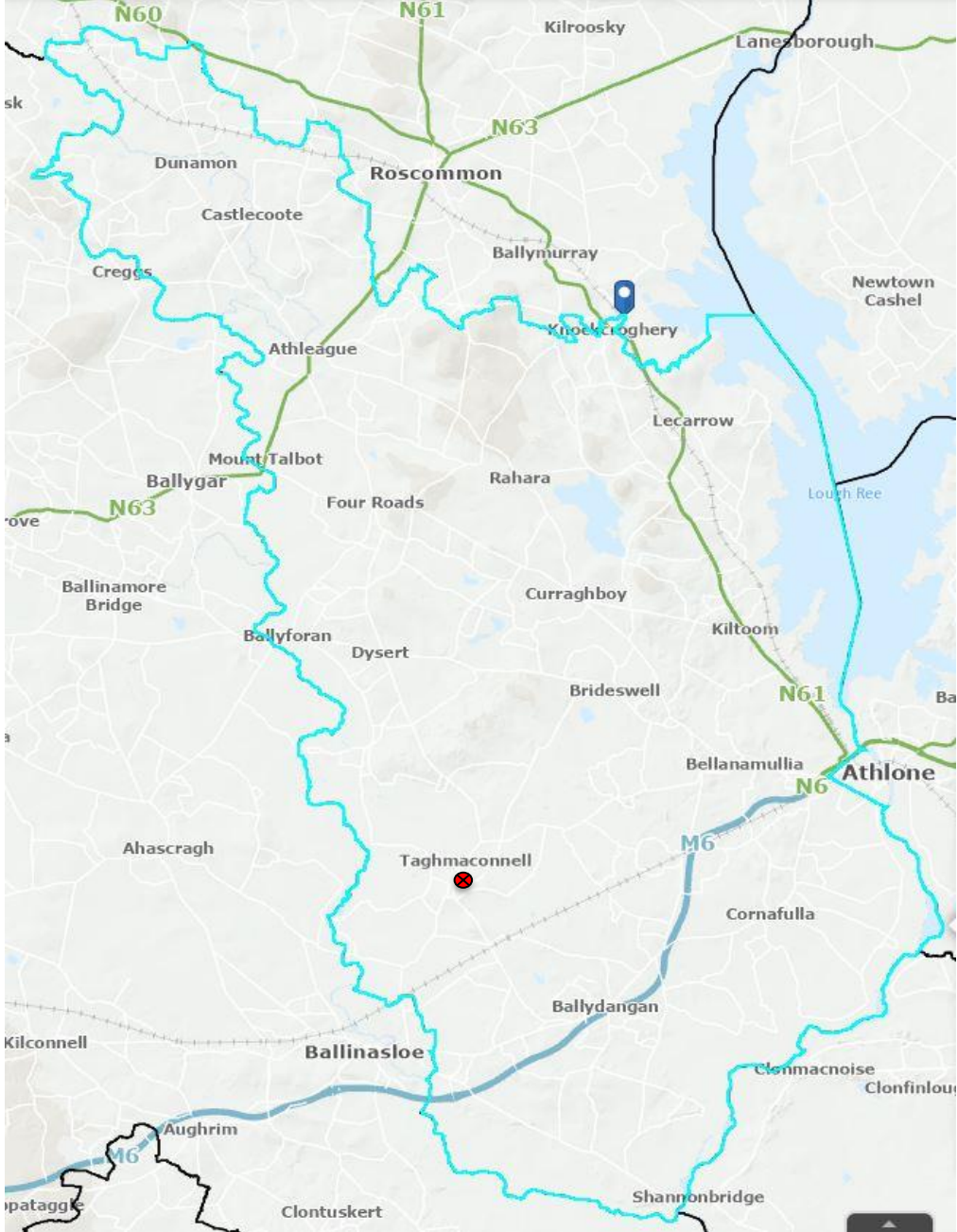
No Decline –
Blue Dots

At least Good



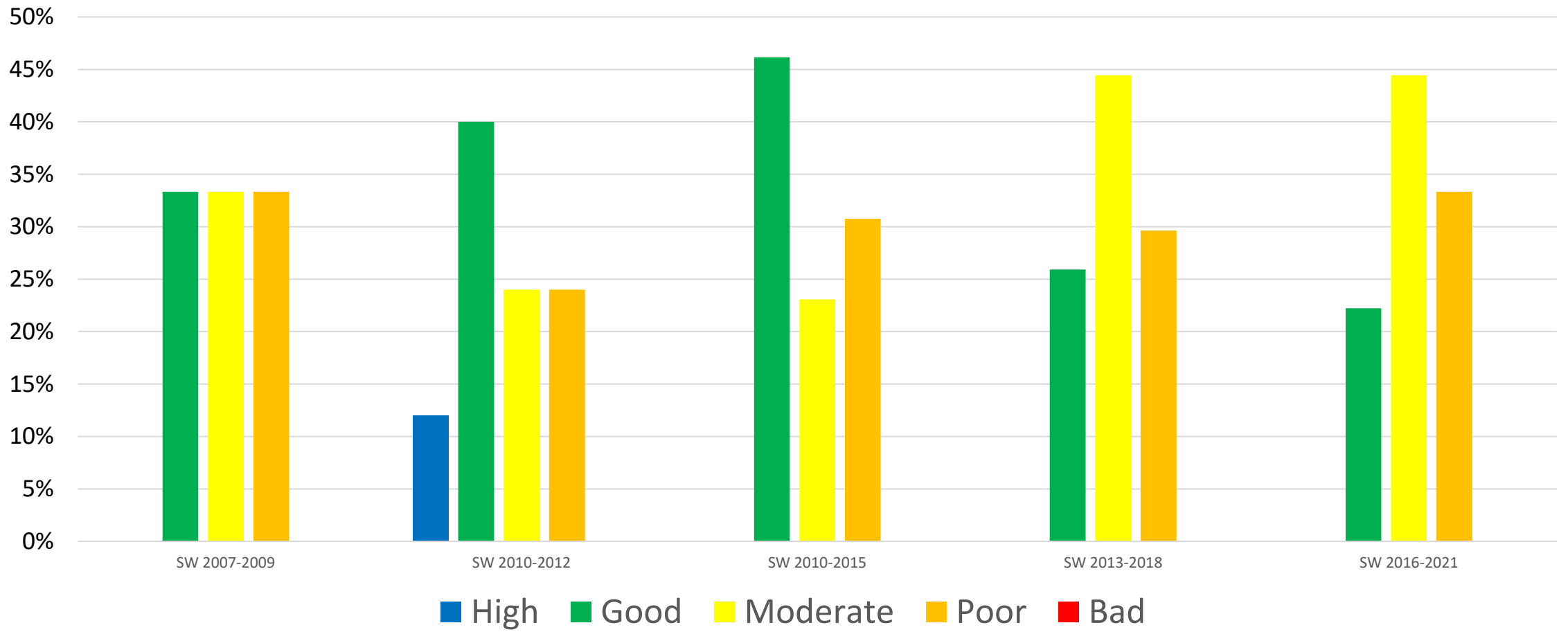
All surface waters must achieve at least Good Ecological Status by 2027

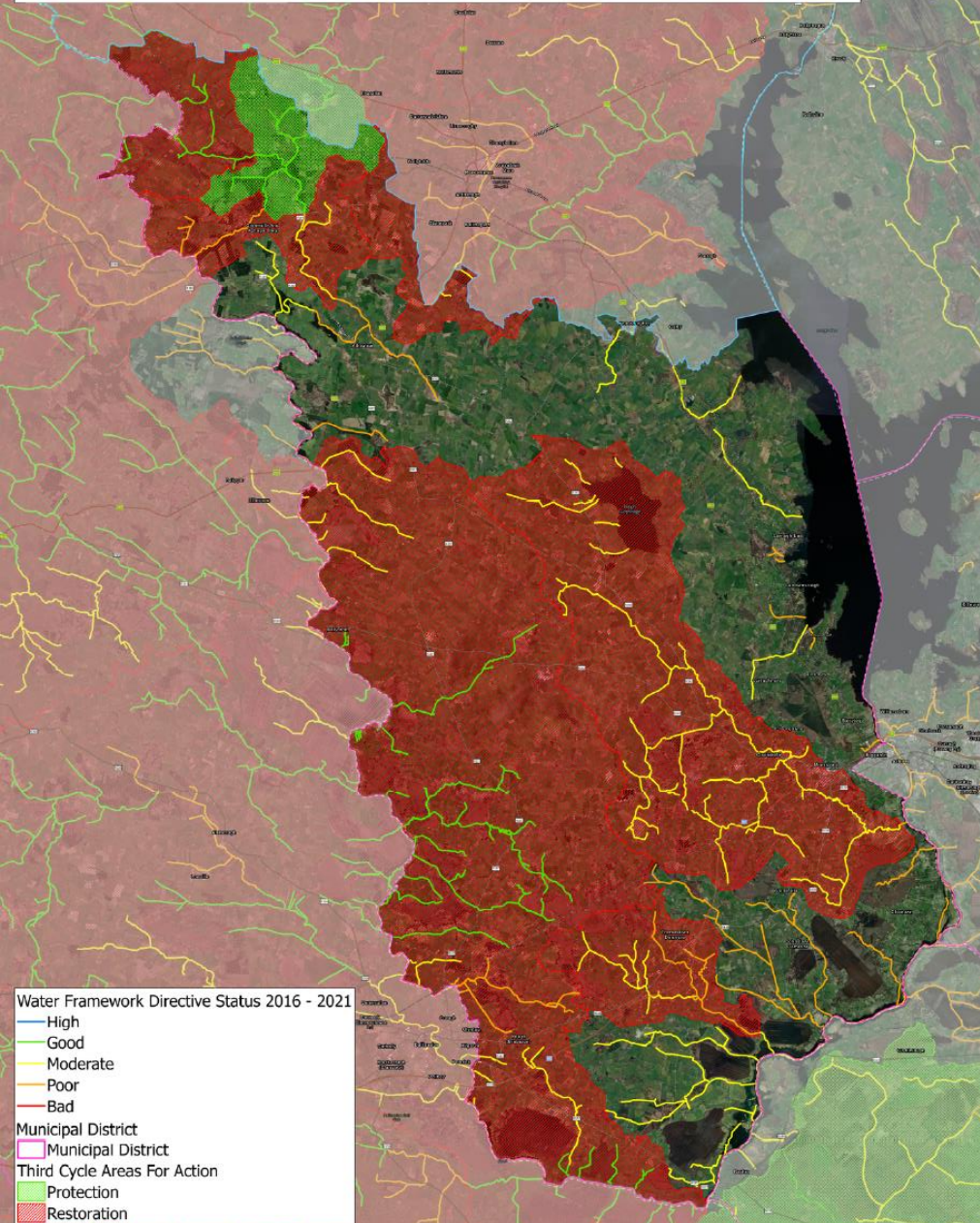
Municipal District of Athlone



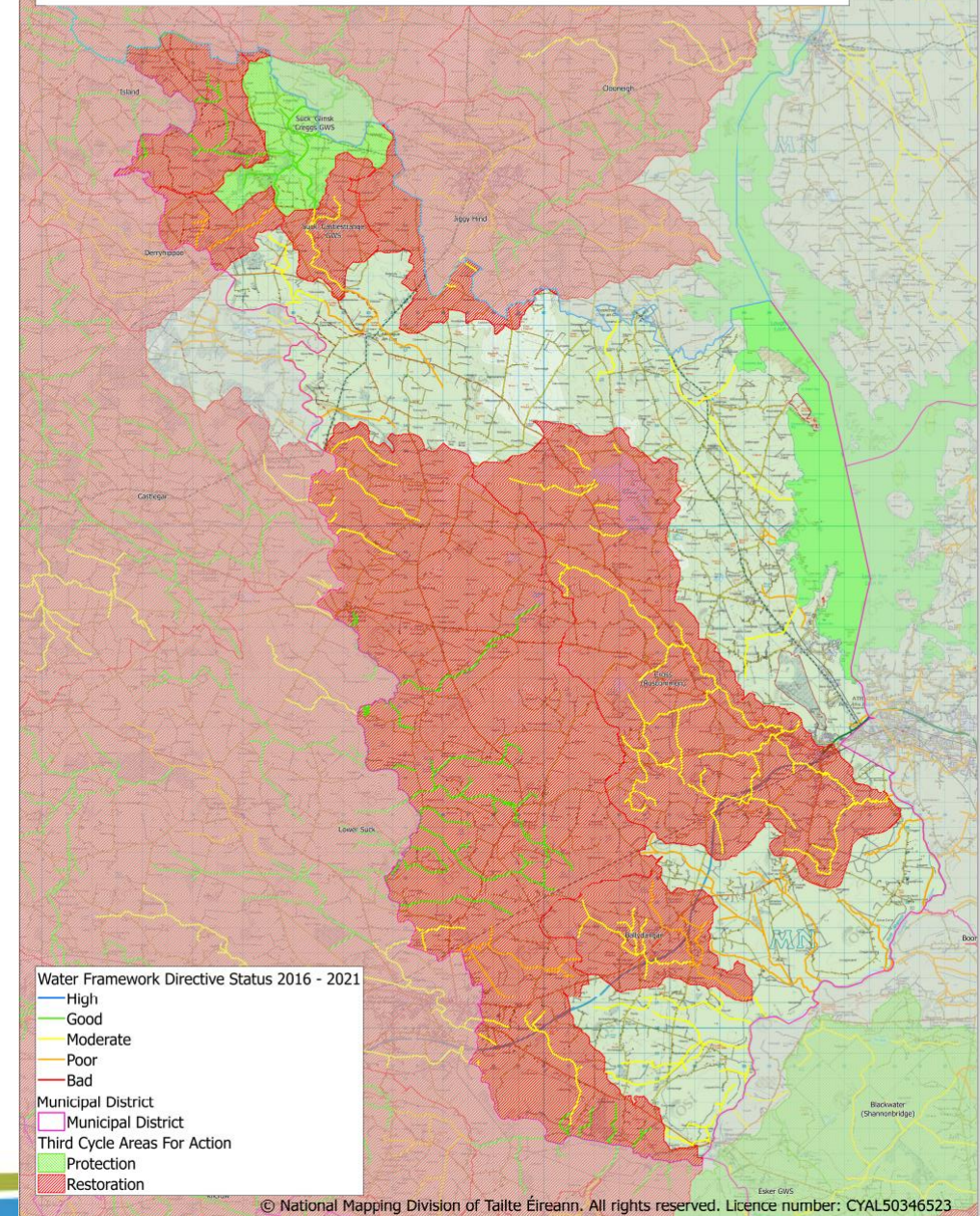
Water quality in Athlone MD

WFD Status (%) of Rivers in Municipal District of Athlone - Monitored only





Ecological Status

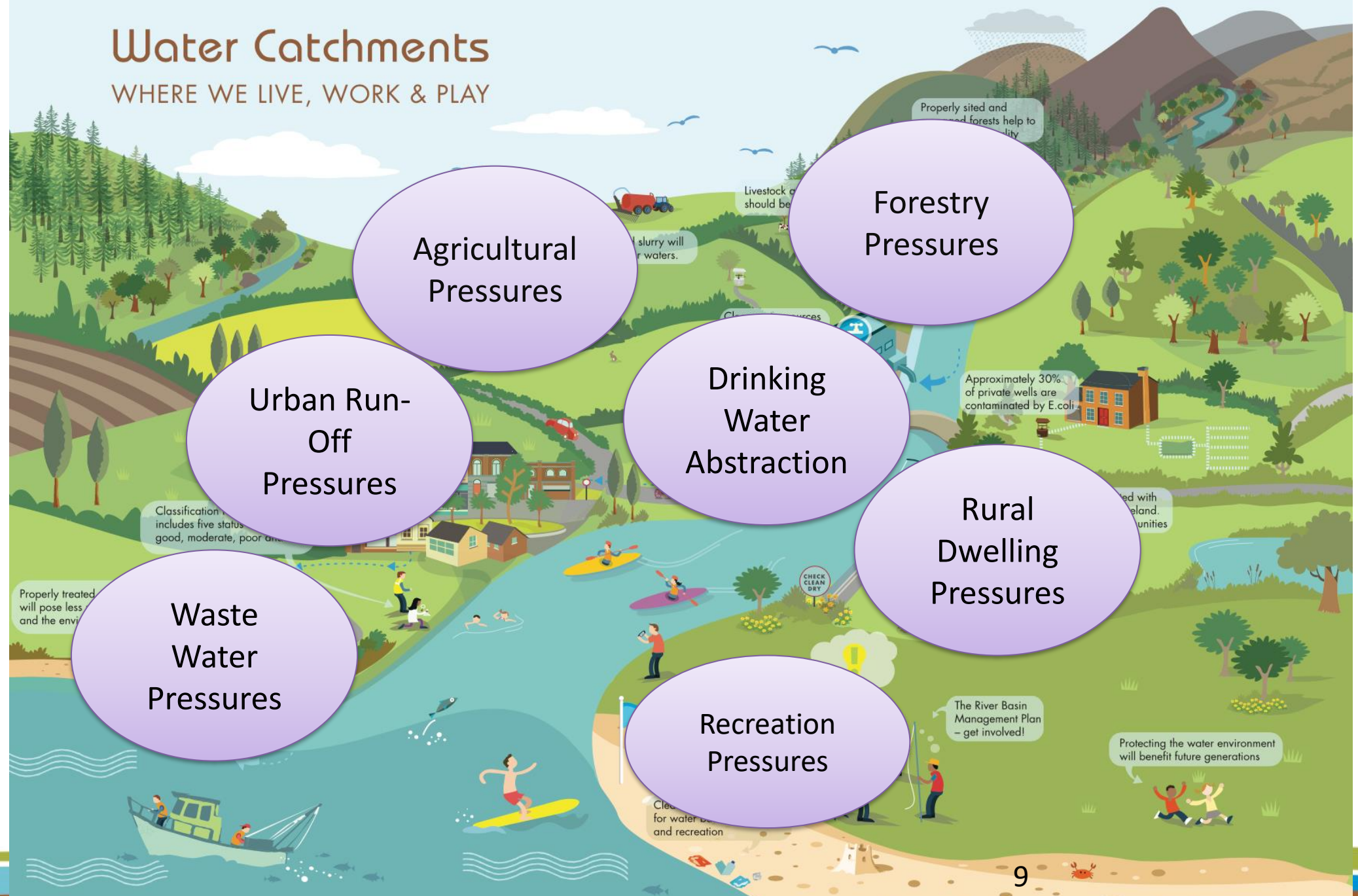


What impacts our water?



Water Catchments

WHERE WE LIVE, WORK & PLAY



Agricultural Pressures

Forestry Pressures

Urban Run-Off Pressures

Drinking Water Abstraction

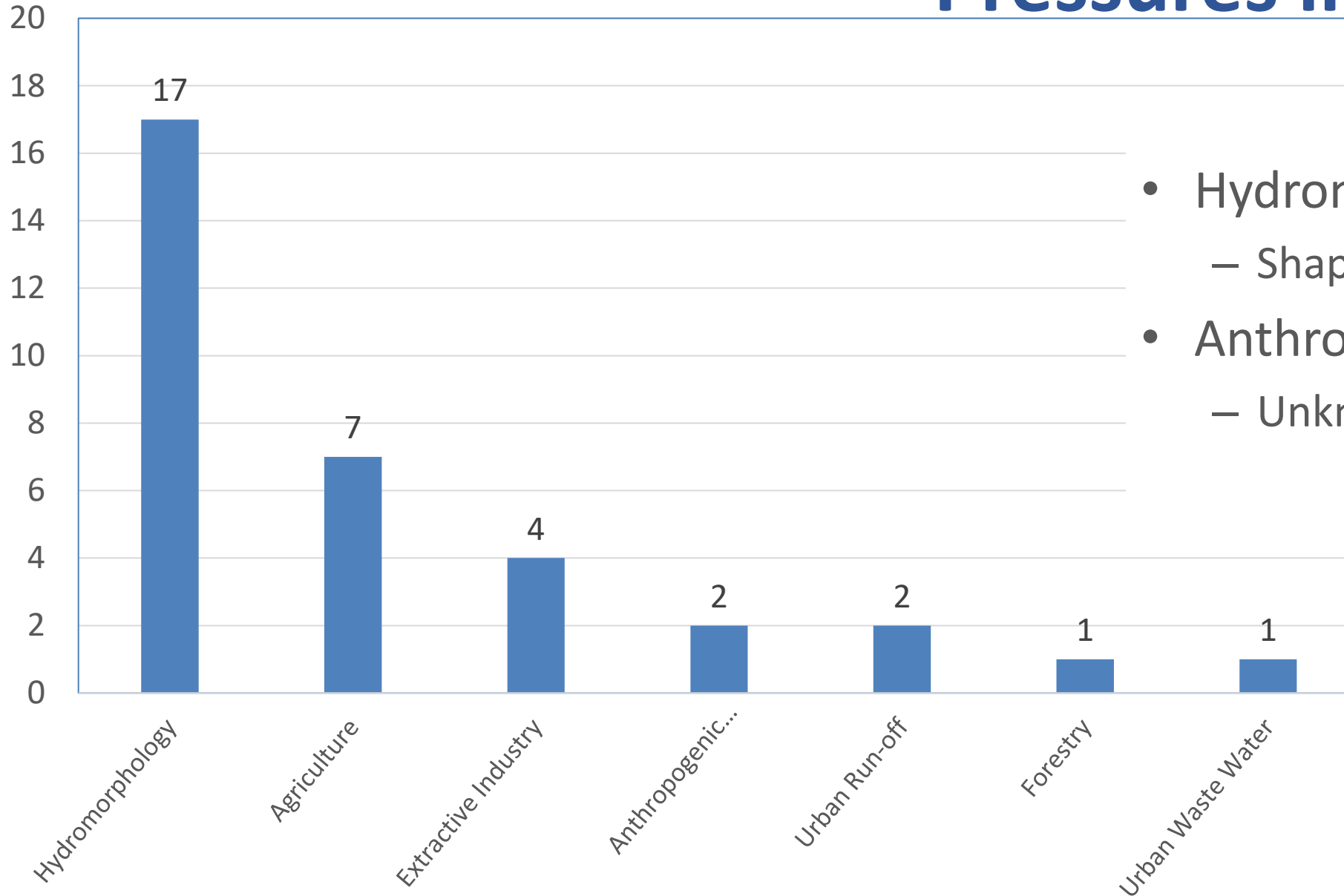
Rural Dwelling Pressures

Waste Water Pressures

Recreation Pressures

Pressures in Athlone MD

Significant Pressure in At risk waters in Municipal District of Athlone

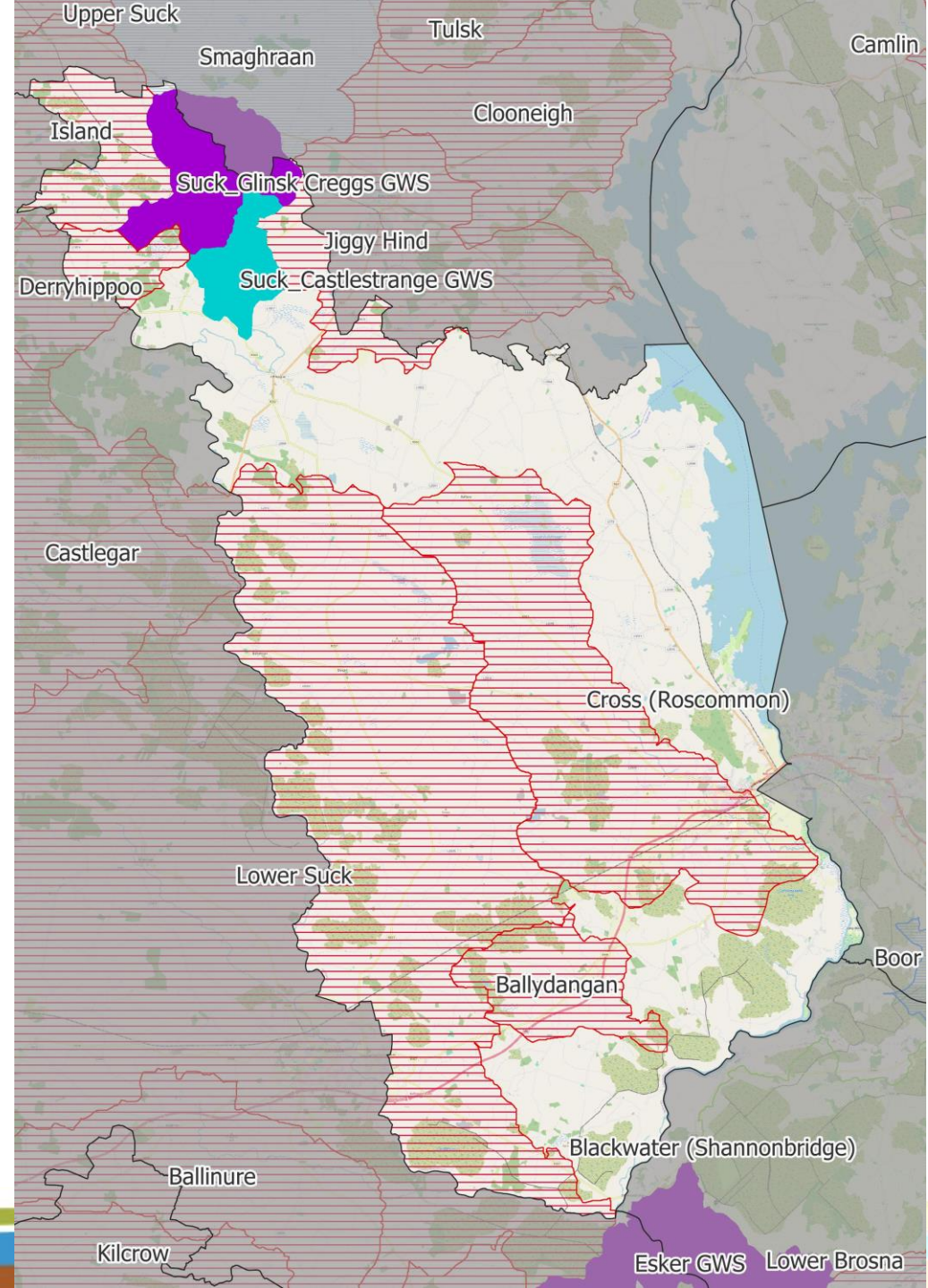


- Hydromorphology
 - Shape and flow
- Anthropogenic Pressures
 - Unknown in most cases

What are we are doing



- Areas for Action
- Detailed assessment of water quality
- 6 LAWPRO Areas for Action (large red areas)
- 1 area led by the Local Authority (Smaghraan), north of the district (Blue)
- 2 areas led by the National Federation of Group Water Schemes (north of the district Purple and Cyan)



Local Catchment Assessment

Finding issues on the ground



Field chemistry and field observations



Biological sampling - invertebrates



River walks



Chemistry sampling



Biological sampling - vegetation

Referrals

- When we find issues, we let people know
 - Hydromorphology – OPW, Local Authority, IFI
 - Agriculture, we refer to ASSAP
 - Licensed discharges, we refer to Local Authority, Environmental Protection Agency , Uisce Eireann etc.
- Measures can be used then to address the impact



What is The ASSAP?

- Agricultural Sustainability Support and Advisory Programme
- Focus is on improving water quality in Priority Areas for Action (PAA)
- Provides free & confidential farm advice and acceptance is voluntary
- Industry, government, farm orgs collaboration
- 44 Advisors - 20 Teagasc, 24 from Dairy Co-ops
- Work in collaboration with Local Authority Waters Programme (LAWPRO)
- LAWPRO – scientific investigation; LCA, desk study, chemical, biological, hydro morphology etc., assess streams
- Provide referrals to advisors to focus farm visits



CARBERY



An Roinn Tithíochta,
Rialtais Áitiúil agus Oidhreacht
Department of Housing,
Local Government and Heritage

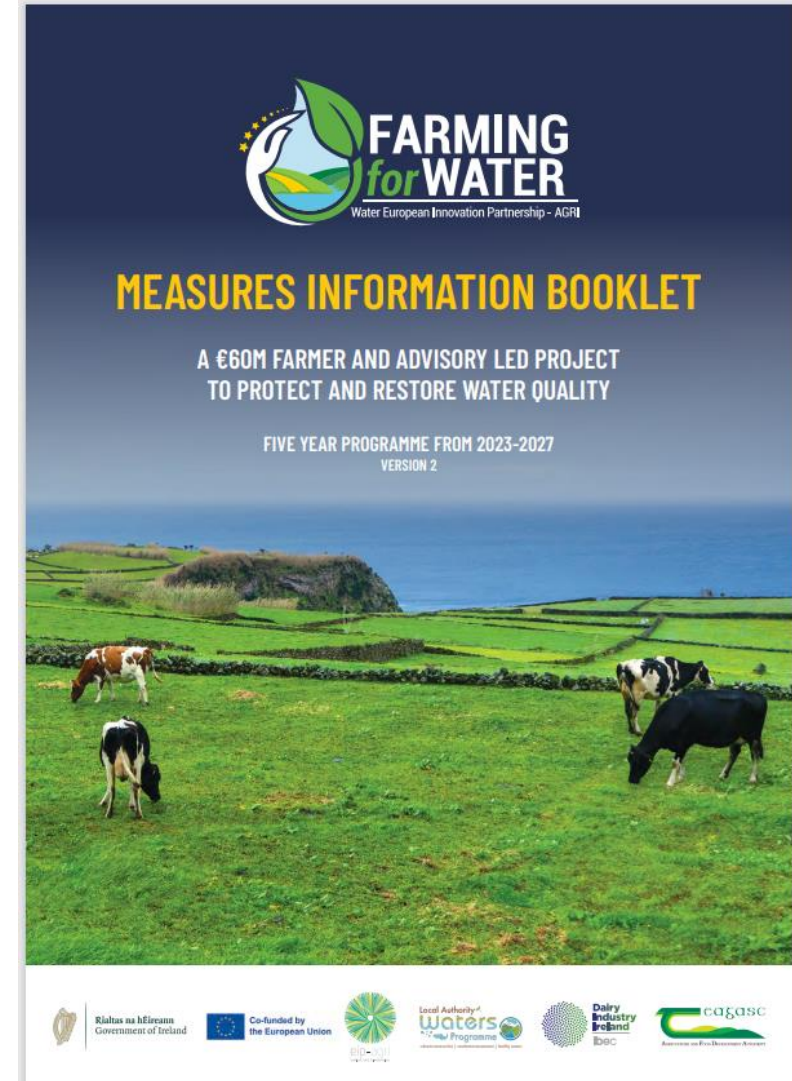


An Roinn Talmhaíochta,
Bia agus Mara
Department of Agriculture,
Food and the Marine



The Farming for Water project, aims to tackle water quality issues while promoting sustainable agricultural practices and delivering environmental benefits.

- **Collaboration & Innovation:** The project brings together farmers, researchers, policymakers, and other stakeholders to co-develop practical, scalable solutions that go beyond regulatory requirements.
- **Funding & Support:** With €50 million from DAFM and the European Commission for farmer payments and €10 million in administrative support from DHLGH, the initiative is well-funded to support on-the-ground actions.
- **Leadership & Timeline:** Led by the Local Authority Waters Programme (LAWPRO) in partnership with Teagasc and Dairy Industry Ireland, the programme launched in March 2024 and will run until 2027, engaging a wide network of collaborators including other supporting stakeholders.



Key Points

Prioritisation of Entry into the Project

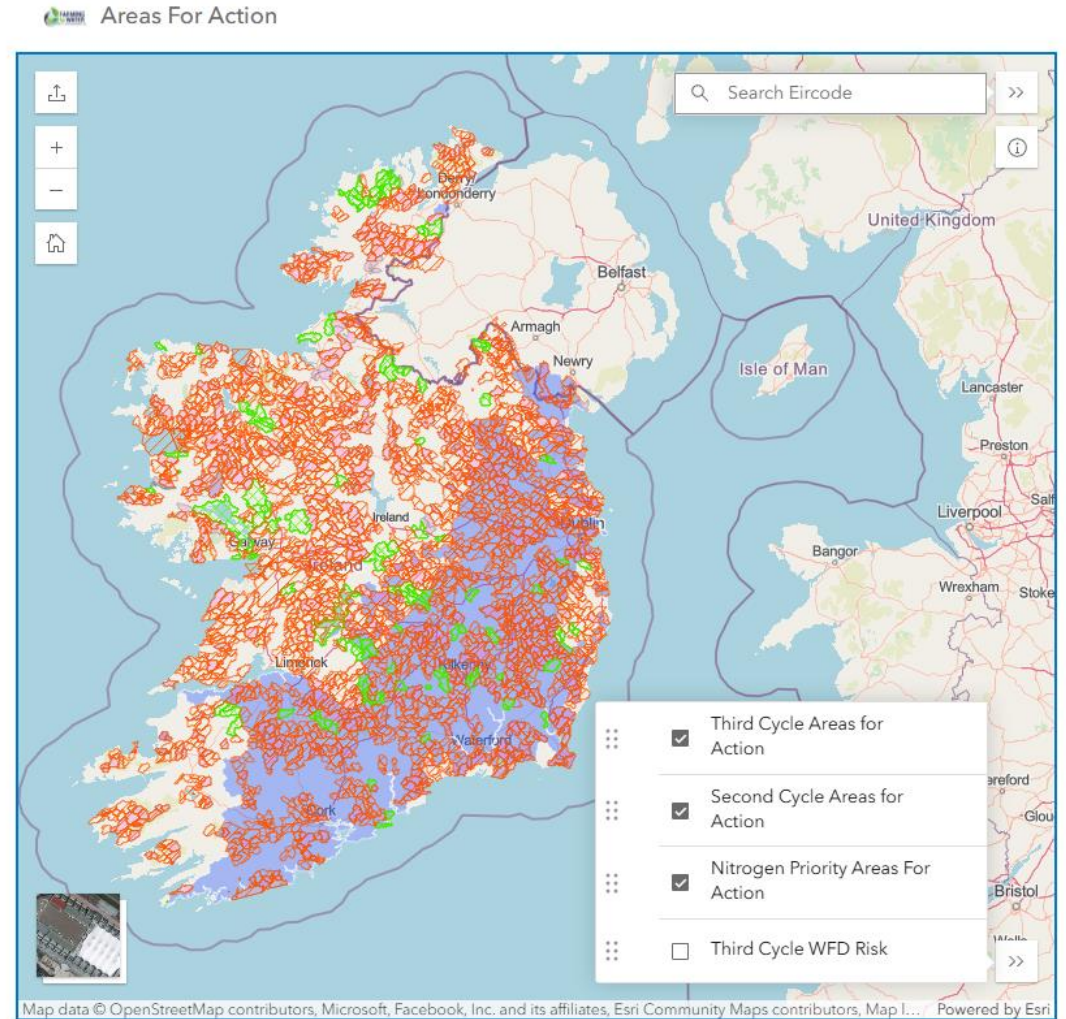
-focus on specific areas based on risk levels.

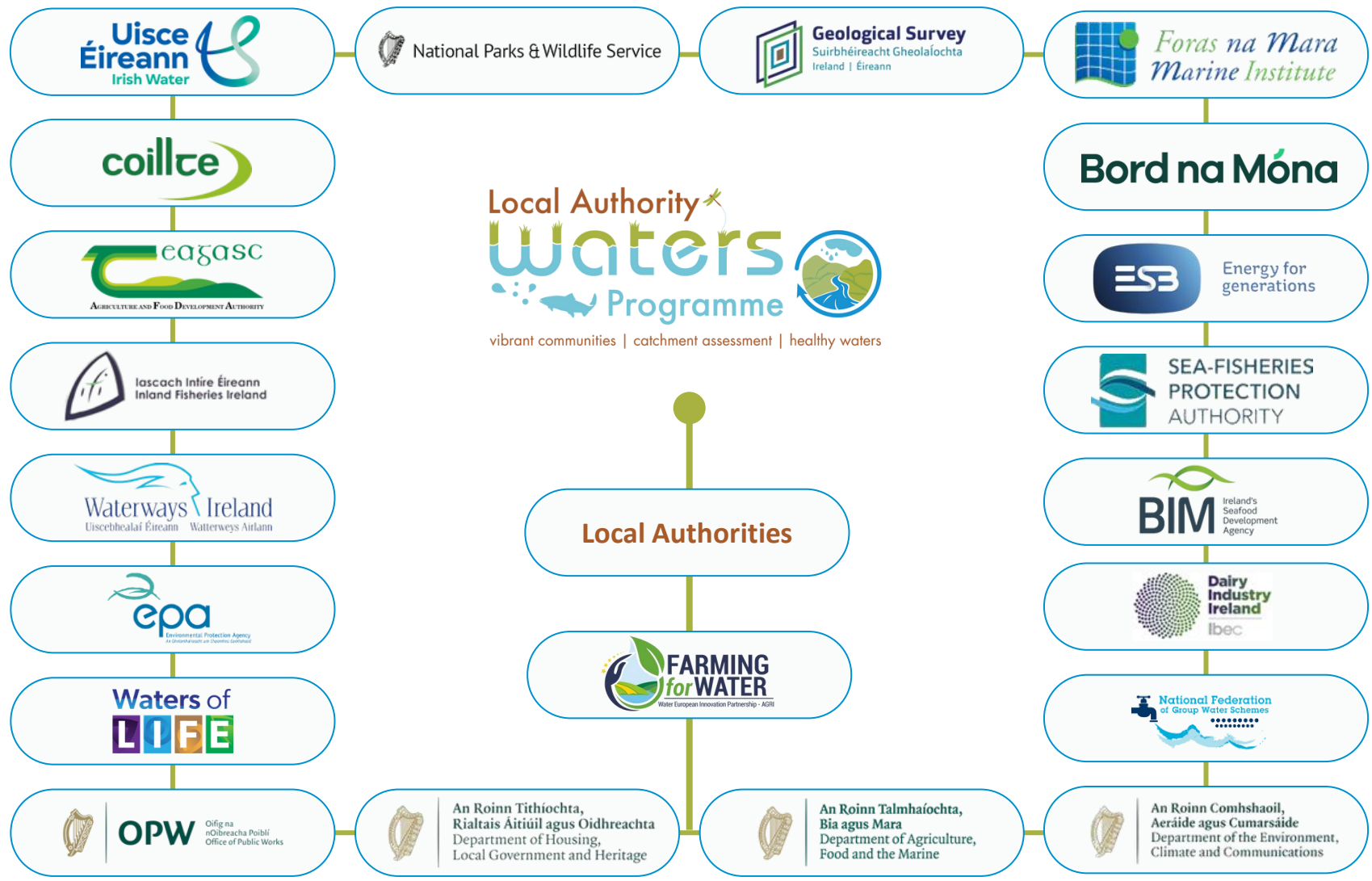
Mapped Areas for Action: Selected areas [Farming for Water website](https://farmingforwater.ie/).

Risk-Based Selection: Entry into the project is guided by the agricultural sustainability support and advisory programme and is based scientific assessments of agricultural pressures on water bodies.

Research projects being developed which will validate the measures being tested as part of the Farming for Water EIP.

<https://farmingforwater.ie/>





Community Engagement

- Janet Laffey is the Community Water Officer for Roscommon
- Our work with Communities
 - Funding Community Water Development Fund
 - Catchment Support Fund
 - Small Grants
 - Capacity Building
 - Project Delivery
 - Citizen Science Stream Index
 - Talk to Janet for more info



Collaboration is key to success



Q and A



Meet the room

- LAWPRO – Janet, Ailbhe, Cormac
- ASSAP/Farming for Water EIP – Kieran Kenny
- Roscommon County Council – Greg O' Donnell

www.lawwaters.ie

www.catchments.ie



Contact Details

- Community Water Officer
 - Janet Laffey- jlaffey@lawaters.ie
- Catchment Manager
 - Cormac Mc Conigley – cmcconigley@lawaters.ie
- ASSAP advisor for the area
 - Kieran Kenny Kieran.Kenny@teagasc.ie